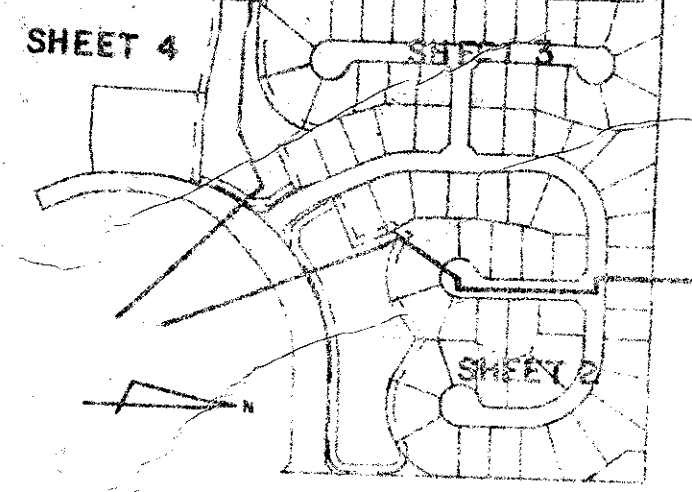


CRYSTAL POINTE PLAT ONE

PART OF CRYSTAL POINTE P.U.D.
SITUATE IN SECTION 29, TOWNSHIP 41 SOUTH, RANGE 43 EAST
PALM BEACH COUNTY, FLORIDA

SHEET 3 OF 4

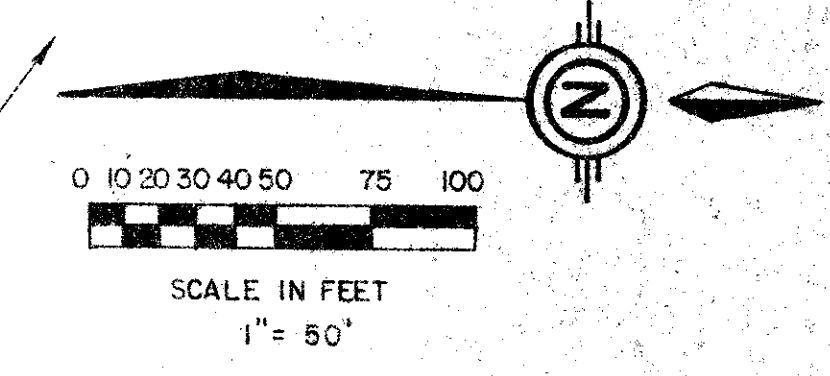
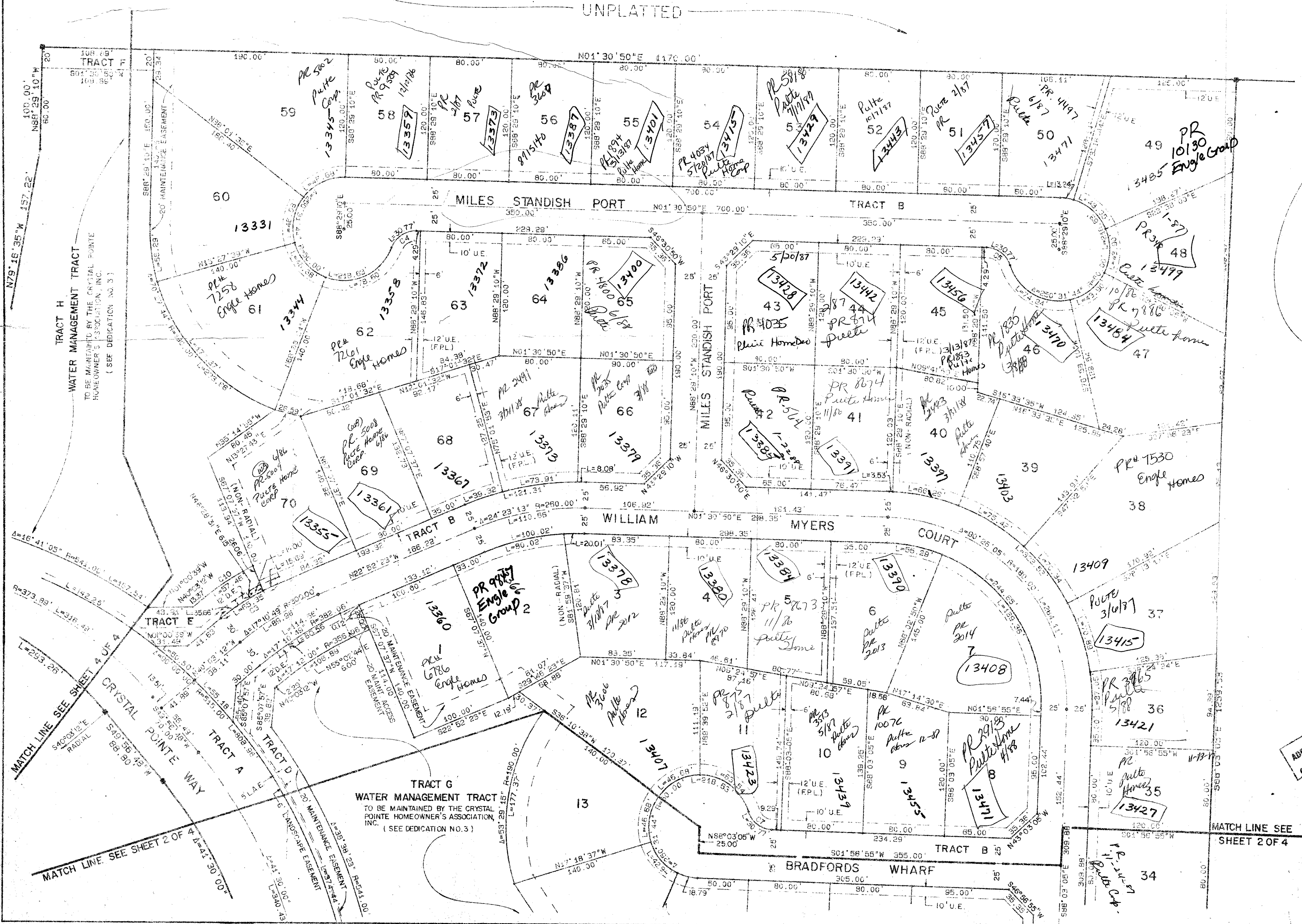


STATE OF FLORIDA
COUNTY OF PALM BEACH
THIS PLAT WAS FILED FOR RECORD _____ DAY OF _____ AD, 1986 AND DULY RECORDED IN PLAT BOOK _____ ON PAGES _____ AND _____
BY: JOHN B. DUNKLE, CLERK, D.C.

DRAWING NUMBER

DRAWING NUMBER

DRAWING NUMBER



NO.	DELTA	RADIUS	LENGTH
C1	25° 00' 00"	237.36'	103.57'
C2	15° 03' 56"	287.36'	75.56'
C3	17° 10' 45"	217.94'	65.35'
C4	70° 31' 44"	25.00'	30.77'
C5	70° 31' 44"	25.00'	30.77'
C6	73° 37' 02"	25.00'	32.12'
C7	70° 31' 44"	25.00'	30.77'
C8	90° 00' 00"	30.00'	47.12'
C9	124° 42' 57"	30.00'	65.30'
C10	13° 29' 44"	243.94'	57.46'

ADD. BY: [Signature]
CHECKED BY: [Signature]

0291-001

53
108

Meridian Surveying and Mapping Inc.
3328 SO. CONGRESS AVE. WEST PALM BEACH, FL
DRAWN: MHC/MEH DATE: JAN. 1986
CHECKED: WBH SCALE: 1" = 50'
DRAWING NO.: 85-P1-035
CRYSTAL POINTE PLAT ONE PART OF CRYSTAL POINTE P.U.D.