

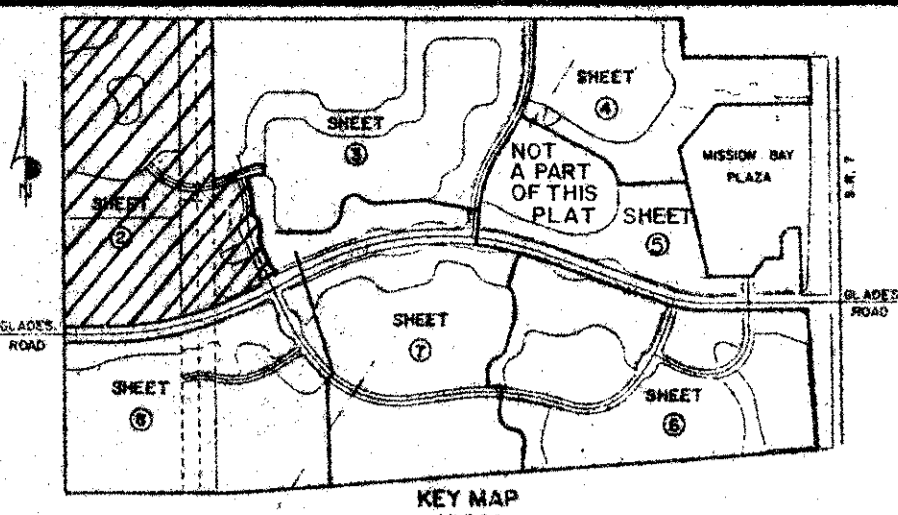
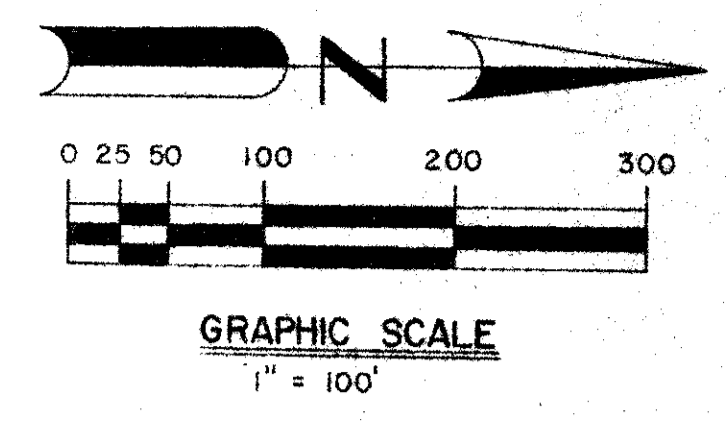
53/113

113

# MISSION BAY

A P.U.D.

IN SECTIONS 13 & 14, TOWNSHIP 47 SOUTH, RANGE 41 EAST, PALM BEACH COUNTY, FLORIDA. BEING A PORTION OF THE EAST 1/4 OF SECTION 14 AND A REPLAT OF A PORTION OF TRACTS 7, 8, 9, 10, 23, 24, 33, 34, 40, 41, 49, 50, 51, 55, 56, 57, 63, 64, AND ALL OF TRACTS 6, 11, 12, 21, 22, 25-28, 35-39, 42-48, 52-54 & 58-62 INCLUSIVE OF THE PLAT OF FLORIDA FRUIT LANDS COMPANY'S SUBDIVISION NO. 2 OF SECTION 13-47-41, AS RECORDED IN PLAT BOOK 1, PAGE 102, PALM BEACH COUNTY, FLORIDA.

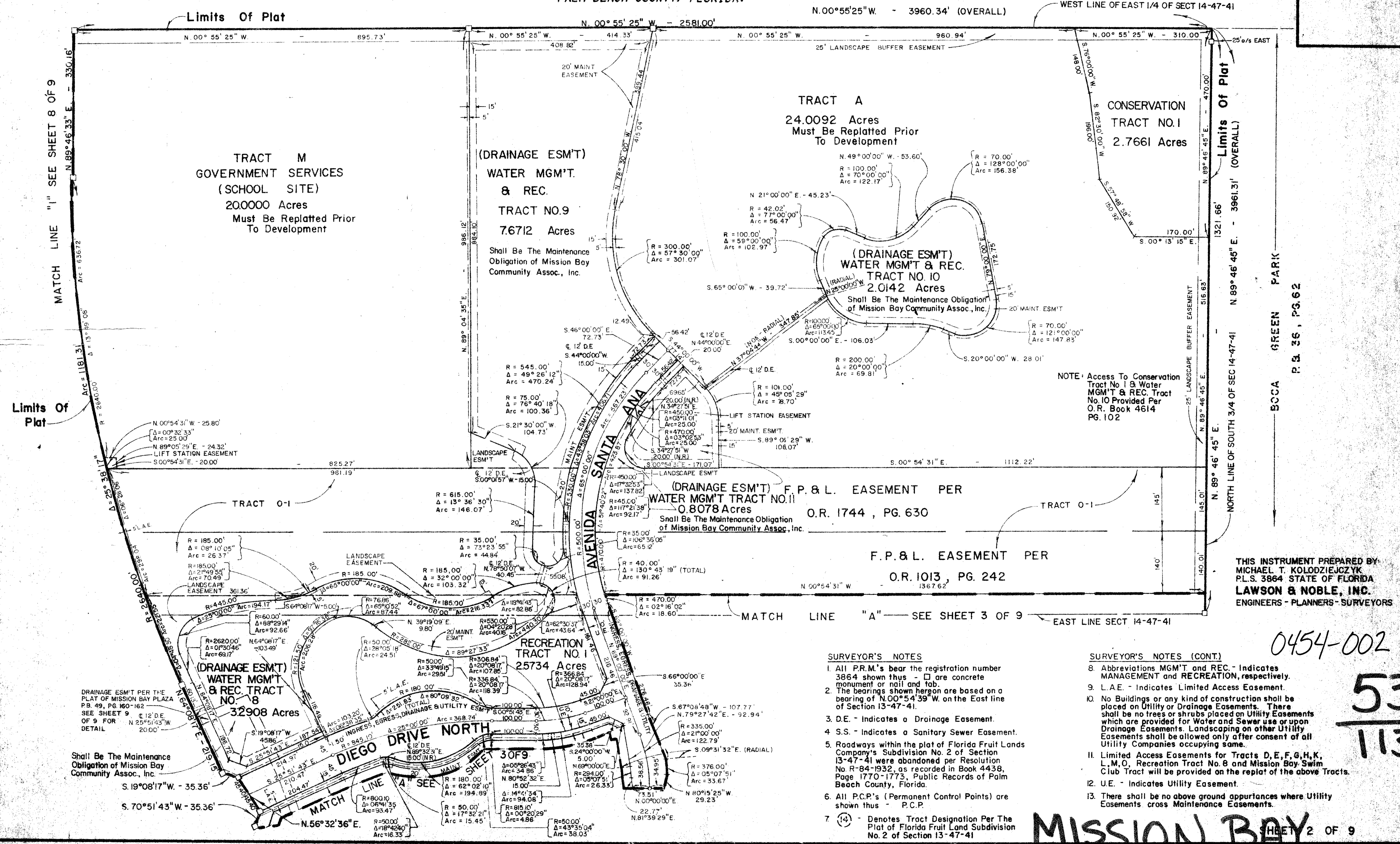


BOUNDARY PLAT  
OF ORIOLE COUNTRY  
P.B. 32, PG. 175-180

DRAWING NUMBER

DRAWING NUMBER

DRAWING NUMBER



NOTE: Access To Conservation Tract No. 1 & Water MGM'T & REC. Tract No. 10 Provided Per O.R. Book 4614 PG. 102

THIS INSTRUMENT PREPARED BY  
MICHAEL T. KOLODZIEJCZYK  
P.L.S. 3864 STATE OF FLORIDA  
LAWSON & NOBLE, INC.  
ENGINEERS - PLANNERS - SURVEYORS

- SURVEYOR'S NOTES**
- All P.R.M.'s bear the registration number 3864 shown thus - □ are concrete monument or nail and tab.
  - The bearings shown hereon are based on a bearing of N.00°54'39"W. on the East line of Section 13-47-41.
  - D.E. - Indicates a Drainage Easement.
  - S.S. - Indicates a Sanitary Sewer Easement.
  - Roadways within the plat of Florida Fruit Lands Company's Subdivision No. 2 of Section 13-47-41 were abandoned per Resolution No. R-84-1932, as recorded in Book 4438, Page 1770-1773, Public Records of Palm Beach County, Florida.
  - All P.C.P.'s (Permanent Control Points) are shown thus - P.C.P.
  - ① - Denotes Tract Designation Per The Plat of Florida Fruit Land Subdivision No. 2 of Section 13-47-41

- SURVEYOR'S NOTES (CONT.)**
- Abbreviations MGM'T and REC. - Indicates MANAGEMENT and RECREATION, respectively.
  - L.A.E. - Indicates Limited Access Easement.
  - No Buildings or any kind of construction shall be placed on Utility or Drainage Easements. There shall be no trees or shrubs placed on Utility Easements which are provided for Water and Sewer use or upon Drainage Easements. Land occupying on other Utility Easements shall be allowed only after consent of all Utility Companies occupying same.
  - Limited Access Easements for Tracts D, E, F, G, H, K, L, M, O, Recreation Tract No. 8 and Mission Bay Swim Club Tract will be provided on the replat of the above Tracts.
  - U.E. - Indicates Utility Easement.
  - There shall be no above ground appurtenances where Utility Easements cross Maintenance Easements.

0454-002

53/113

MISSION BAY SHEET 2 OF 9