

DRAWING NUMBER
53/114

MISSION BAY

A P.U.D.

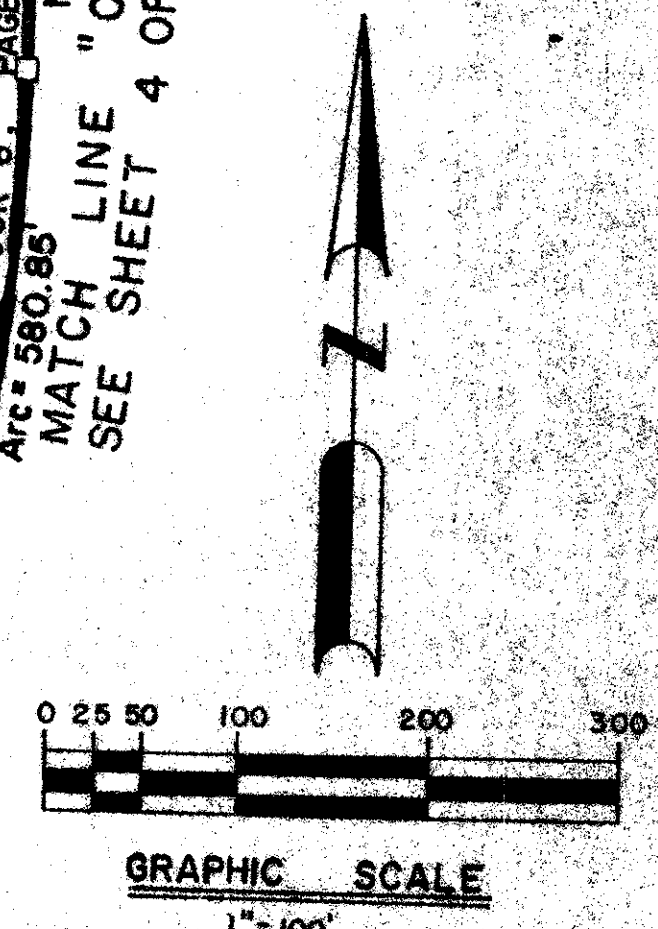
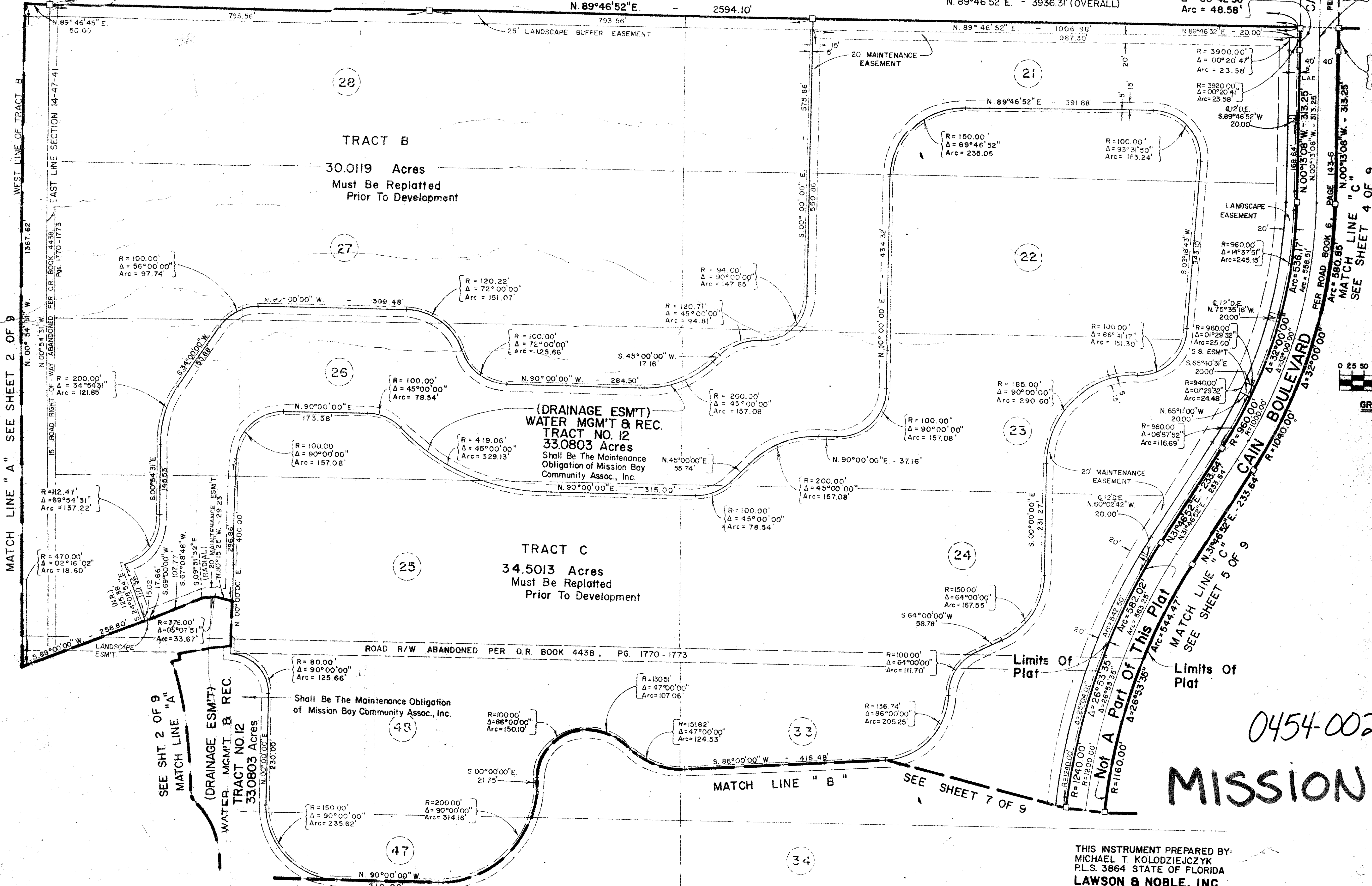
IN SECTIONS 13 & 14, TOWNSHIP 47 SOUTH, RANGE 41 EAST, PALM BEACH COUNTY, FLORIDA. BEING A PORTION OF THE EAST 1/4 OF SECTION 14 AND A REPLAT OF A PORTION OF TRACTS 7, 8, 9, 10, 23, 24, 33, 34, 40, 41, 49, 50, 51, 55, 56, 57, 63, 64, AND ALL OF TRACTS 6, 11, 12, 21, 22, 25-28, 35-39, 42-48, 52-54 & 58-62 INCLUSIVE OF THE PLAT OF FLORIDA FRUIT LANDS COMPANY'S SUBDIVISION NO. 2 OF SECTION 13-47-41, AS RECORDED IN PLAT BOOK 1, PAGE 102, PALM BEACH COUNTY, FLORIDA.

114

FLORIDA FRUIT LANDS COMPANY'S SUBDIVISION NO. 2
P.B. 1, Pg. 102

FLORIDA FRUIT LANDS COMPANY'S SUBDIVISION NO. 2
P.B. 1, Pg. 102

Limits Of Plot



53
114
0454-002
MISSION BAY

THIS INSTRUMENT PREPARED BY:
MICHAEL T. KOLODZIEJCZYK
P.L.S. 3864 STATE OF FLORIDA
LAWSON & NOBLE, INC.
ENGINEERS - PLANNERS - SURVEYORS

DRAWING NUMBER
PLAN HOLD CORPORATION • IRVINE, CALIFORNIA
RECORD BY NUMBER 02548