

53/128

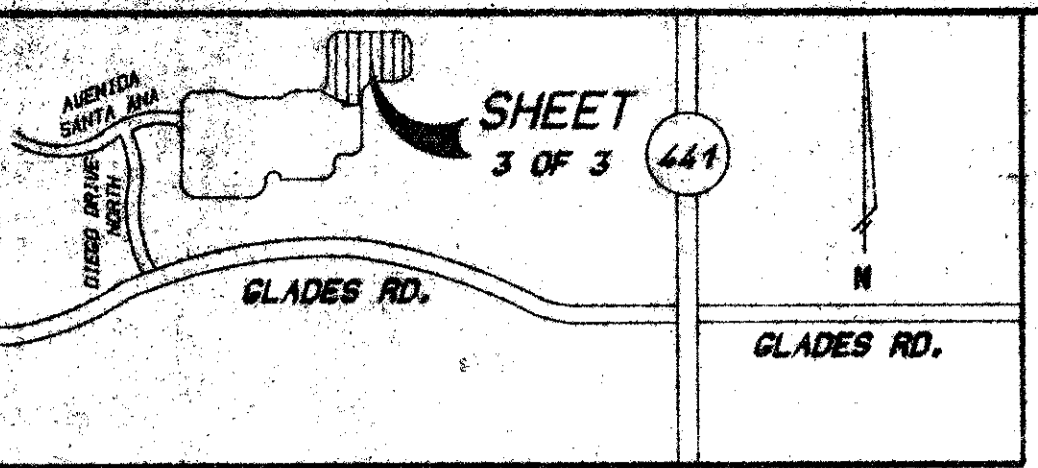
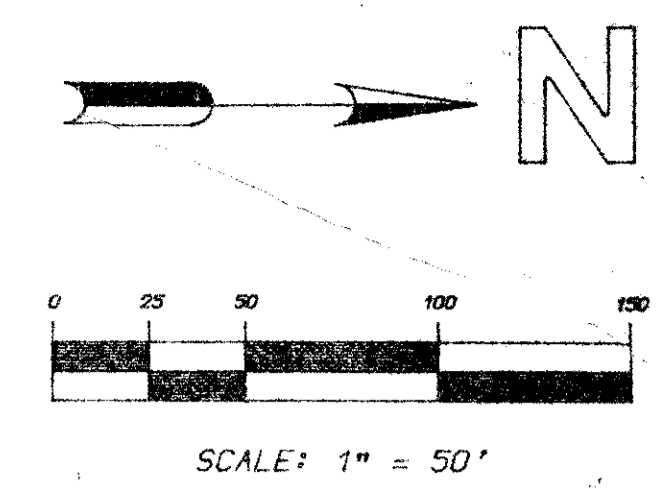
TRACT C

128

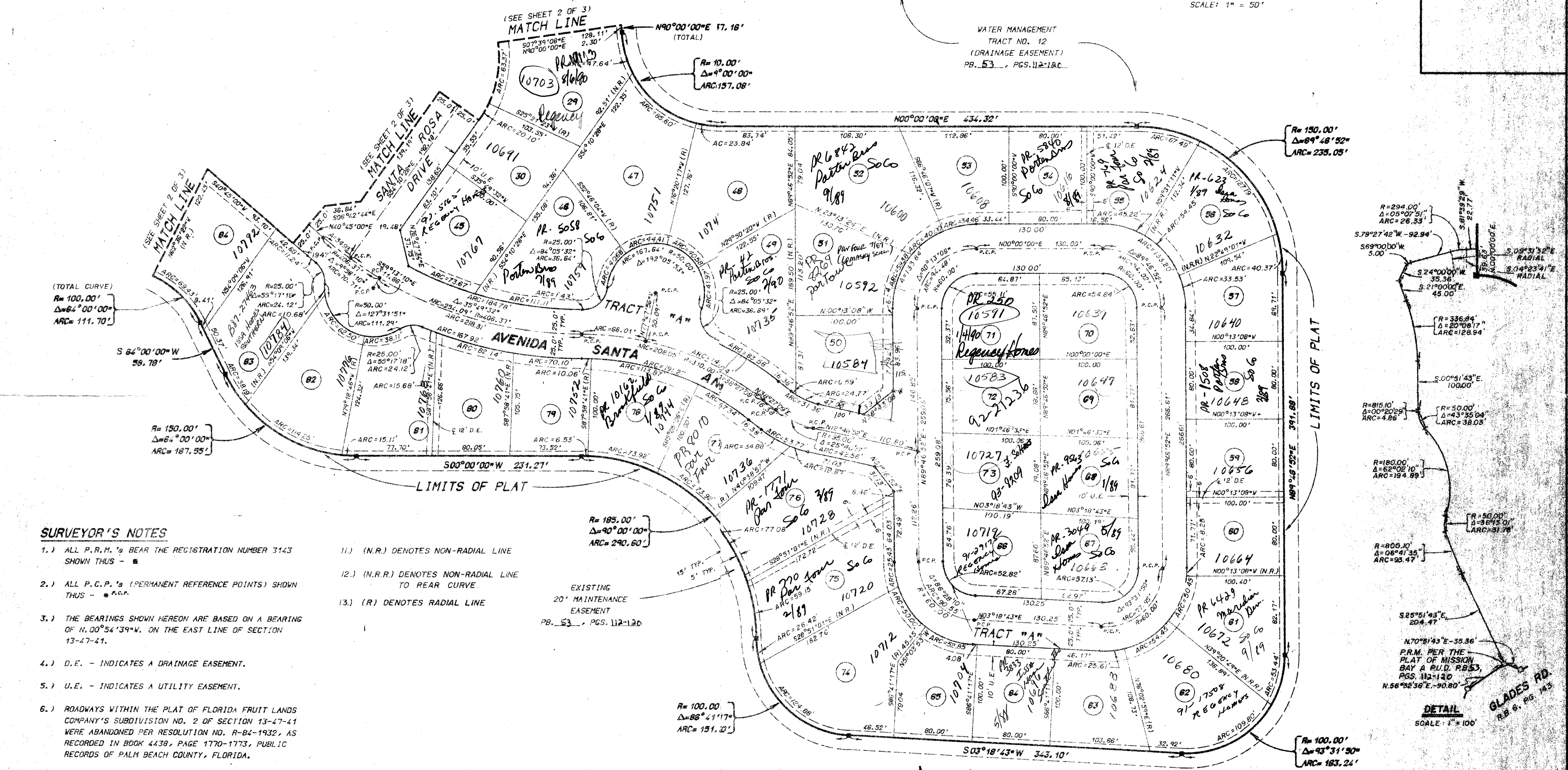
A REPLAT OF ALL OF TRACT C OF THE PLAT OF MISSION BAY A P.U.D., AS RECORDED IN PLAT BOOK 53, PAGES 112 - 120, OF THE PUBLIC RECORDS OF PALM BEACH COUNTY, FLORIDA

SECTION 13, TOWNSHIP 4 SOUTH, RANGE 41 EAST

SHEET 3 OF 3 JANUARY, 1986



KEY MAP
N.T.S.



SURVEYOR'S NOTES

- 1.) ALL P.R.M.'s BEAR THE REGISTRATION NUMBER 3143 SHOWN THUS - ■
- 2.) ALL P.C.P.'s (PERMANENT REFERENCE POINTS) SHOWN THUS - ● P.C.P.
- 3.) THE BEARINGS SHOWN HEREON ARE BASED ON A BEARING OF N.00°54'39"W. ON THE EAST LINE OF SECTION 13-47-41.
- 4.) D.E. - INDICATES A DRAINAGE EASEMENT.
- 5.) U.E. - INDICATES A UTILITY EASEMENT.
- 6.) ROADWAYS WITHIN THE PLAT OF FLORIDA FRUIT LANDS COMPANY'S SUBDIVISION NO. 2 OF SECTION 13-47-41 WERE ABANDONED PER RESOLUTION NO. R-84-1932, AS RECORDED IN BOOK 4438, PAGE 1770-1773, PUBLIC RECORDS OF PALM BEACH COUNTY, FLORIDA.
- 7.) NO BUILDINGS OR ANY KIND OF CONSTRUCTION SHALL BE PLACED ON UTILITY OR DRAINAGE EASEMENTS.
- 8.) THERE SHALL BE NO TREES OR SHRUBS PLACED ON UTILITY EASEMENTS WHICH ARE PROVIDED FOR WATER AND AND SEWER USE OR UPON DRAINAGE EASEMENTS.
- 9.) LANDSCAPING ON OTHER UTILITY EASEMENTS SHALL BE ALLOWED ONLY AFTER CONSENT OF ALL UTILITY COMPANIES OCCUPYING SAME.
- 10.) WHERE UTILITY AND DRAINAGE EASEMENTS INTERSECT, DRAINAGE EASEMENTS SHALL TAKE PRECEDENCE.

- 11.) (N.R.) DENOTES NON-RADIAL LINE
- 12.) (N.R.R.) DENOTES NON-RADIAL LINE TO REAR CURVE.
- 13.) (R) DENOTES RADIAL LINE

EXISTING
20' MAINTENANCE
EASEMENT
PB. 53, PGS. 112-120

THIS INSTRUMENT PREPARED BY:
LEO E. NOBLE 3143 STATE OF FLORIDA
LAWSON & NOBLE, INC.
ENGINEERS - PLANNERS - SURVEYORS
LAKE WORTH, FLORIDA

WATER MANAGEMENT
TRACT No. 12
(DRAINAGE EASEMENT)
P.B. 53, PGS. 112-120

ADD. BY
CHECKED BY
0454-302

53
128

MISSION BAY