

DRAWING NUMBER
53/147

THE POLO CLUB OPEN SPACE PLAT TWO

SITUATE IN SECTION 35, TOWNSHIP 46 SOUTH, RANGE 42 EAST
PALM BEACH COUNTY, FLORIDA.

BEING A REPLAT OF A PORTION OF "THE POLO CLUB PLAT I", A P.U.D., AS RECORDED
IN PLAT BOOK 52, PAGES 35 & 36

FEBRUARY, 1986

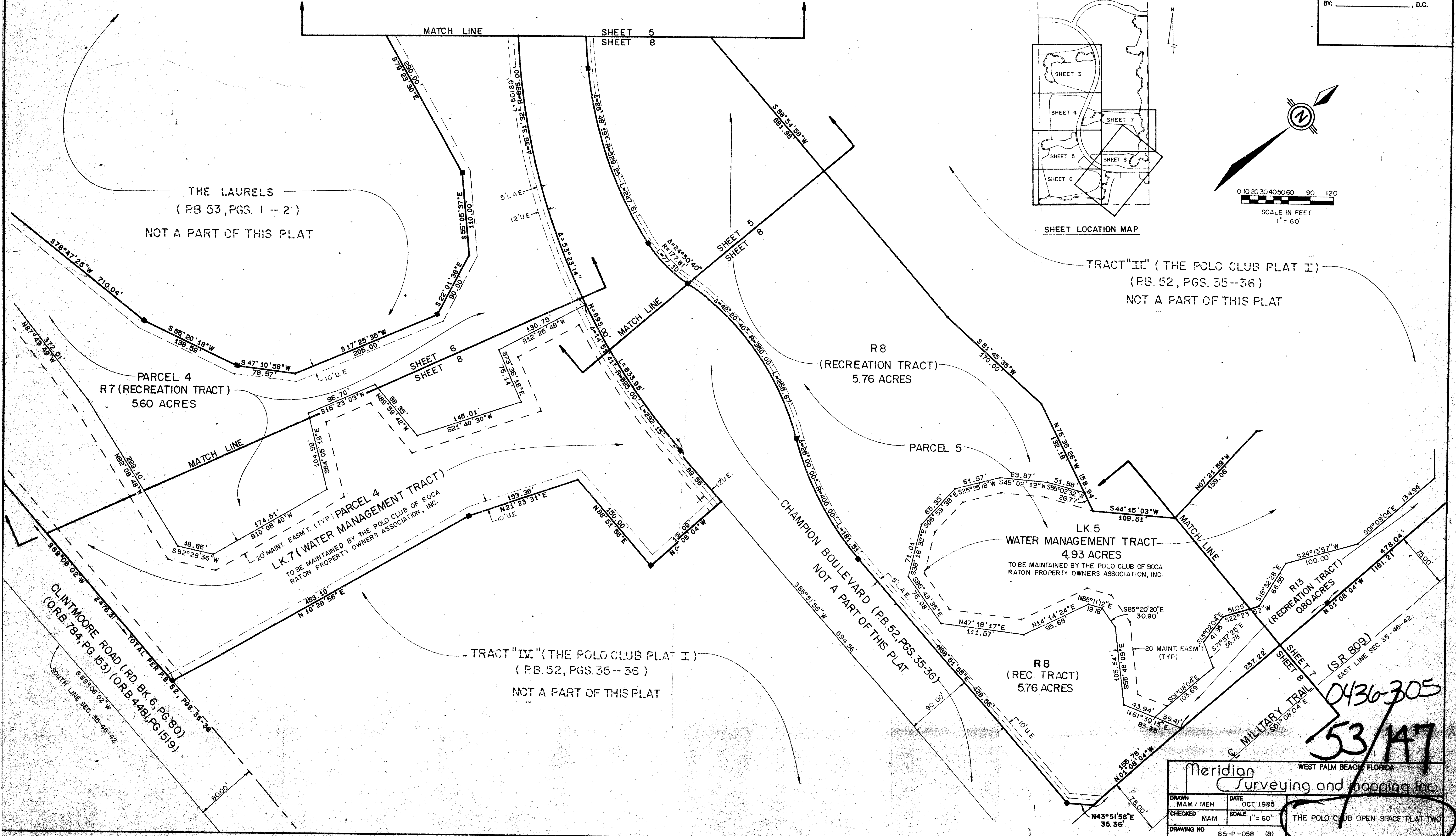
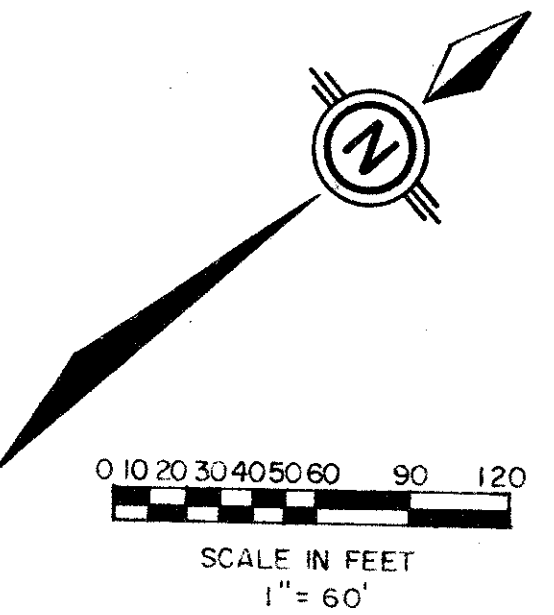
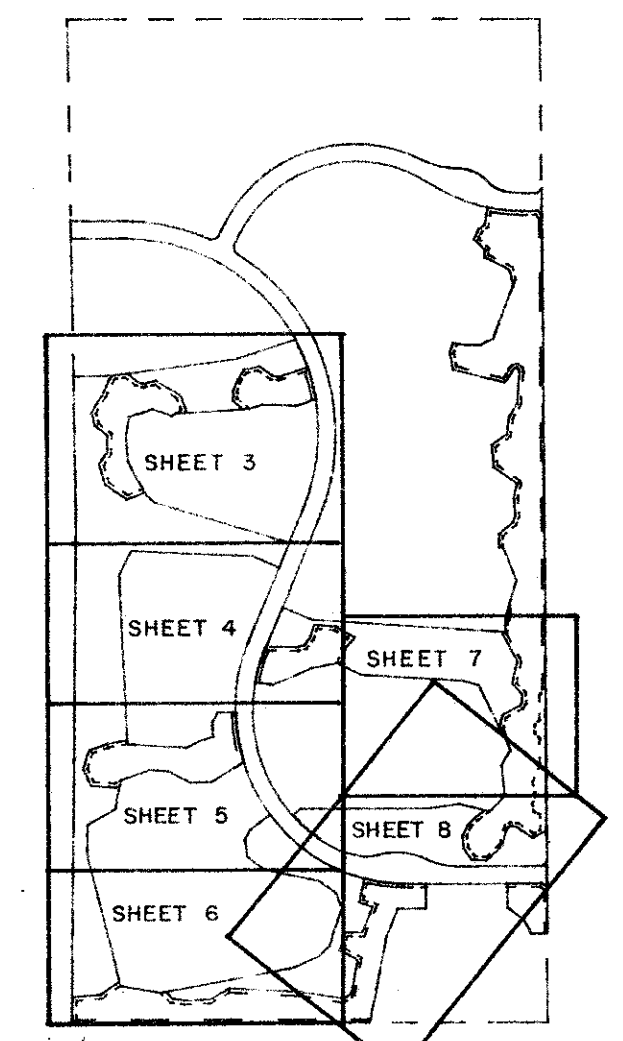
SHEET 8 OF 8

147

STATE OF FLORIDA
COUNTY OF PALM BEACH

THIS PLAT WAS FILED FOR
RECORD AT _____
THIS _____ DAY OF _____
AD, 1985 AND DULY RECORDED
IN PLAT BOOK _____ ON PAGES
_____ AND _____

JOHN B. DUNKLE, CLERK
BY: _____, D.C.



Meridian Surveying and Mapping Inc. WEST PALM BEACH, FLORIDA

DRAWN	MAM / MEH	DATE	OCT 1985
CHECKED	MAM	SCALE	1" = 60'
DRAWING NO	85-P-058 (8)		

THE POLO CLUB OPEN SPACE PLAT TWO

0436-305
53/147

DRAWING NUMBER

DRAWING NUMBER

DRAWING NUMBER

PLAN HOLD CORPORATION • IRVINE, CALIFORNIA
RECORDED BY NUMBER 07545