

53/152

A PLANNED UNIT DEVELOPMENT GOLDEN LAKES VILLAGE SECTION FOURTEEN

IN SECTIONS 29 & 32, TOWNSHIP 43 SOUTH, RANGE 42 EAST
BEING A REPLAT OF A PORTION OF TRACTS 9, 10, 11, 12, & 18,
BLOCK 3, PALM BEACH FARMS COMPANY PLAT NO. 3
(PLAT BOOK 2, PAGES 45 - 54)
PALM BEACH COUNTY, FLORIDA

SHEET 2 OF 2

SEPTEMBER, 1985

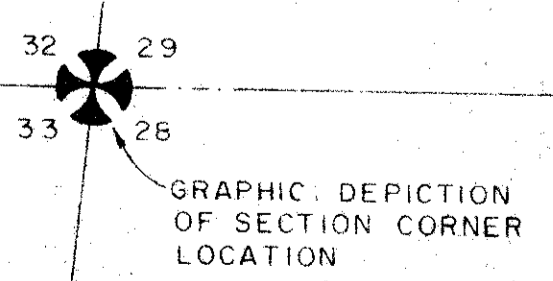
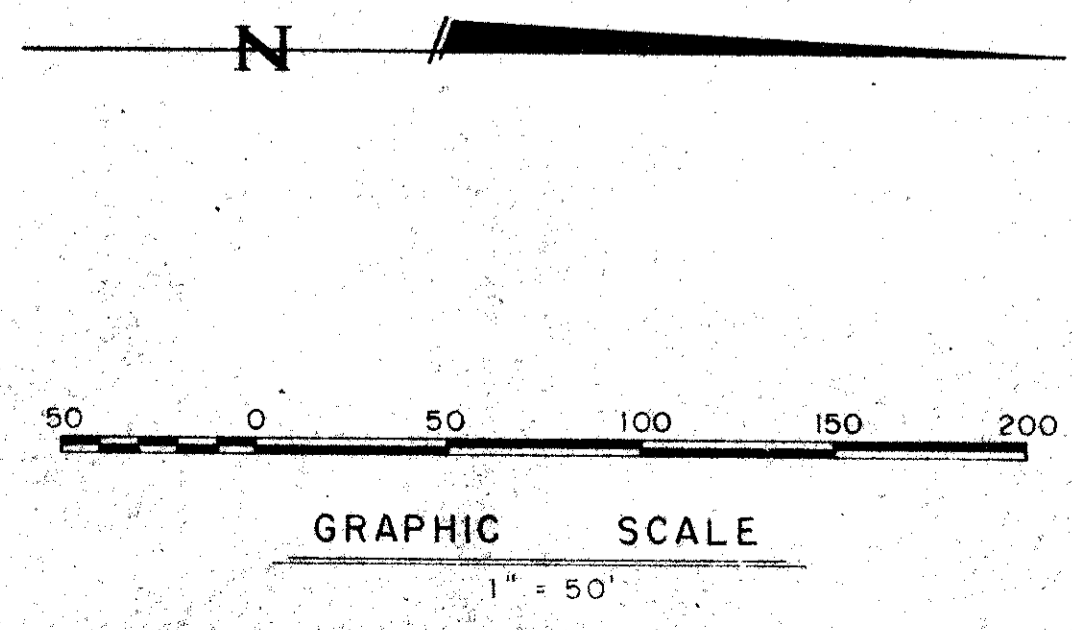
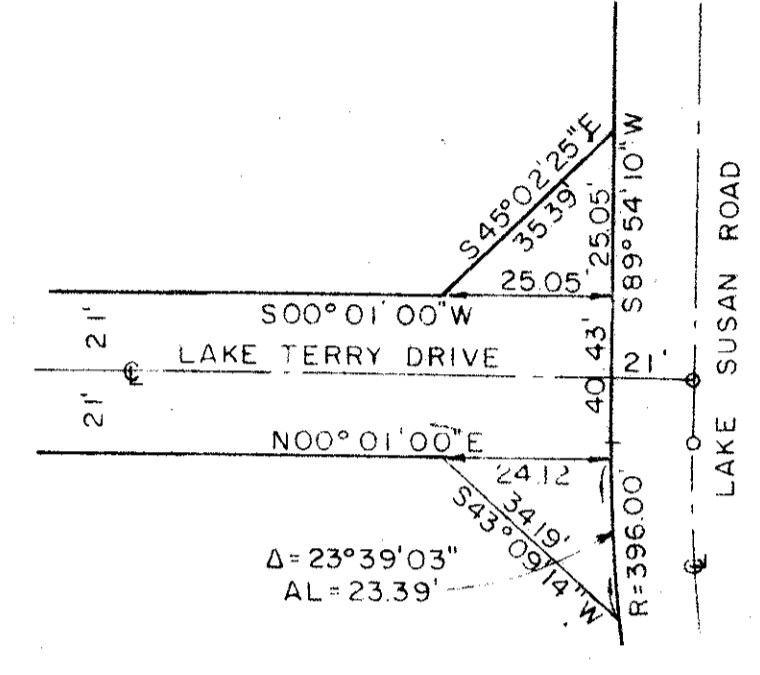
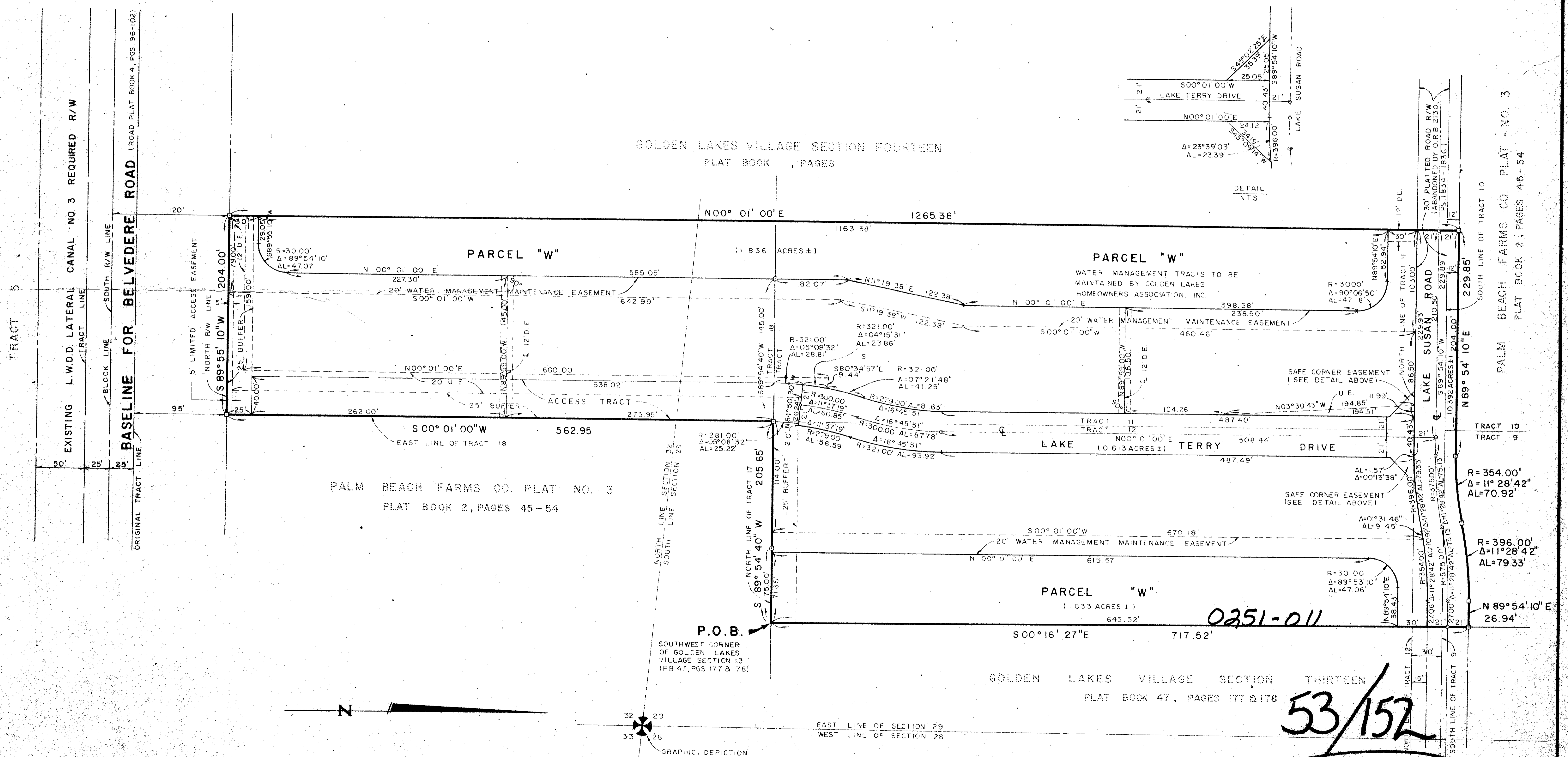
152

COUNTY OF PALM BEACH
STATE OF FLORIDA]
This Plat was filed for record at M
this day of
19 and duly recorded in Plat Book No
..... on page
JOHN B. DUNKLE, Clerk, Circuit Court
By D.C.

DRAWING NUMBER

DRAWING NUMBER

DRAWING NUMBER



Field Book No. Pg.	ROBERT E. OWEN & ASSOCIATES, INC.	Job No. 85-1005
Design	ENGINEERS - PLANNERS - SURVEYORS	Scale AS SHOWN
Drawn L. C. BISPOTT	WEST PALM BEACH FLORIDA	Date SEPT. 1985
Checked		Sheet 2
		of 2
		File No. BF-2319-H

53/152
GOLDEN LAKES VILLAGE
SECTION FOURTEEN
A PLANNED UNIT DEVELOPMENT