

RAWING NUMBER
53/154

A PLANNED UNIT DEVELOPMENT

GOLDEN LAKES VILLAGE SECTION FIFTEEN

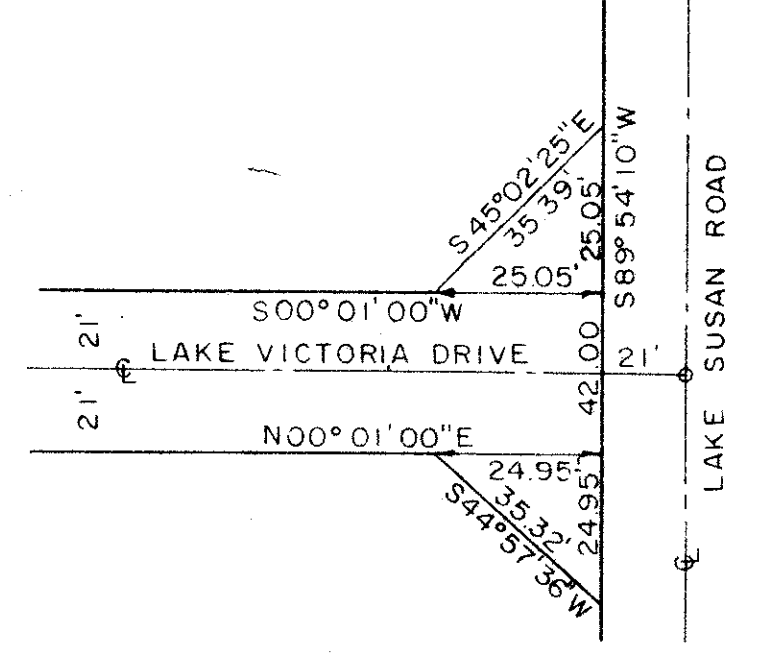
IN SECTIONS 29 & 32, TOWNSHIP 43 SOUTH, RANGE 42 EAST
 BEING A REPLAT OF A PORTION OF TRACTS 10, 11 & 18,
 BLOCK 3, PALM BEACH FARMS COMPANY PLAT NO. 3
 (PLAT BOOK 2, PAGES 45 - 54)
 PALM BEACH COUNTY, FLORIDA

SHEET 2 OF 2

SEPTEMBER, 1985

154

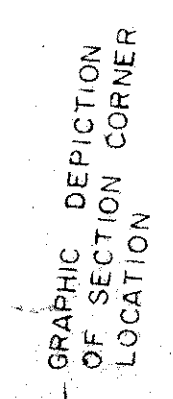
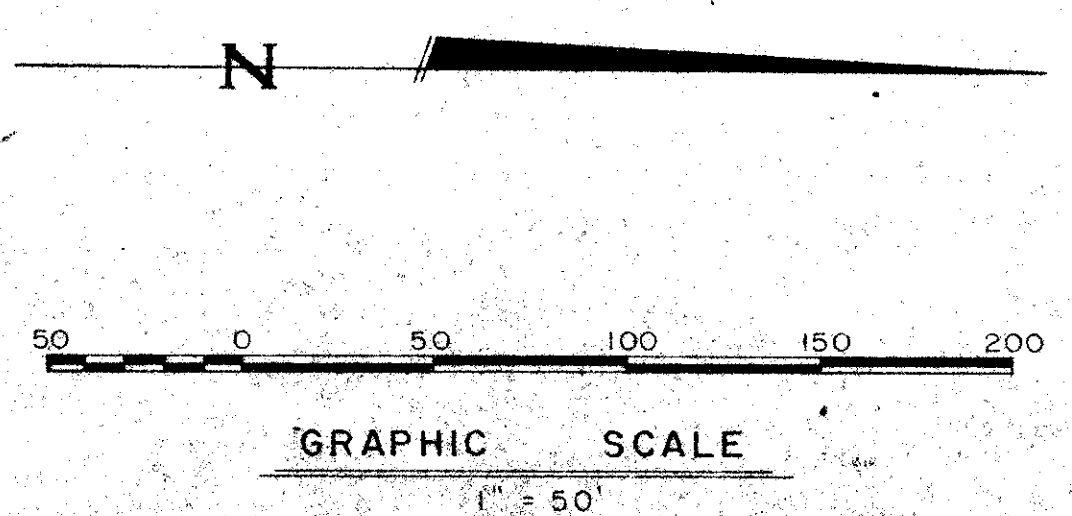
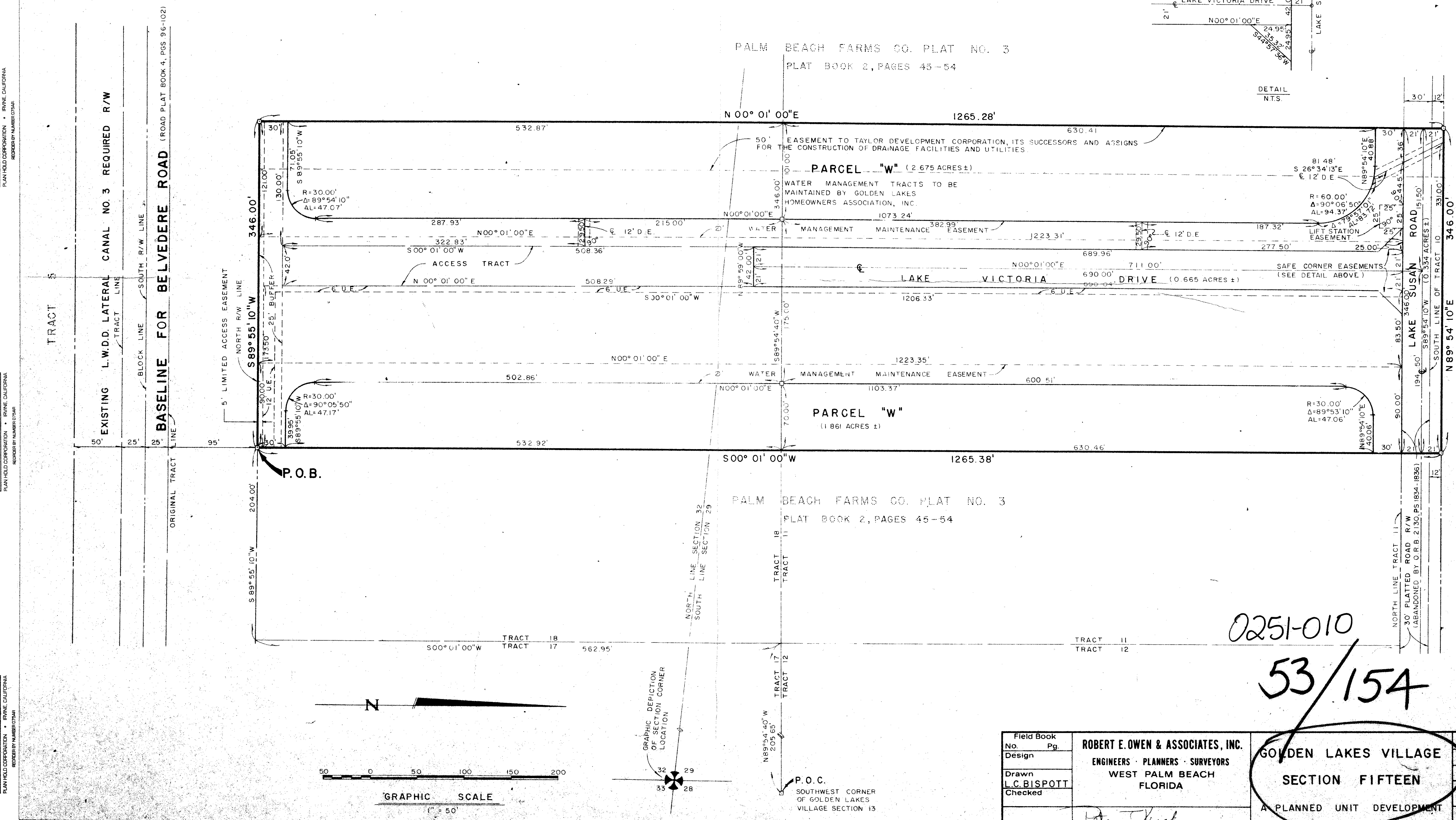
COUNTY OF PALM BEACH
 STATE OF FLORIDA]
 This Plat was filed for record at
 this day of
 19..... and duly recorded in Plat Book No
 on page
 JOHN B. DUNKLE, Clerk, Circuit Court
 By..... D.C.



DRAWING NUMBER

DRAWING NUMBER

DRAWING NUMBER



0251-010
53/154

Field Book No. Pg.	ROBERT E. OWEN & ASSOCIATES, INC.	Job No. 85-1006
Design	ENGINEERS · PLANNERS · SURVEYORS	Scale AS SHOWN
Drawn L.C. BISPOTT	WEST PALM BEACH FLORIDA	Date SEPT., 1985
Checked		Sheet 2
		of 2
		File No. BF-2319-1

PALM BEACH FARMS CO. PLAT NO. 3
 PLAT BOOK 2, PAGES 45-54