

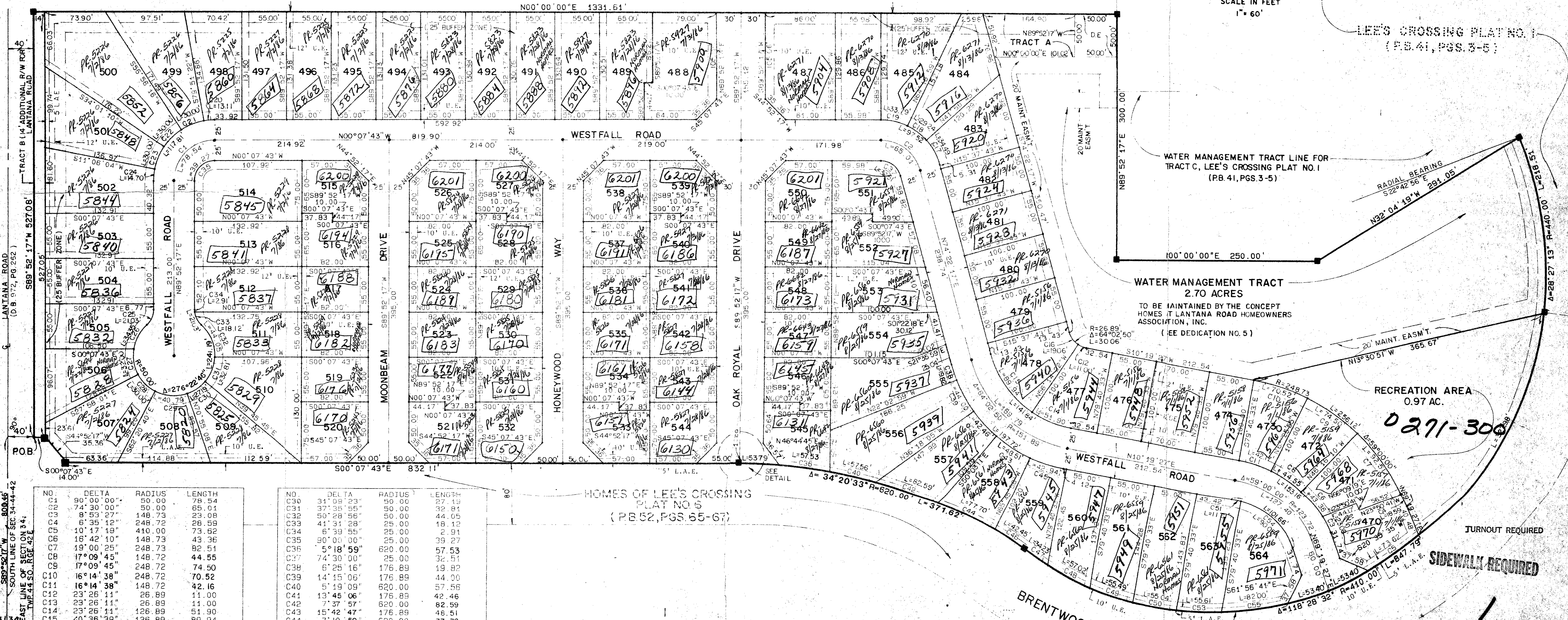
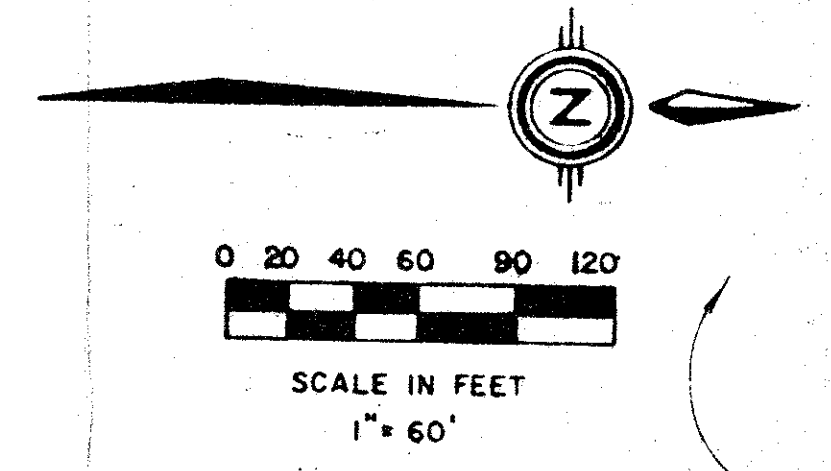
HOMES OF LEE'S CROSSING PLAT NO. 9

A P.U.D.

SITUATE IN SECTION 34, TOWNSHIP 44 SOUTH, RANGE 42 EAST,
PALM BEACH COUNTY, FLORIDA.

SHEET 2 OF 2

STATE OF FLORIDA
COUNTY OF PALM BEACH
THIS PLAT WAS FILED FOR
RECORD AT _____ DAY OF _____
AD. 1986 AND DULY RECORDED
IN PLAT BOOK _____ ON PAGES
_____ AND _____
JOHN B. DUNKLE, CLERK
CIRCUIT COURT
BY: _____ D.C.



HOMES OF LEE'S CROSSING
PLAT NO. 6
(P.B. 52, PGS. 65-67)

NO.	DELTA	RADIUS	LENGTH	NO.	DELTA	RADIUS	LENGTH
C01	90° 00' 00"	50.00	78.54	C30	31° 08' 23"	50.00	72.81
C02	8° 53' 27"	148.73	23.08	C31	37° 35' 55"	50.00	72.81
C03	6° 35' 12"	248.72	28.59	C32	50° 28' 56"	50.00	44.05
C04	10° 17' 18"	410.00	73.62	C33	41° 31' 28"	25.00	18.12
C05	18° 42' 10"	148.73	43.36	C34	6° 39' 55"	25.00	2.91
C06	19° 00' 25"	248.73	82.51	C35	90° 00' 00"	25.00	39.27
C07	17° 09' 45"	148.72	44.55	C36	5° 18' 59"	620.00	57.53
C08	17° 09' 45"	248.72	74.50	C37	74° 30' 00"	25.00	32.51
C09	16° 14' 38"	248.72	70.52	C38	6° 25' 16"	176.89	19.82
C10	16° 14' 38"	148.72	42.16	C39	14° 15' 06"	176.89	44.00
C11	23° 26' 11"	26.89	11.00	C40	5° 19' 09"	620.00	57.56
C12	23° 26' 11"	26.89	11.00	C41	13° 45' 06"	176.89	42.46
C13	23° 26' 11"	26.89	11.00	C42	7° 37' 57"	620.00	82.59
C14	23° 26' 11"	126.89	51.90	C43	15° 42' 47"	176.89	48.51
C15	40° 36' 38"	26.89	98.94	C44	7° 10' 50"	620.00	77.70
C16	40° 36' 38"	26.89	98.94	C45	13° 54' 35"	176.89	42.94
C17	26° 21' 02"	75.00	34.49	C46	3° 55' 24"	620.00	42.45
C18	22° 20' 15"	75.00	29.24	C47	4° 46' 59"	410.00	34.23
C19	25° 48' 43"	75.00	33.79	C48	7° 58' 05"	410.00	57.02
C20	10° 00' 55"	75.00	13.11	C49	7° 45' 15"	410.00	55.49
C21	22° 55' 06"	75.00	30.00	C50	7° 41' 31"	410.00	55.04
C22	22° 55' 06"	75.00	30.00	C51	6° 44' 20"	98.73	11.61
C23	22° 55' 06"	75.00	30.00	C52	6° 44' 20"	98.73	11.61
C24	12° 13' 47"	75.00	14.70	C53	7° 46' 16"	410.00	55.61
C25	48° 11' 53"	26.89	21.03	C54	52° 15' 40"	98.72	30.05
C26	39° 24' 31"	50.00	34.35	C55	11° 27' 33"	410.00	62.00
C27	36° 40' 09"	50.00	32.06				
C28	34° 22' 39"	50.00	30.00				
C29	46° 44' 12"	50.00	40.79				

Meridian Surveying and mapping inc.
WEST PALM BEACH, FLORIDA

DRAWN: M.E.H. DATE: FEB. 1984
CHECKED: SCALE: 1" = 60'
DRAWING NO.: 84-P-006

HOMES OF LEE'S CROSSING PLAT NO. 9