

DRAWING NUMBER  
**53/191**

# STEEPLE CHASE

PARCEL G, THE POLO CLUB P.U.D.  
BEING A REPLAT OF A PORTION OF TRACT III, "THE POLO CLUB PLAT I"  
SITUATE IN SECTION 35, TOWNSHIP 46 SOUTH, RANGE 42 EAST,  
PALM BEACH COUNTY, FLORIDA

**191**

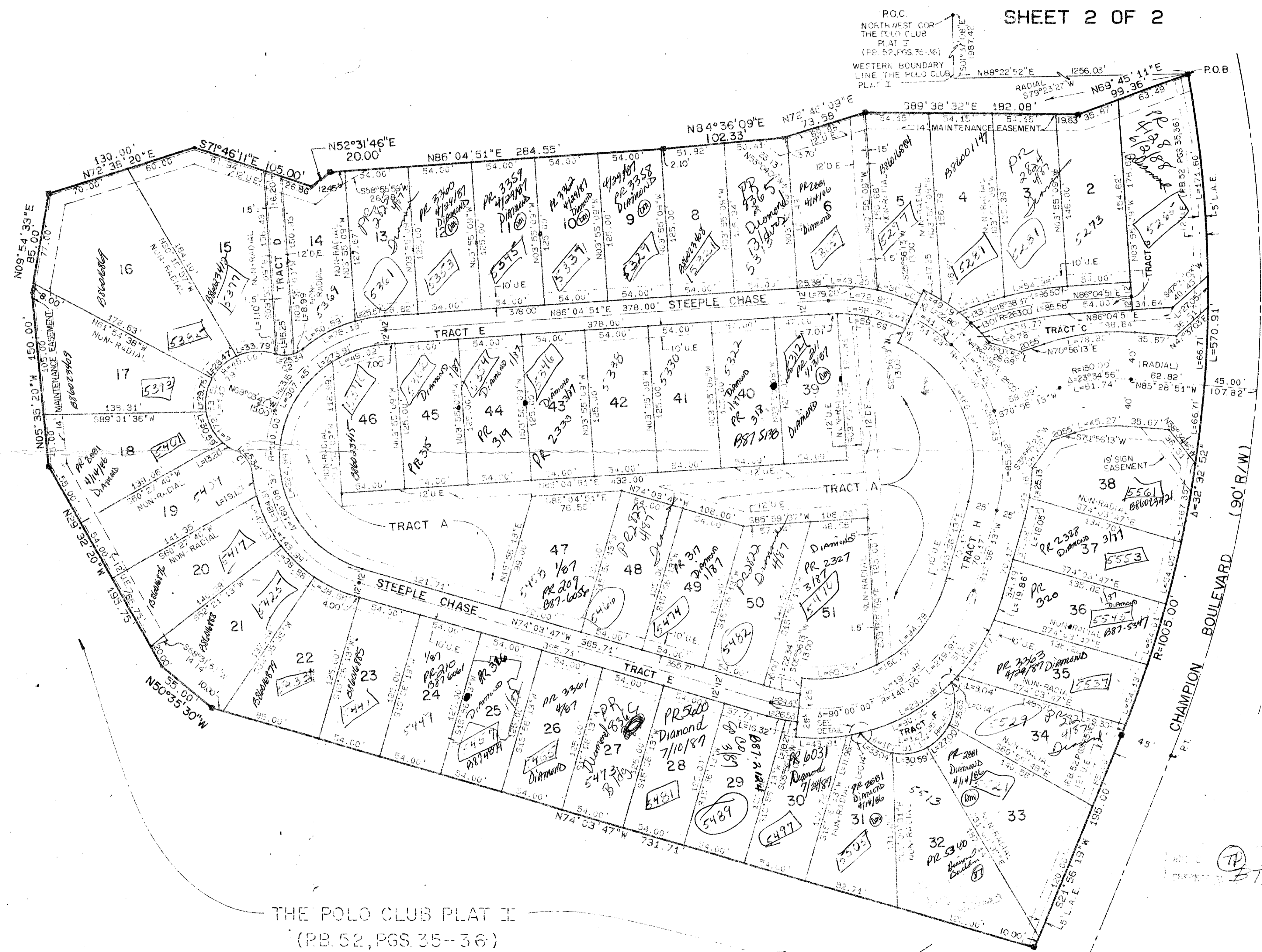
STATE OF FLORIDA  
COUNTY OF PALM BEACH  
THIS PLAT WAS FILED FOR  
RECORD \_\_\_\_\_  
THIS \_\_\_\_\_ DAY OF \_\_\_\_\_  
AD, 1985 AND DULY RECORDED  
IN PLAT BOOK \_\_\_\_\_ ON PAGES  
\_\_\_\_\_ AND \_\_\_\_\_  
JOHN B. DUNKLE, CLERK  
BY: \_\_\_\_\_, D.C.

SHEET 2 OF 2

DRAWING NUMBER

DRAWING NUMBER

DRAWING NUMBER

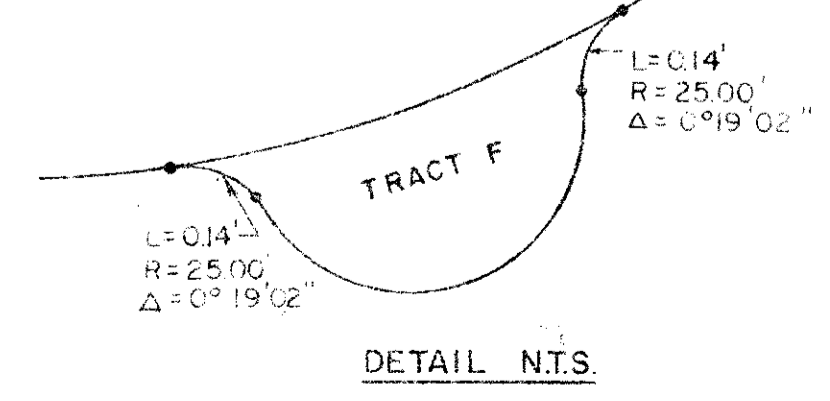


THE POLO CLUB PLAT I  
(P.B. 52, PGS. 35--36)

NO.	DELTA	RADIUS	LENGTH
C1	58°04'17"	25.00'	25.34'
C2	58°04'17"	25.00'	25.34'

0436-029

**53/191**



Meridian  
Surveying and mapping inc.  
2328 SO. CONGRESS AVE.  
WEST PALM BEACH, FL.

DRAWN MHC / MEH	DATE DEC. 1985
CHECKED MAM	SCALE 1" = 50'
DRAWING NO. 85-P-089	

**STEEPLE CHASE  
PARCEL G, THE POLO CLUB P.U.D.**