

53/193
DRAWING NUMBER

PLAN HOLD CORPORATION - IRVINE, CALIFORNIA
RECORD BY NUMBER 0534

DRAWING NUMBER

PLAN HOLD CORPORATION - IRVINE, CALIFORNIA
RECORD BY NUMBER 0534

DRAWING NUMBER

PLAN HOLD CORPORATION - IRVINE, CALIFORNIA
RECORD BY NUMBER 0534

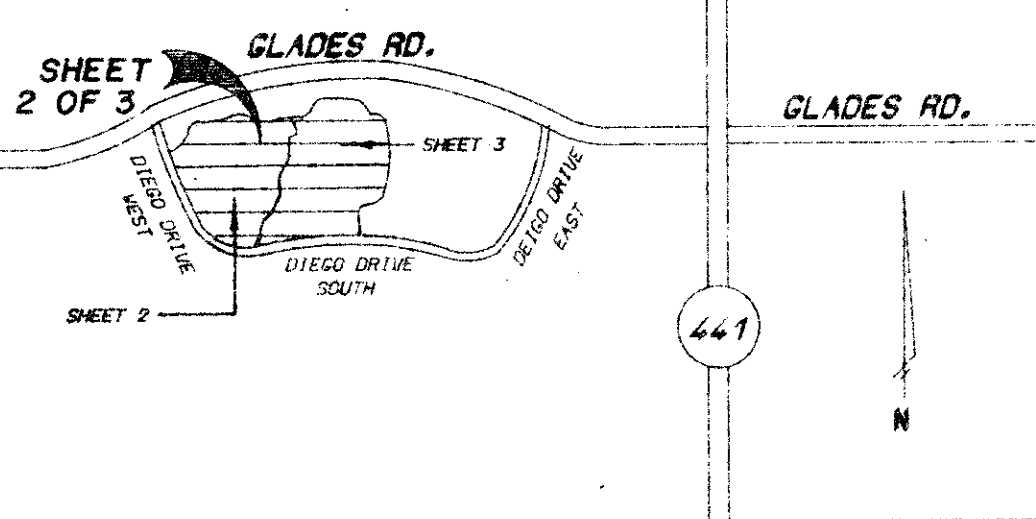
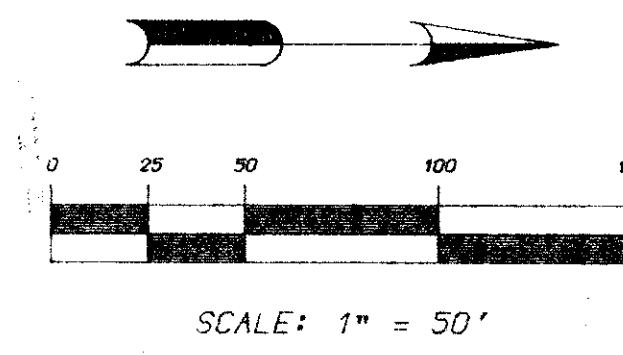
DRAWING NUMBER

PLAN HOLD CORPORATION - IRVINE, CALIFORNIA
RECORD BY NUMBER 0534

TRACT G

A REPLAT OF ALL OF TRACT G OF THE PLAT OF MISSION BAY A P.U.D. AS RECORDED IN PLAT BOOK 53, PAGES 112-120, OF THE PUBLIC RECORDS OF PALM BEACH COUNTY, FLORIDA. SECTION 13, TOWNSHIP 47 SOUTH, RANGE 41 EAST

193



LOCATION MAP
N.T.S.

SHEET 2 OF 3 JANUARY, 1986

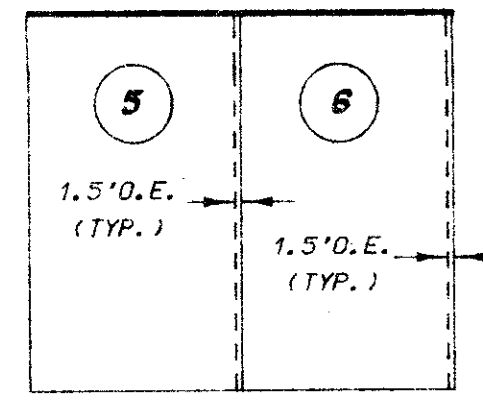
SURVEYOR'S NOTES

- 1.) ALL P.R.M.'s BEAR THE REGISTRATION NUMBER 3143 SHOWN THUS - ■
- 2.) THE BEARINGS SHOWN HEREON ARE BASED ON A BEARING OF N.00°54'39"W. ON THE EAST LINE OF SECTION 13-47-41.
- 3.) D.E. - INDICATES A DRAINAGE EASEMENT.
- 4.) S.S. - INDICATES A SANITARY SEWER EASEMENT.
- 5.) ROADWAYS WITHIN THE PLAT OF FLORIDA FRUIT LANDS COMPANY'S SUBDIVISION NO. 2 OF SECTION 13-47-41 WERE ABANDONED PER RESOLUTION NO. 8-94-1932, AS RECORDED IN BOOK 4438, PAGE 1770-1773, PUBLIC RECORDS OF PALM BEACH COUNTY, FLORIDA.
- 6.) ALL P.C.P.'s (PERMANENT CONTROL POINTS) ARE SHOWN THUS - ●
- 7.) L.A.E. - INDICATES LIMITED ACCESS EASEMENTS.
- 8.) NO BUILDINGS OR ANY KIND OF CONSTRUCTION SHALL BE PLACED ON UTILITY OR DRAINAGE EASEMENT.
- 9.) THERE SHALL BE NO TREES OR SHRUBS PLACED ON UTILITY EASEMENTS WHICH ARE PROHIBIT FOR WATER AND SEWER USE OR UPON DRAINAGE EASEMENTS.
- 10.) O.E. - INDICATES OVERHANG EASEMENT
- 11.) C - INDICATES CENTRAL ANGLE
- 12.) A - INDICATES ARC DISTANCE
- 13.) R - INDICATES RADIUS
- 14.) (N.R.) - INDICATES NON-RADIAL
- 15.) (N.R.L.) - INDICATES LOT LINE NON-RADIAL TO REAR LOT LINE
- 16.) (N.R.F.L.) - INDICATES LOT LINE NON-RADIAL TO FRONT LOT LINE
- 17.) U.E. - INDICATES UTILITY UTILITY EASEMENTS.
- 18.) LANDSCAPING ON UTILITY UTILITY EASEMENTS SHALL BE ALLOWED ONLY AFTER CONSENT OF ALL UTILITY COMPANIES OCCUPYING SAME.



THIS INSTRUMENT PREPARED BY:
LEO E. NOBLE P.L.S. 3143 STATE OF FLORIDA
LAWSON & NOBLE, INC.
ENGINEERS - PLANNERS - SURVEYORS
LAKE WORTH, FLORIDA

WATER MANAGEMENT & RECREATION TRACT NO. 5
(DRAINAGE EASEMENT)
PER P.B. 53, PGS. 112-120



TRACT G
53/193
0454-007

R=150.00' (TOTAL)
D=55°00'00" (TOTAL)
A=143.99' (TOTAL)
(TOTAL CURVE)

MATCH LINE "A"
SEE SHEET 3 OF 3