

54/14

DRAWING NUMBER

DRAWING NUMBER

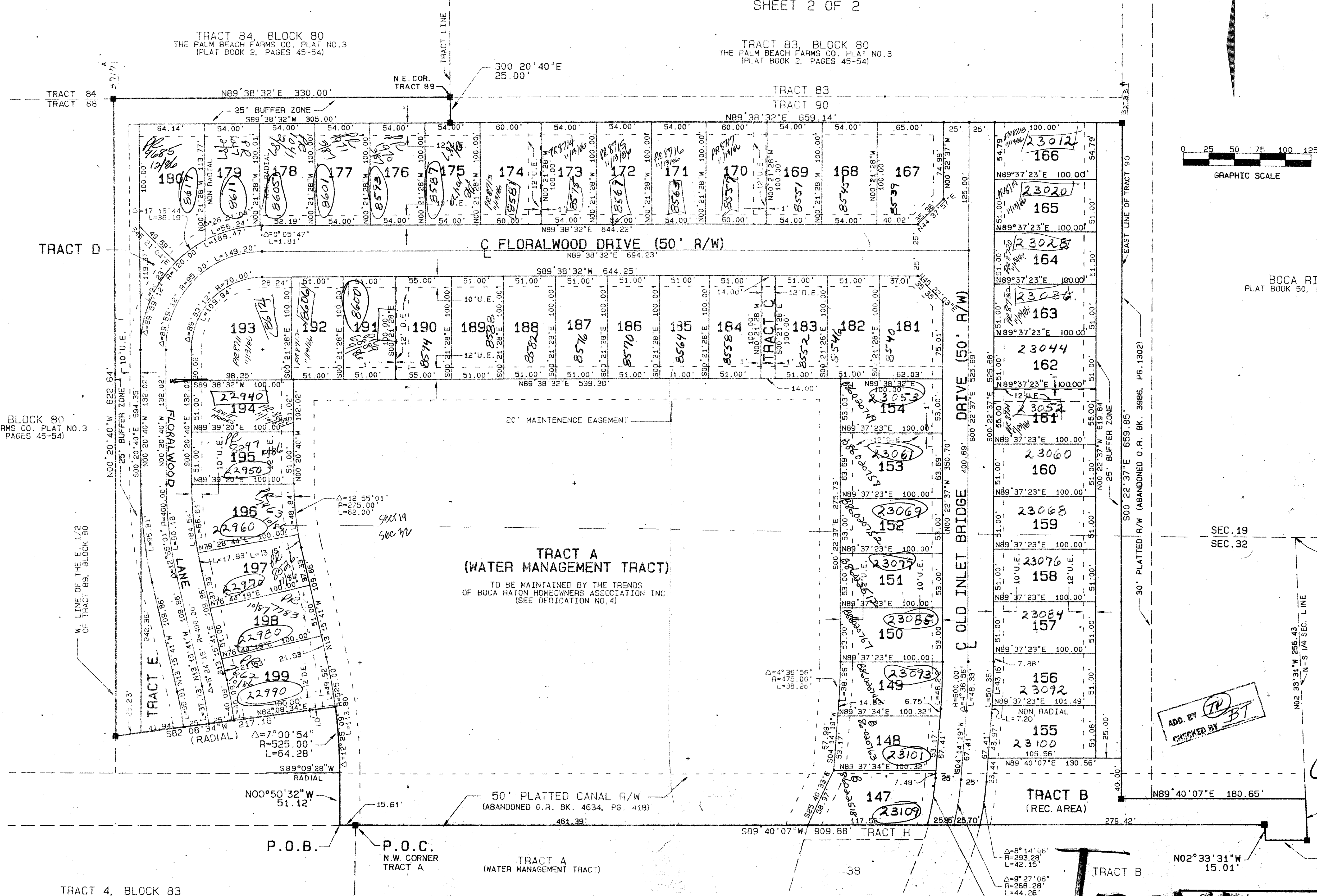
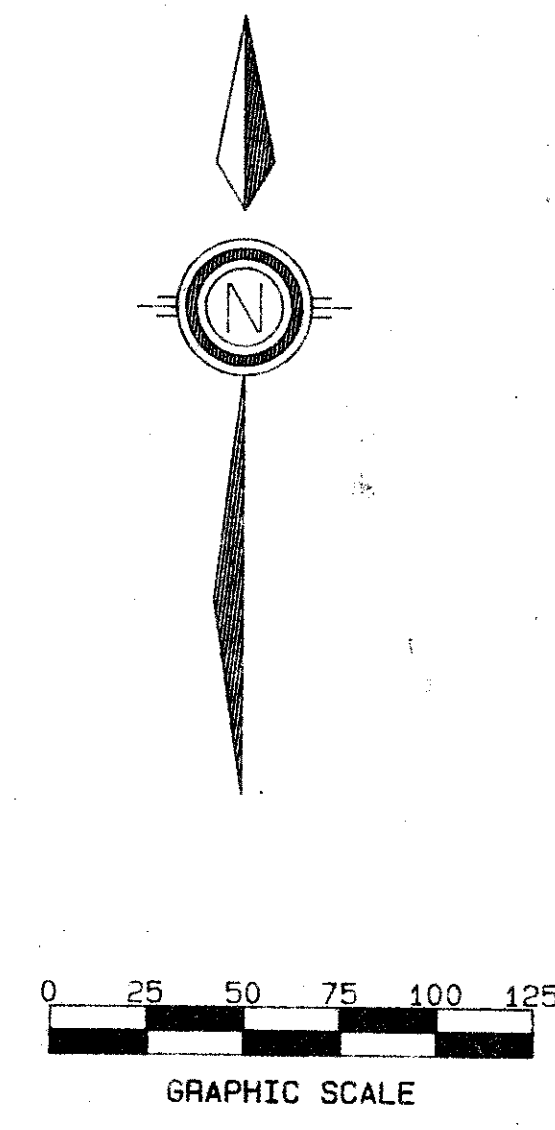
DRAWING NUMBER

TRENDS AT BOCA RATON UNIT II

(A REPLAT OF PART OF PALM BEACH FARMS CO. PLAT NO. 3)
PART OF CYPRESS POINT A P.U.D.
SITUATE IN SECTIONS 29 & 32, TOWNSHIP 47 SOUTH, RANGE 42 EAST
PALM BEACH COUNTY, FLORIDA

SHEET 2 OF 2

14
STATE OF FLORIDA
COUNTY OF PALM BEACH
THIS PLAT WAS FILED FOR
RECORD
THIS DAY OF
1986 AND DULY RECORDED
IN PLAT BOOK ON PAGES
AND
JOHN B. DUNKLE, CLERK
BY: D.C.



TRACT 89, BLOCK 80
THE PALM BEACH FARMS CO. PLAT NO. 3
(PLAT BOOK 2, PAGES 45-54)

TRACT 4, BLOCK 83
THE PALM BEACH FARMS CO. PLAT NO. 3
(PLAT BOOK 2, PAGES 45-54)

TRACT A
(WATER MANAGEMENT TRACT)
TO BE MAINTAINED BY THE TRENDS
OF BOCA RATON HOMEOWNERS ASSOCIATION INC.
(SEE DEDICATION NO. 4)

TRACT B
(REC. AREA)

BOCA RIO NORTH
PLAT BOOK 50, PAGES 170-174)

ADD. BY [Signature]
EMPLOYED BY [Signature]

0266-002
54/14

TRENDS AT BOCA RATON UNIT I
(PLAT BOOK 51, PAGES 131-134)

TRENDS AT BOCA RATON UNIT II
TRENDS AT BOCA RATON UNIT II
2328 S.O. CYPRESS AVE
WEST PALM BEACH, FLORIDA
J.B. DUNKLE
1986-1986
SCALE 1"=50'
DRAWING NO. 86-014-PL2