

DRAWING NUMBER
54/116

DRAWING NUMBER

DRAWING NUMBER

DRAWING NUMBER

TRENDS AT BOCA RATON UNIT III

(A REPLAT OF PART OF PALM BEACH FARMS COMPANY PLAT NO. 3)
PART OF CYPRESS POINT A P.U.D.
SITUATE IN SECTION 32, TOWNSHIP 47 SOUTH, RANGE 42 EAST
PALM BEACH COUNTY, FLORIDA

SHEET 2 OF 2

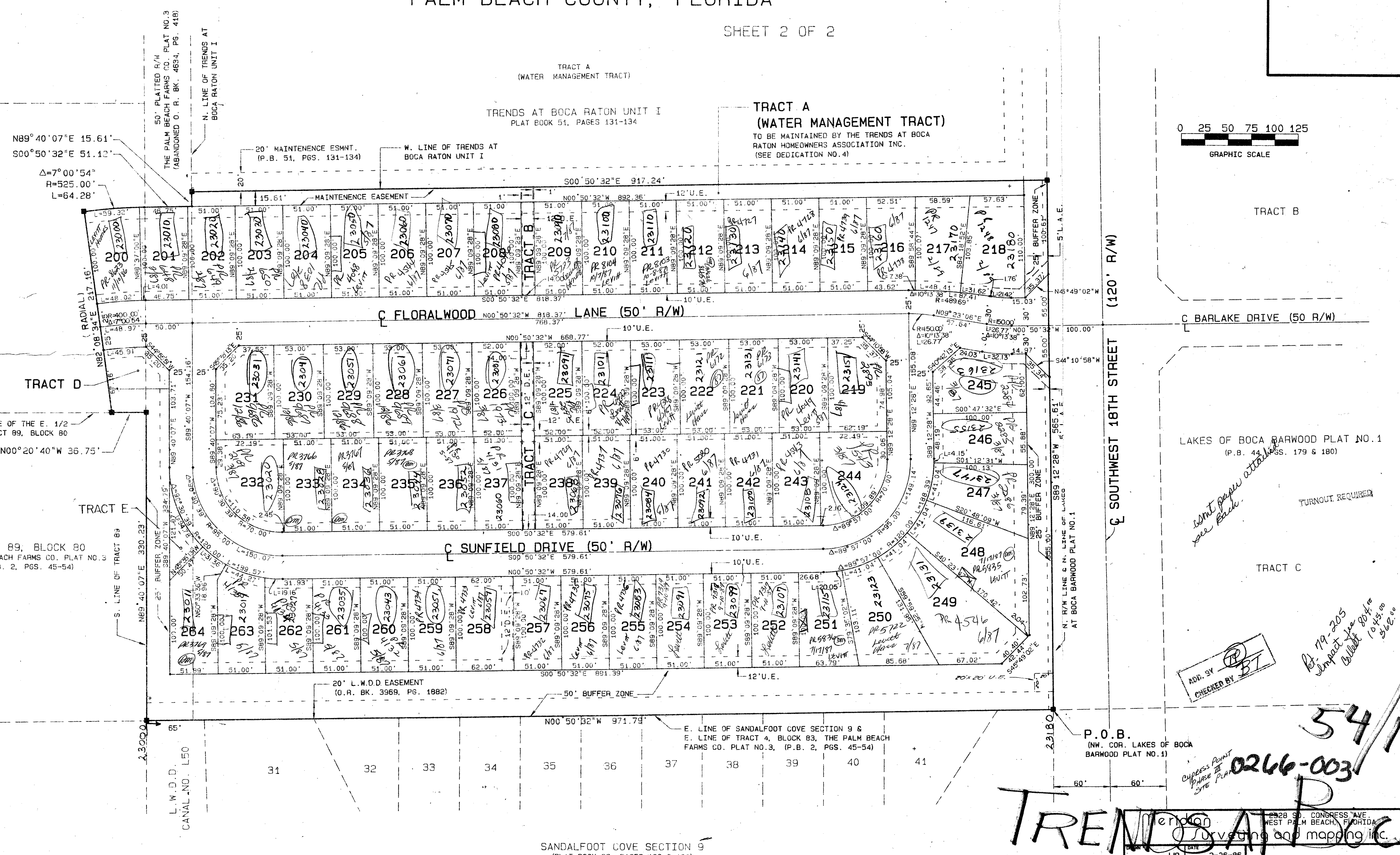
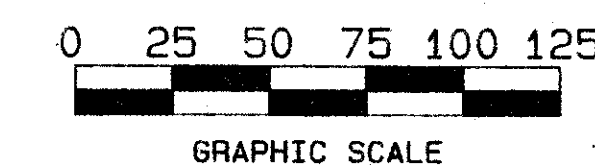
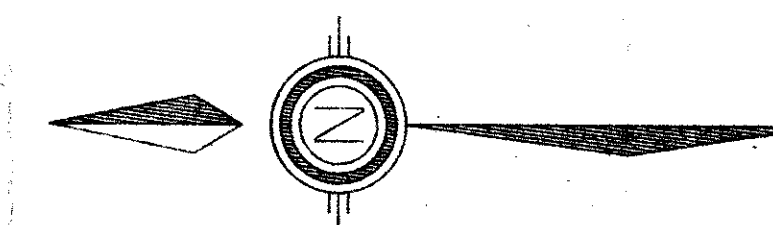
16

STATE OF FLORIDA
COUNTY OF PALM BEACH

THIS PLAT WAS FILED FOR
RECORD

THIS DAY OF
1986 AND DULY RECORDED
IN PLAT BOOK ON PAGES
AND

JOHN B. DUNKLE, CLERK
BY: D.C.



ADV. BY
CHECKED BY

Plat 19-205
Inspect for 80476
10/25/86
5/12/86

54/116
0266-003

TRENDS AT BOCA

SANDALFOOT COVE SECTION 9
(PLAT BOOK 38, PAGES 199 & 200)

CHECKED	JJR	DATE	2-26-86
SCALE	RAH	1"=50'	
DRAWING NO.		86-014PL3	

TRENDS AT BOCA RATON
UNIT III