

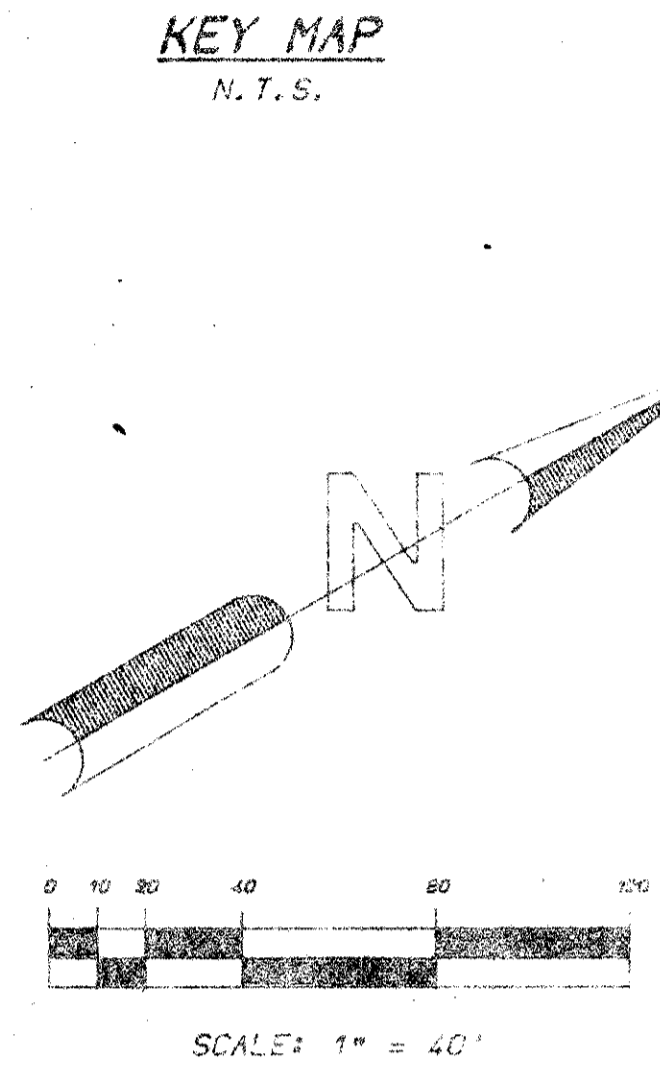
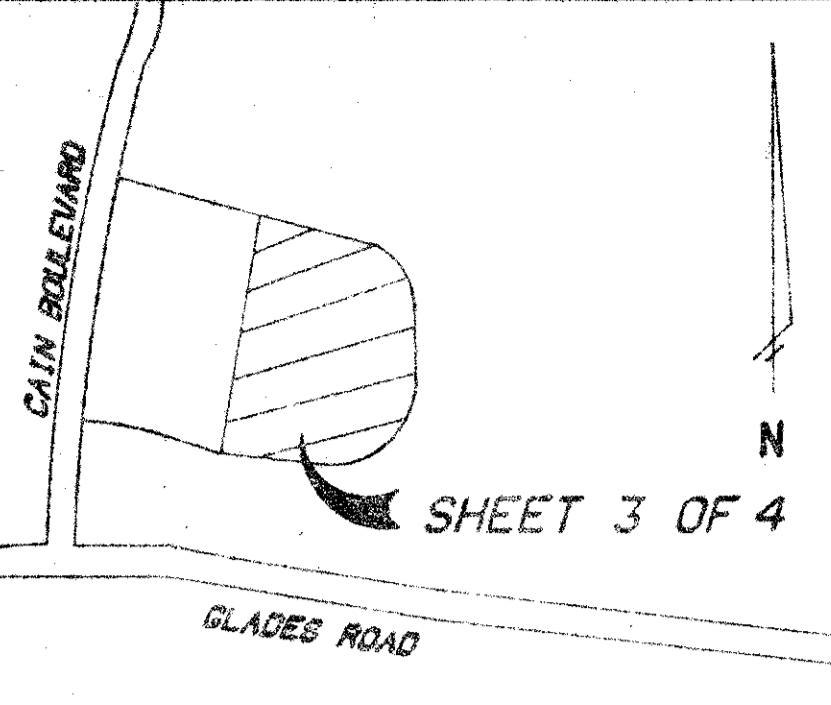
54/23

23

MISSION BAY P.U.D. PLAT NO. 2

IN SECTION 13, TOWNSHIP 47 SOUTH, RANGE 41 EAST, PALM BEACH COUNTY, FLORIDA, BEING A REPLAT OF A PORTION OF TRACTS 9, 10, 23, 24, 33, 34, 63 & 64 OF THE PLAT OF FLORIDA FRUIT LANDS COMPANY'S SUBDIVISION NO. 2 OF SECTION 13-47-41, AS RECORDED IN PLAT BOOK 1, PAGE 102 OF THE PUBLIC RECORDS OF PALM BEACH COUNTY, FLORIDA

SHEET 3 OF 4 MAY, 1986

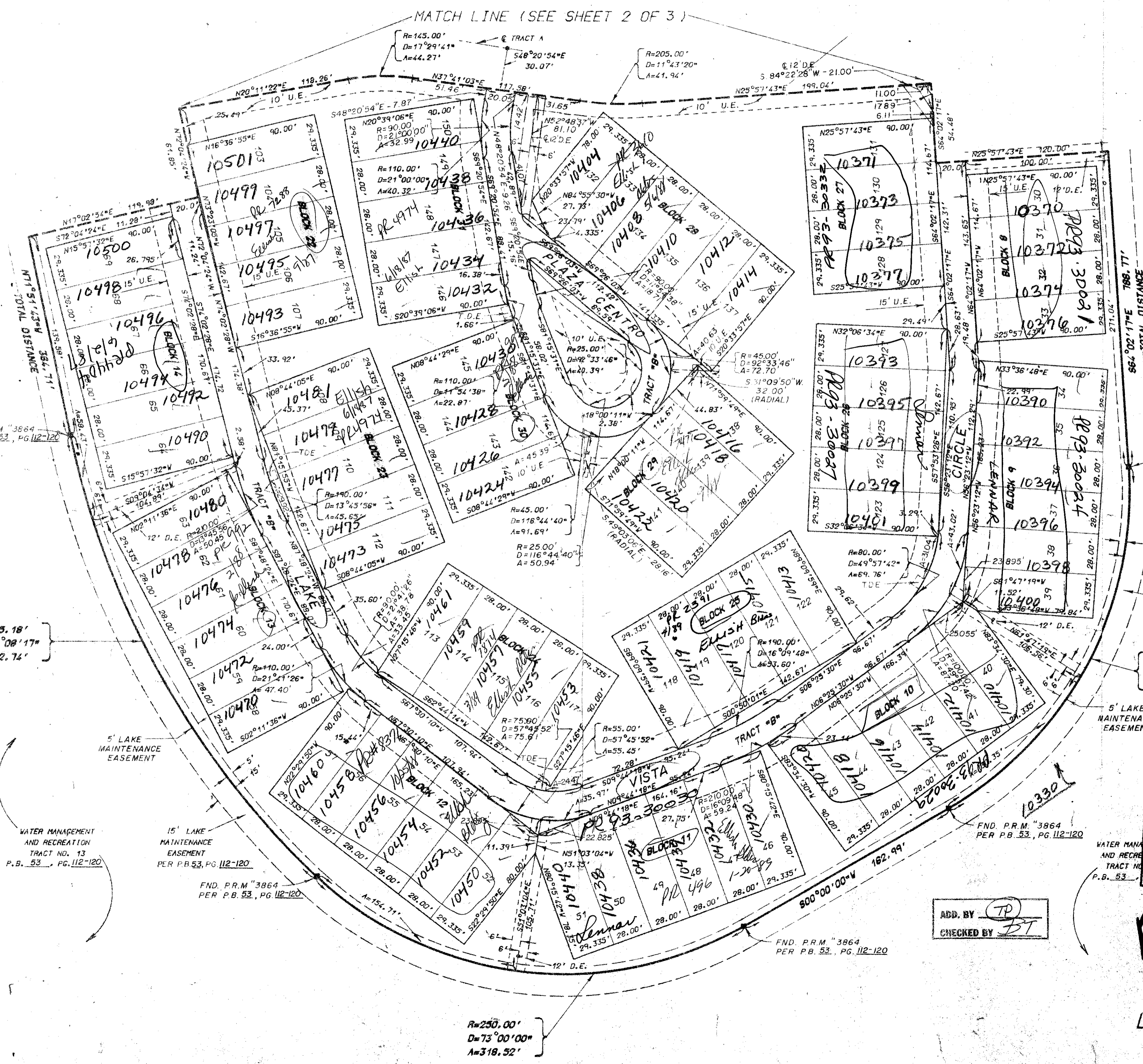


KEY MAP N.T.S.

DRAWING NUMBER

DRAWING NUMBER

DRAWING NUMBER



SURVEYOR'S NOTES

- 1.) ALL P.R.M.'s BEAR THE REGISTRATION NUMBER 3864 SHOWN THUS - ■ P.R.M. UNLESS OTHERWISE NOTED.
- 2.) ALL P.C.P.'s (PERMANENT REFERENCE POINTS) SHOWN THUS - ● P.C.P.
- 3.) THE BEARINGS SHOWN HEREON ARE BASED ON A BEARING OF N.00°54'39\".
- 4.) D.E. - INDICATES A DRAINAGE EASEMENT.
- 5.) U.E. - INDICATES A UTILITY EASEMENT.
- 6.) ROADWAYS WITHIN THE PLAT OF FLORIDA FRUIT LANDS COMPANY'S SUBDIVISION NO. 2 OF SECTION 13-47-41 WERE ABANDONED PER RESOLUTION NO. R-84-1932, AS RECORDED IN BOOK 4438, PAGE 1770-1773, PUBLIC RECORDS OF PALM BEACH COUNTY, FLORIDA.
- 7.) NO BUILDINGS OR ANY KIND OF CONSTRUCTION SHALL BE PLACED ON UTILITY OR DRAINAGE EASEMENTS.
- 8.) THERE SHALL BE NO TREES OR SHRUBS PLACED ON UTILITY EASEMENTS WHICH ARE PROVIDED FOR WATER AND AND SEWER USE OR UPON DRAINAGE EASEMENTS.
- 9.) LANDSCAPING ON OTHER UTILITY EASEMENTS SHALL BE ALLOWED ONLY AFTER CONSENT OF ALL UTILITY COMPANIES OCCUPYING SAME.
- 10.) WHERE UTILITY AND DRAINAGE EASEMENTS INTERSECT, DRAINAGE EASEMENTS SHALL TAKE PRECEDENCE.
- 11.) T.D.E. - INDICATES A TYPICAL DRAINAGE EASEMENT; SEE DETAIL 'A'.
- 12.) D - DENOTES CENTRAL ANGLE.
- 13.) A - DENOTES ARC LENGTH.

SUBDIVISION	MISSION BAY
BOOK	54
FLOOD ZONE	B
QUARTER	68
TRACT NO.	3864
P.U.D. NAME	MISSION BAY P.U.D.
FLOOD MAP	DETAIL 'A'
ZONING	
ZIP CODE	33434

MISSION BAY # 54/23

LAWSON, NOBLE & ASSOCIATES, INC.
ENGINEERS PLANNERS TESTING SURVEYORS
BOYNTON BEACH, FLORIDA