

DRAWING NUMBER  
**54/41**

A PART OF VIA VERDE, P.U.D.

# TOWN COLONY II

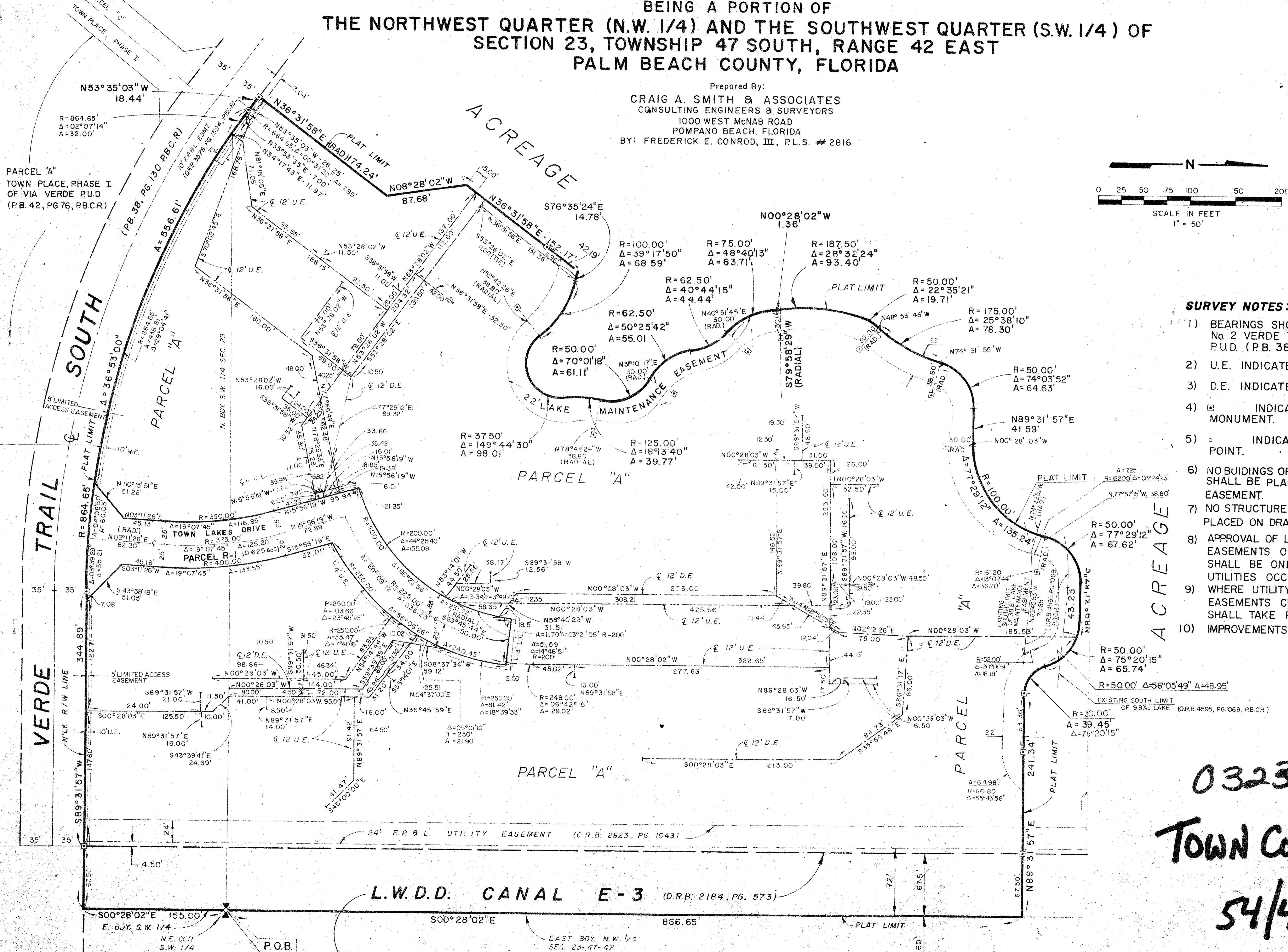
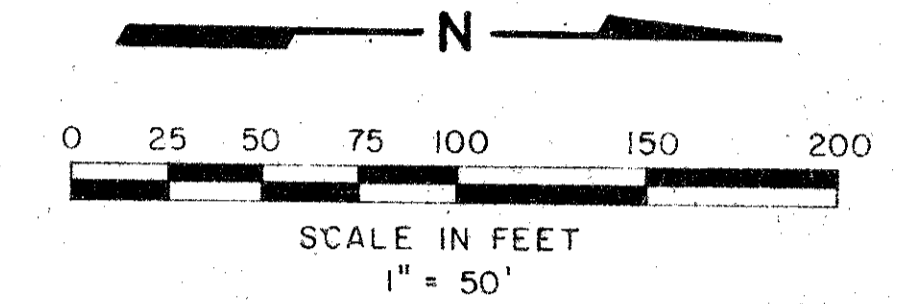
SHEET 2 OF 2 SHEETS

41

BEING A PORTION OF  
THE NORTHWEST QUARTER (N.W. 1/4) AND THE SOUTHWEST QUARTER (S.W. 1/4) OF  
SECTION 23, TOWNSHIP 47 SOUTH, RANGE 42 EAST  
PALM BEACH COUNTY, FLORIDA

Prepared By:  
**CRAIG A. SMITH & ASSOCIATES**  
CONSULTING ENGINEERS & SURVEYORS  
1000 WEST McNAB ROAD  
POMPANO BEACH, FLORIDA  
BY: **FREDERICK E. CONROD, III, P.L.S. #2816**

STATE OF FLORIDA } S.S.  
COUNTY OF PALM BEACH }  
THIS PLAT WAS FILED FOR  
RECORD AT \_\_\_\_\_, THIS  
DAY OF \_\_\_\_\_, 1986, A.D.,  
AND DULY RECORDED IN PLAT BOOK  
NO. \_\_\_\_\_ ON PAGES  
AND \_\_\_\_\_  
JOHN B. DUNKLE, CLERK  
BY: \_\_\_\_\_, D.C.



- SURVEY NOTES:**
- 1) BEARINGS SHOWN HEREON REFER TO PLAT No. 2 VERDE TRAIL SOUTH OF VIA VERDE - P.U.D. (P.B. 38, PG. 130, P.B.C.R.)
  - 2) U.E. INDICATES UTILITY EASEMENT.
  - 3) D.E. INDICATES DRAINAGE EASEMENT.
  - 4)  INDICATES PERMANENT REFERENCE MONUMENT.
  - 5)  INDICATES PERMANENT CONTROL POINT.
  - 6) NO BUILDINGS OR ANY KIND OF CONSTRUCTION SHALL BE PLACED ON UTILITY OR DRAINAGE EASEMENT.
  - 7) NO STRUCTURES, TREES OR SHRUBS SHALL BE PLACED ON DRAINAGE EASEMENTS.
  - 8) APPROVAL OF LANDSCAPING ON UTILITY EASEMENTS OTHER THAN WATER OR SEWER SHALL BE ONLY WITH APPROVAL OF ALL UTILITIES OCCUPYING SAME.
  - 9) WHERE UTILITY EASEMENTS & DRAINAGE EASEMENTS CROSS, DRAINAGE EASEMENTS SHALL TAKE PRECEDENCE.
  - 10) IMPROVEMENTS NOT LOCATED.

**0323-011**  
**Town Colony II**  
**54/41**  
*Trails 2/28  
Via Verde  
P.U.D.*

DRAWING NUMBER

DRAWING NUMBER

DRAWING NUMBER

DRAWING NUMBER  
**54/41**