

54/61

DRAWING NUMBER

DRAWING NUMBER

DRAWING NUMBER

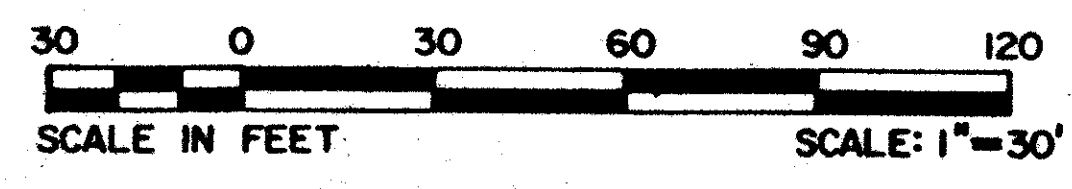
ACME IMPROVEMENT  
DISTRICT CANAL C-15

# TRACT 42 - B OF WELLINGTON P.U.D.

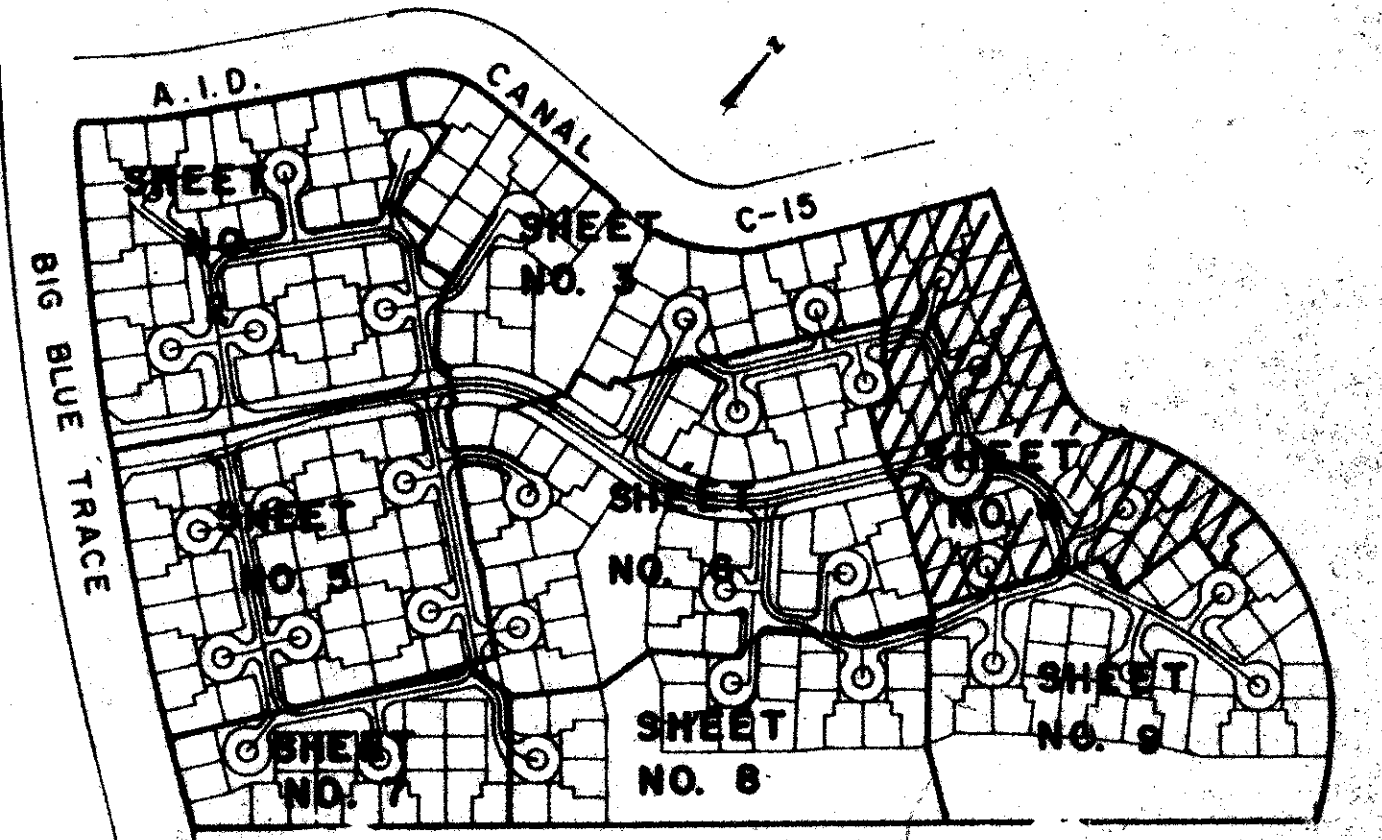
IN PART OF SECTION 10, TOWNSHIP 44 SOUTH, RANGE 41 EAST  
PALM BEACH COUNTY, FLORIDA  
IN NINE SHEETS SHEET NO. 4

61

GEE & JENSON  
ENGINEERS - ARCHITECTS - PLANNERS, INC.  
WEST PALM BEACH, FLORIDA  
JANUARY 1986

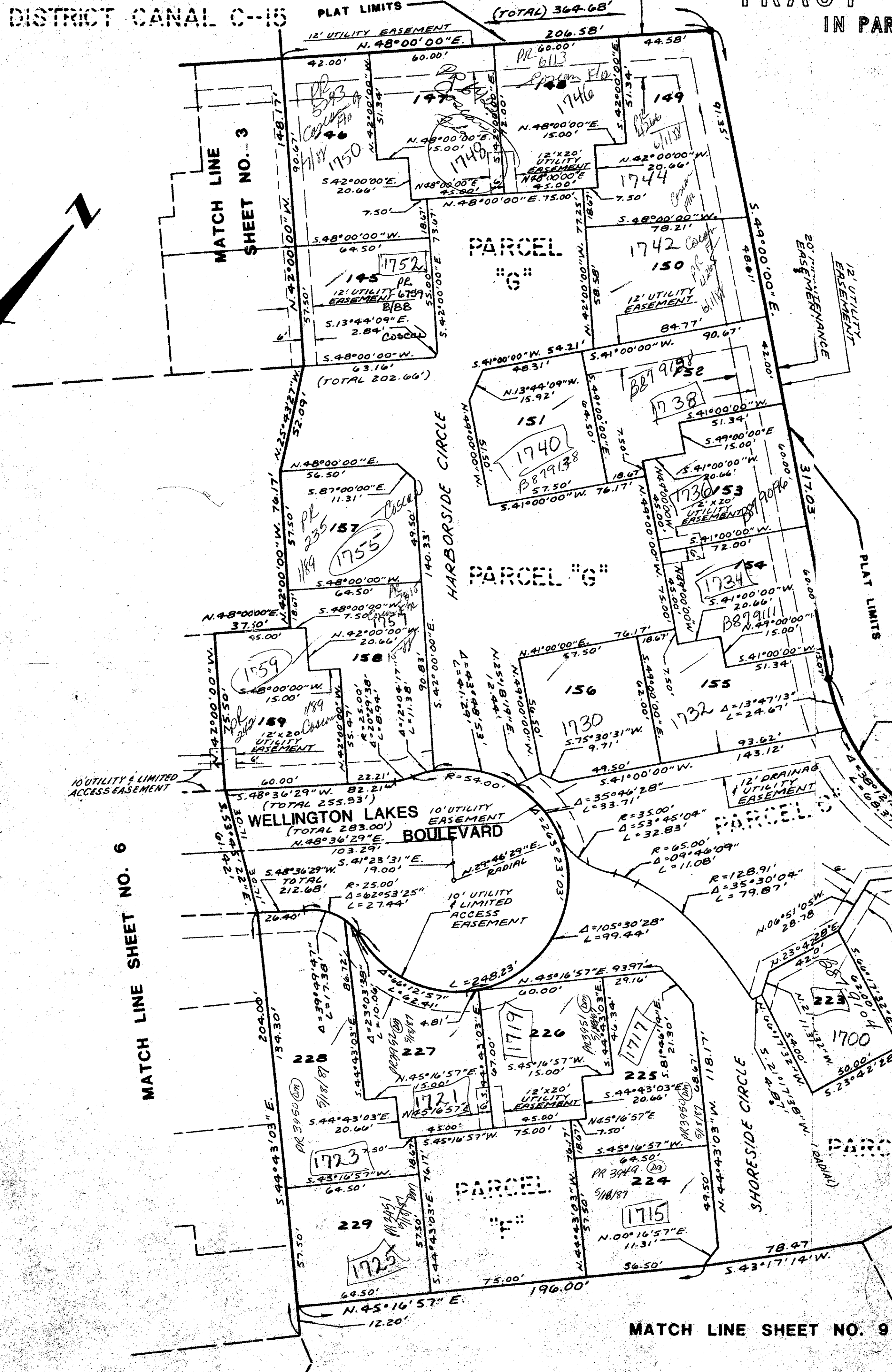


STATE OF FLORIDA  
COUNTY OF PALM BEACH  
This plat was filed for  
record at \_\_\_\_\_ M. this \_\_\_\_\_ day  
of \_\_\_\_\_ 1986, and duly  
recorded in Plat Book No. \_\_\_\_\_  
on Pages \_\_\_\_\_ thru \_\_\_\_\_  
JOHN B. DUNKLE  
Clerk Circuit Court  
By: \_\_\_\_\_ D.C.



KEY MAP  
N.T.S.

LAKE WELLINGTON  
DRAINAGE EASEMENT  
O.R.B. 2482, PGS. 250-256 INCLUSIVE



SUBDIVISION * Wellington	
BOOK 54	PAGE 61
FLOOD ZONE B	FLOOD MAP #100B
QUAD * 62	ZONING
SE	ZIP CODE 33414
PUD NAME Tract 42-B	

0332-063  
54/61  
Jan 17 1986  
SF Fades  
Clusters  
Pet. 86-32

TRACT 42-B OF  
WELLINGTON P.U.D.