

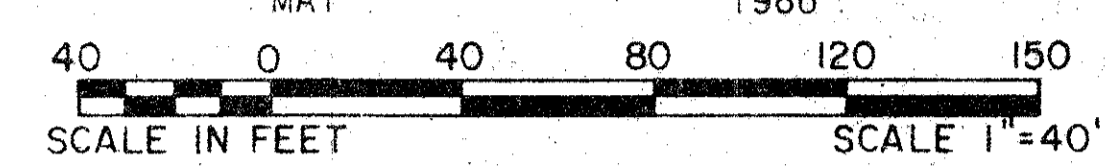
54/111

111

LAS CASITAS - PLAT NO. 4 PALM BEACH POLO AND COUNTRY CLUB OF WELLINGTON-P.U.D.

IN PART OF SECTION 14, TOWNSHIP 44 SOUTH, RANGE 41 EAST
PALM BEACH COUNTY, FLORIDA
IN TWO SHEETS SHEET TWO

GEE & JENSON
ENGINEERS - ARCHITECTS - PLANNERS, INC.
WEST PALM BEACH, FLORIDA
MAY 1986



NOTES

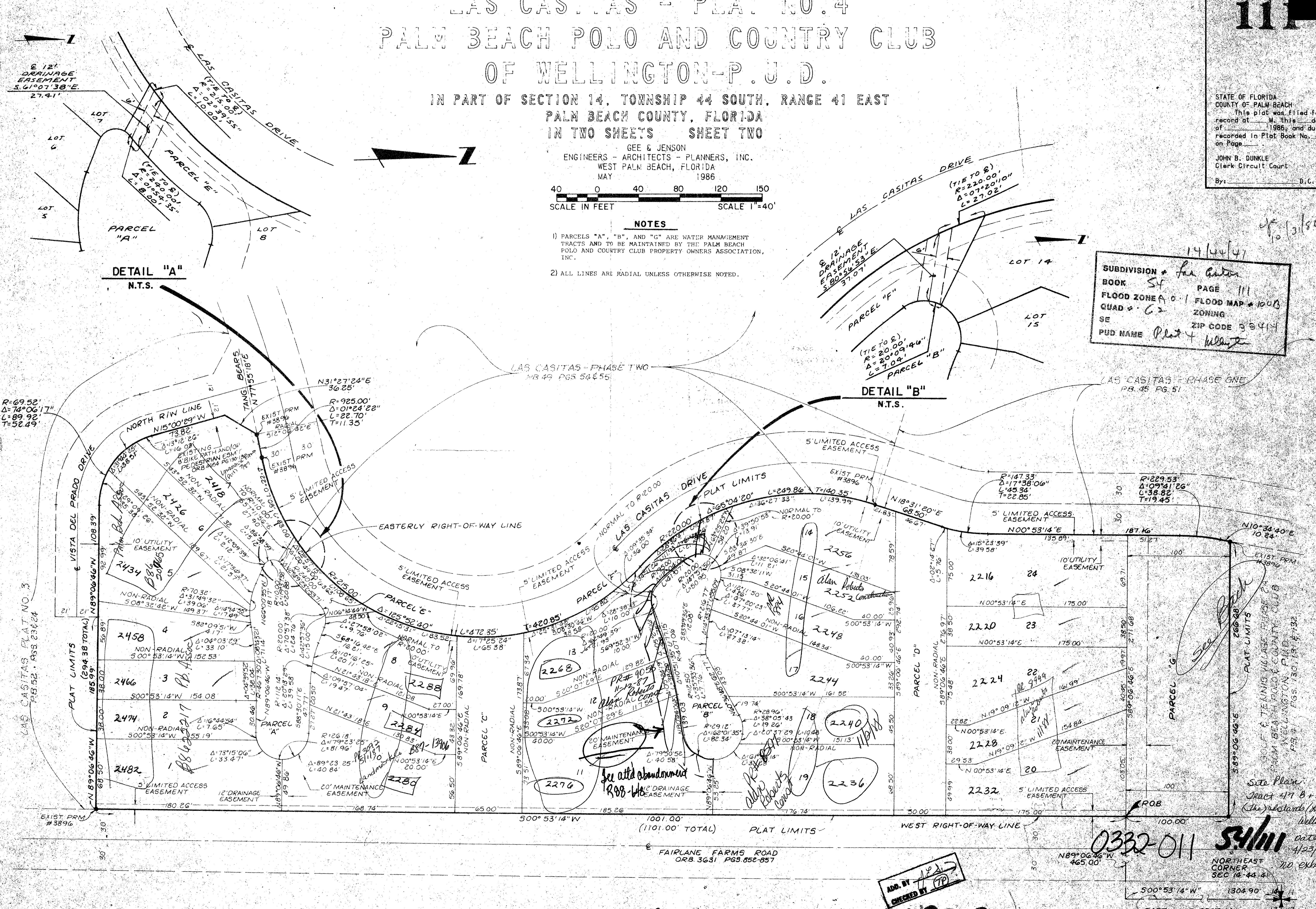
- 1) PARCELS "A", "B", AND "G" ARE WATER MANAGEMENT TRACTS AND TO BE MAINTAINED BY THE PALM BEACH POLO AND COUNTRY CLUB PROPERTY OWNERS ASSOCIATION, INC.
- 2) ALL LINES ARE RADIAL UNLESS OTHERWISE NOTED.

STATE OF FLORIDA
COUNTY OF PALM BEACH
This plat was filed for record at _____ M. this _____ day of _____ 1986, and duly recorded in Plat Book No. _____ on Page _____

JOHN B. DUNKLE
Clerk Circuit Court

By: _____ D.C.

14/14/4/1
SUBDIVISION *for Antea*
BOOK 54 PAGE 111
FLOOD ZONE A-0 FLOOD MAP # 100B
QUAD # C-2 ZONING
SE ZIP CODE 33414
PUD NAME *Plat # 111*



APPROVED BY
CHECKED BY

0332-011 54/111

NORTHEAST CORNER SEC 14-44-41

LAS CASITAS-PLAT NO. 4 P.B. P. AND C.C. OF WELLINGTON