

DRAWING NUMBER
54/116
 PLAN-HOLD CORPORATION • IRVINE, CALIFORNIA
 REGISTERED PROFESSIONAL LAND SURVEYOR
 LICENSE NO. 12543

GLENEAGLES PLAT EIGHT

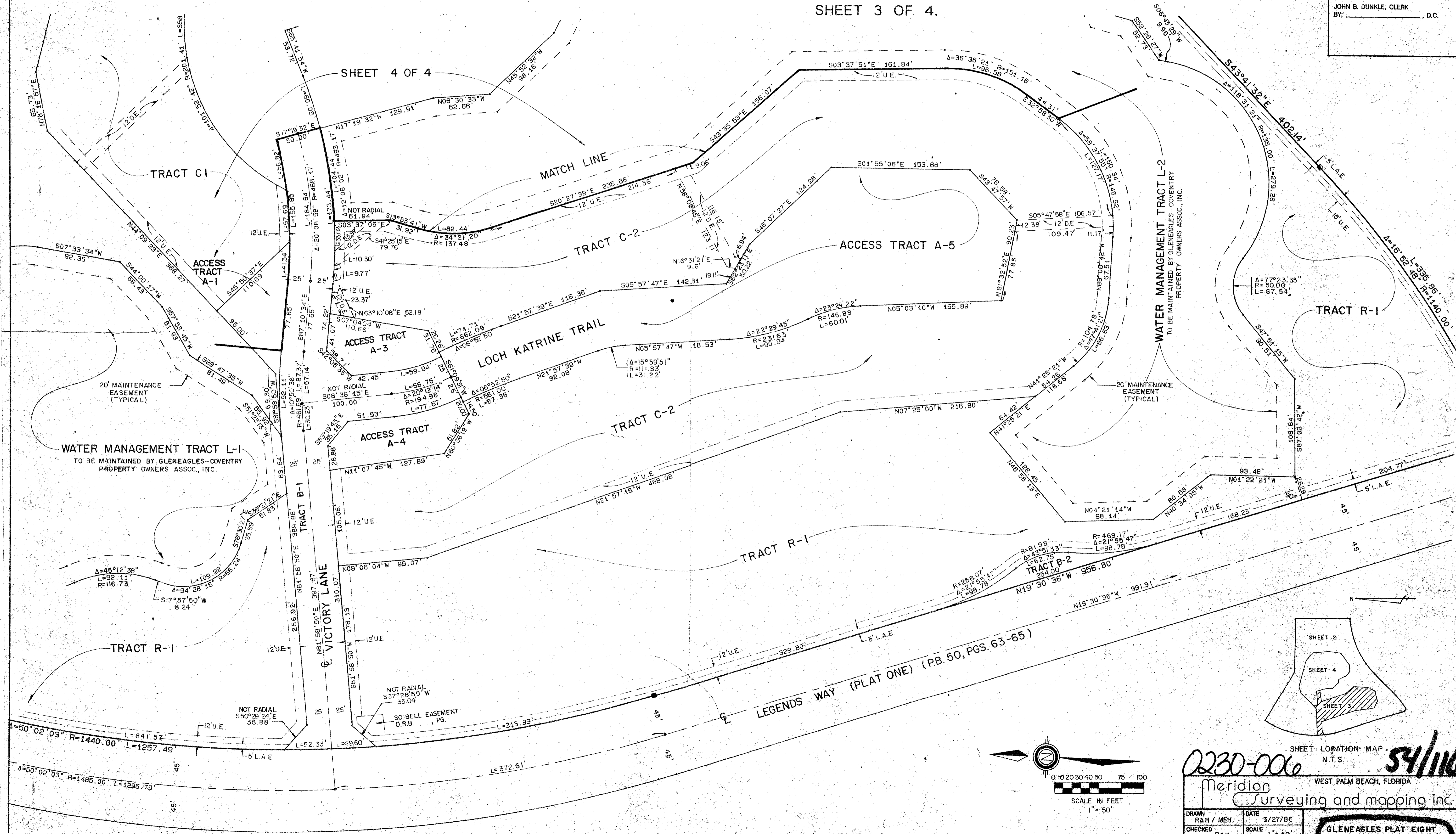
(PARCEL "H", PART OF GLENEAGLES; A P.U.D.)

SITUATE IN SECTIONS 21 AND 28, TOWNSHIP 46 SOUTH, RANGE 42 EAST,
 PALM BEACH COUNTY, FLORIDA, BEING A REPLAT OF A PORTION OF
 GLENEAGLES PLAT ONE, (P.B. 50, PGS. 63 - 65).

SHEET 3 OF 4.

116

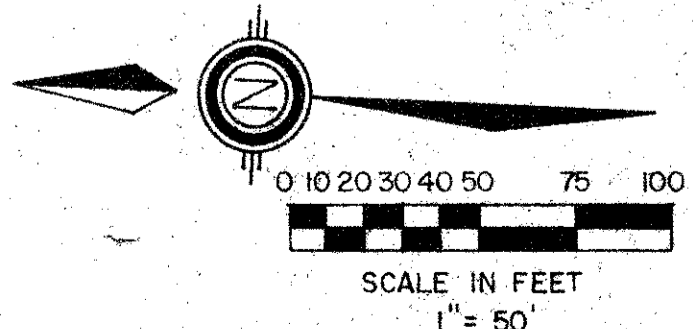
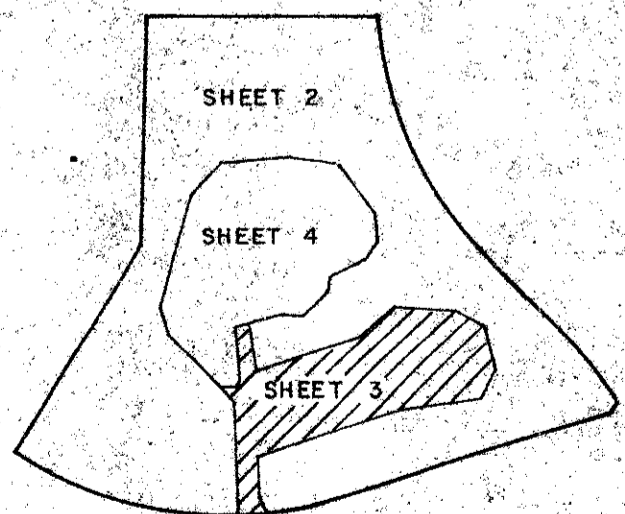
STATE OF FLORIDA
 COUNTY OF PALM BEACH
 THIS PLAT WAS FILED FOR
 RECORD AT _____
 THIS _____ DAY OF _____
 AD, 1986 AND DULY RECORDED
 IN PLAT BOOK _____ ON PAGES
 _____ AND _____
 JOHN B. DUNKLE, CLERK
 BY: _____, D.C.



DRAWING NUMBER

DRAWING NUMBER

DRAWING NUMBER



0230-006

Meridian Surveying and mapping inc. WEST PALM BEACH, FLORIDA

DRAWN RAH / MEH	DATE 3/27/86
CHECKED RAH	SCALE 1" = 50'
DRAWING NO 85-104 PL 8	

GLENEAGLES PLAT EIGHT
 SEC. 21, 28, TWP. 46 S., RGE. 42 E.