

54/156

PALMS WEST MEDICAL CENTER

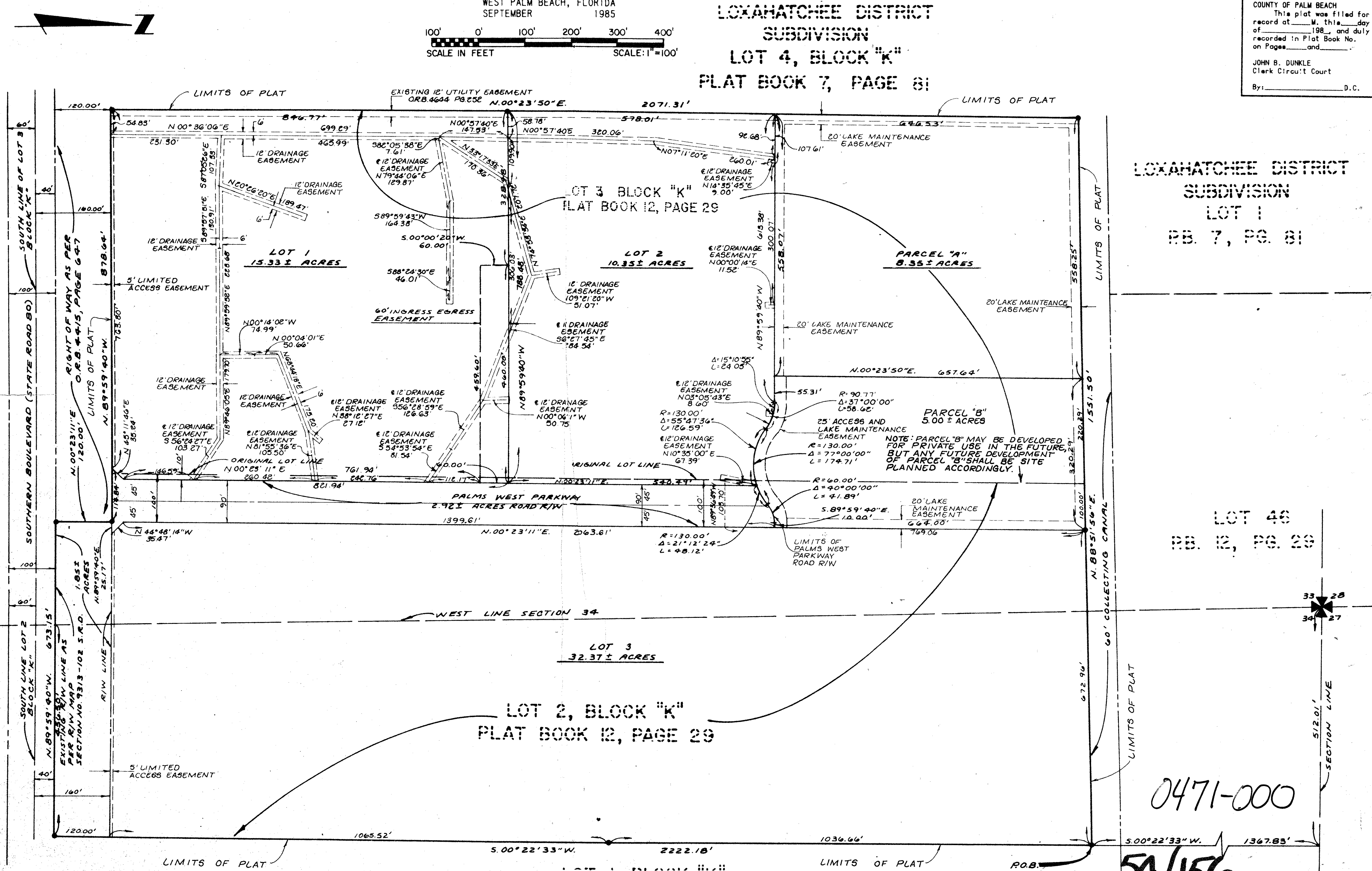
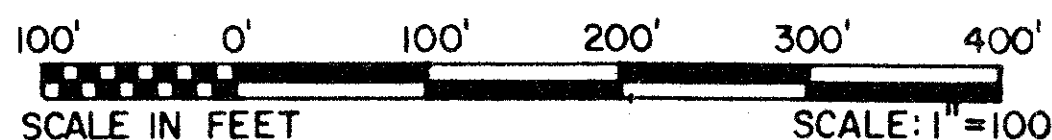
BEING A REPLAT OF PART OF LOXAHATCHEE DISTRICT SUBDIVISION, LOXAHATCHEE GROVES,
RECORDED IN PLAT BOOK 12, PAGE 29, OF THE PUBLIC RECORDS OF PALM BEACH COUNTY, FLORIDA
IN PART OF SECTIONS 33 AND 34, TOWNSHIP 43 SOUTH, RANGE 41 EAST
PALM BEACH COUNTY, FLORIDA
IN TWO SHEETS SHEET NO. 2

GEE & JENSON
ENGINEERS - ARCHITECTS - PLANNERS, INC.
WEST PALM BEACH, FLORIDA
SEPTEMBER 1985

LOXAHATCHEE DISTRICT
SUBDIVISION
LOT 4, BLOCK "K"
PLAT BOOK 7, PAGE 81

156

STATE OF FLORIDA
COUNTY OF PALM BEACH
This plat was filed for
record at _____ M. this _____ day
of _____ 1985, and duly
recorded in Plat Book No. _____
on Pages _____ and _____.
JOHN B. DUNKLE
Clerk Circuit Court
By: _____ D.C.



LOXAHATCHEE DISTRICT
SUBDIVISION
LOT 1
PB. 7, PG. 81

LOT 48
PB. 12, PG. 29

LOT 2, BLOCK "K"
PLAT BOOK 12, PAGE 29

LOT 1, BLOCK "K"
REPLAT OF LOXAHATCHEE DISTRICT SUBDIVISION
PLAT BOOK 12, PAGE 29

0471-000

54/156

Palm West Medical Center

DRAWING NUMBER

DRAWING NUMBER

DRAWING NUMBER