

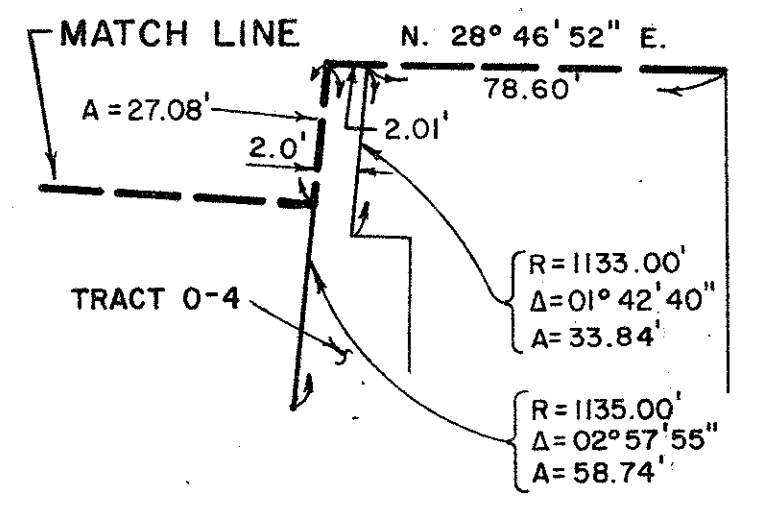
TRACT D

A REPLAT OF ALL OF TRACT D OF THE PLAT OF MISSION BAY, A P.U.D., AS RECORDED IN PLAT BOOK 53, PAGES 112-120 OF THE PUBLIC RECORDS OF PALM BEACH COUNTY, FLORIDA SECTION 13, TOWNSHIP 47 SOUTH, RANGE 41 EAST

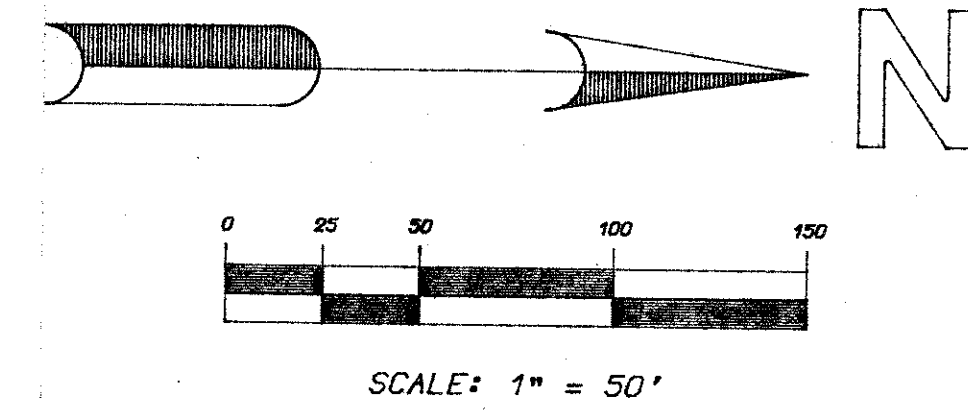
SHEET 3 OF 3 MARCH, 1986

SUBDIVISION * Tract D
 BOOK 54 PAGE 157
 FLOOD ZONE B FIELD MAP # 100B
 ROAD # 68 ZONING
 ZIP CODE 33434
 PUD NAME

KEY MAP N.T.S.

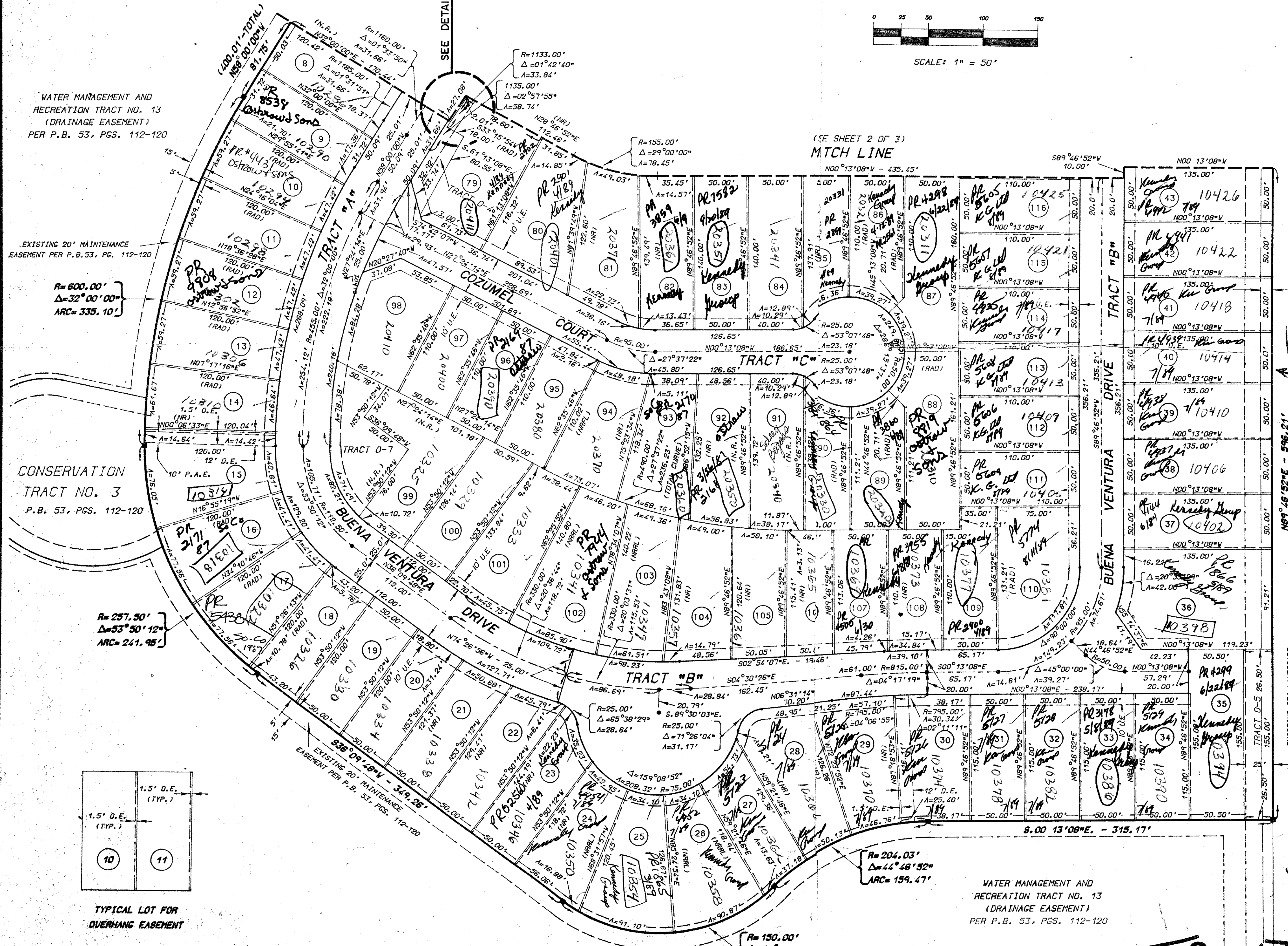


DETAIL 'A' N.T.S.



SURVEYOR'S NOTES

- 1) ALL PRM'S BEAR THE REGISTRATION NUMBER 3143 AND ARE SHOWN THUS - ■
- 2) ALL PCP'S (PERMANENT CONTROL POINTS) ARE SHOWN THUS - ●
- 3) THE BEARINGS SHOWN HEREON ARE BASED ON A BEARING OF N00°54'39"W ON THE EAST LINE OF SECTION 13-47-41.
- 4) ROADWAYS WITHIN THE PLAT OF FLORIDA FRUIT LANDS COMPANY'S SUBDIVISION NO. 2 OF SECTION 13-47-41 WERE ABANDONED PER RESOLUTION NO. R-84-1932, AS RECORDED IN BOOK 4438, PAGES 1770-1773, PUBLIC RECORDS OF PALM BEACH COUNTY, FLORIDA.
- 5) NO BUILDINGS OR ANY KIND OF CONSTRUCTION SHALL BE PLACED ON UTILITY OR DRAINAGE EASEMENTS.
- 6) THERE SHALL BE NO TREES OR SHRUBS PLACED ON UTILITY EASEMENTS WHICH ARE PROVIDED FOR WATER AND SEWER USE OR UPON DRAINAGE EASEMENTS.
- 7) LANDSCAPING ON OTHER UTILITY EASEMENTS SHALL BE ALLOWED ONLY AFTER CONSENT OF ALL UTILITY COMPANIES OCCUPYING SAME.
- 8) (RAD) - INDICATES RADIAL LOT LINE.
- 9) (NR) - INDICATES NON-RADIAL LOT LINE.
- 10) (NRRL) - INDICATES LOT LINE NON-RADIAL TO REAR LOT LINE.
- 11) (NRFL) - INDICATES LOT LINE NON-RADIAL TO FRONT LOT LINE.
- 12) Δ - INDICATES CENTRAL ANGLE.
- 13) A - INDICATES ARC DISTANCE.
- 14) R - INDICATES RADIUS.
- 15) O.E. - INDICATES OVERHANG EASEMENT.
- 16) U.E. - INDICATES UTILITY EASEMENT.
- 17) D.E. - INDICATES DRAINAGE EASEMENT.
- 18) L.A.E. - INDICATES LIMITED ACCESS EASEMENT.
- 19) P.A.E. - INDICATES PEDESTRIAN ACCESS EASEMENT.
- 20) WHERE A DRAINAGE EASEMENT AND A PEDESTRIAN ACCESS EASEMENT CROSS, THE DRAINAGE EASEMENT SHALL TAKE PRECEDENCE OVER THE PEDESTRIAN ACCESS EASEMENT.



BOCA GREEN PLT NO. 2 P.B. 39, PGS. 161-163

EXISTING 20' LANDSCAPE BUFFER EASEMENT PER P.B. 53, PGS. 112-120

WATER MANAGEMENT AND RECREATION TRACT NO. 13 (DRAINAGE EASEMENT) PER P.B. 53, PGS. 112-120

LAWSON, NOBLE & ASSOCIATES, INC.

TRACT D REPLAT

0454-303

THIS INSTRUMENT PREPARED BY LEO E. NOBLE P.L.S. 3143 STATE OF FLORIDA

ENGINEERS PLANNERS SURVEYORS BOYNTON BEACH, FLORIDA

ADD. BY: [Signature]

DRAWING NUMBER

DRAWING NUMBER

DRAWING NUMBER

PLAN HOLD CORPORATION • IRVINE, CALIFORNIA RECORDED BY NUMBER 07348

PLAN HOLD CORPORATION • IRVINE, CALIFORNIA RECORDED BY NUMBER 07348

PLAN HOLD CORPORATION • IRVINE, CALIFORNIA RECORDED BY NUMBER 07348

PLAN HOLD CORPORATION • IRVINE, CALIFORNIA RECORDED BY NUMBER 07348