

DRAWING NUMBER
55/12

DRAWING NUMBER
PLAN HOLD CORPORATION • IRVINE, CALIFORNIA
RECORDED BY NUMBER 07348

DRAWING NUMBER
PLAN HOLD CORPORATION • IRVINE, CALIFORNIA
RECORDED BY NUMBER 07348

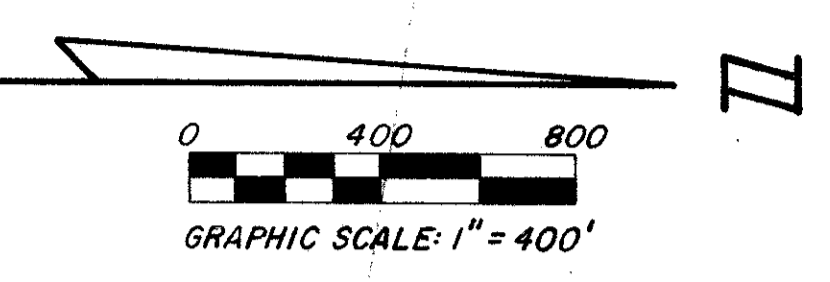
DRAWING NUMBER
PLAN HOLD CORPORATION • IRVINE, CALIFORNIA
RECORDED BY NUMBER 07348

ABERDEEN - PLAT NO. 2

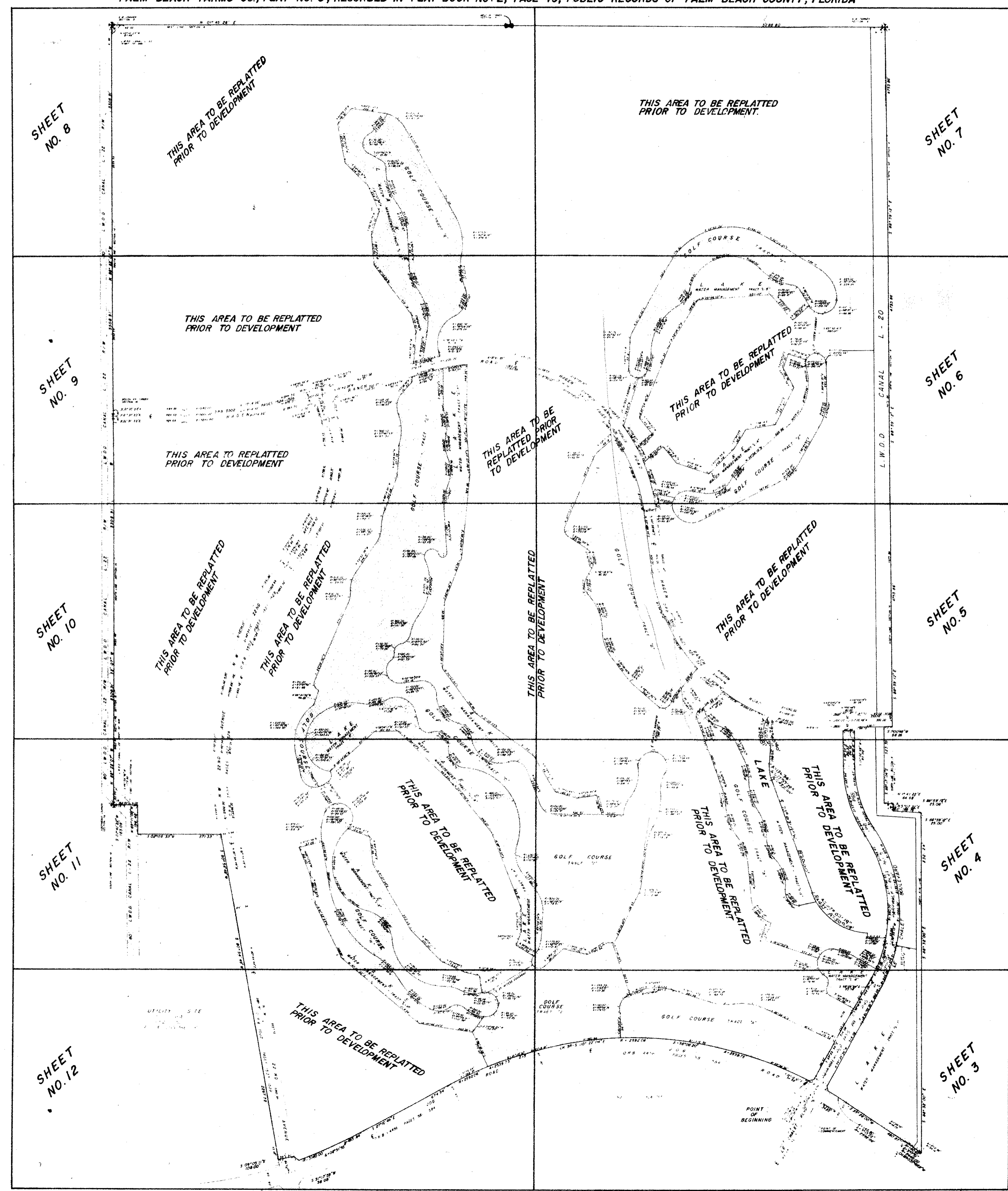
A PORTION OF A (P.U.D.)
SECTIONS 15 & 16, TOWNSHIP 45 SOUTH, RANGE 42 EAST
PALM BEACH COUNTY, FLORIDA - AUG., 1986

BEING A REPLAT OF A PORTION OF BLOCK 47 AND THE SCHOOL TRACT LYING IN SECTION 16, TOWNSHIP 45 SOUTH, RANGE 42 EAST,
PALM BEACH FARMS CO., PLAT NO. 3, RECORDED IN PLAT BOOK NO. 2, PAGE 49, PUBLIC RECORDS OF PALM BEACH COUNTY, FLORIDA

12



STATE OF FLORIDA
COUNTY OF PALM BEACH
This Plat was filed for record at _____ M.
this _____ day of _____
19 _____, and duly recorded in Plat Book No. _____
on page _____
JOHN B. DUNKLE, Clerk Circuit Court
By _____, D.C.



55/12

0270-306

ROSSI AND MALAVASI ENGINEERS, INC. WEST PALM BEACH, FLORIDA		INDEX MAP OF SHEETS ABERDEEN PLAT NO. 2 IN 12 SHEETS SHEET NO. 2	
Date	AUGUST, 1986	Designed	D. FREDERICK
Drawn	D. FREDERICK	Scale	1" = 400'
Checked	D. FREDERICK	Job No.	
File No.		Sheet	2 of 12