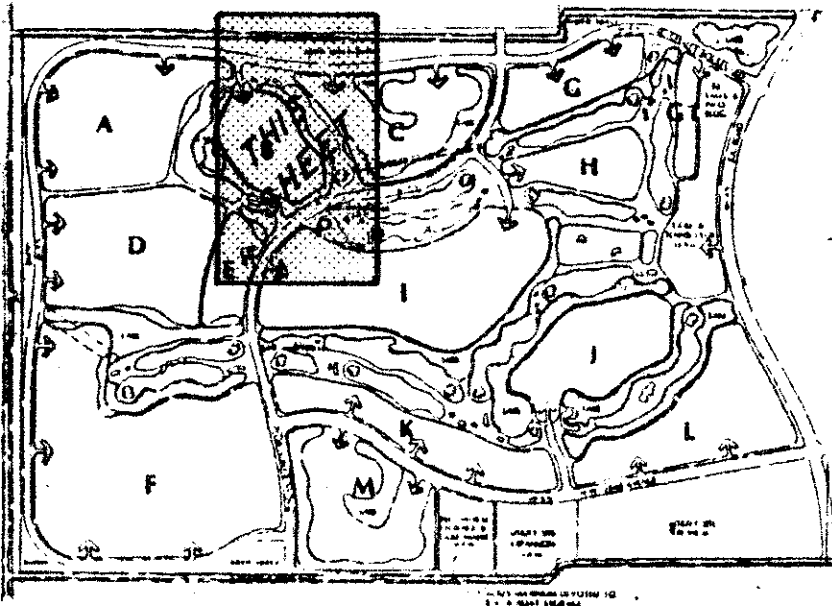


DRAWING NUMBER
55/16



ABERDEEN - PLAT NO. 2

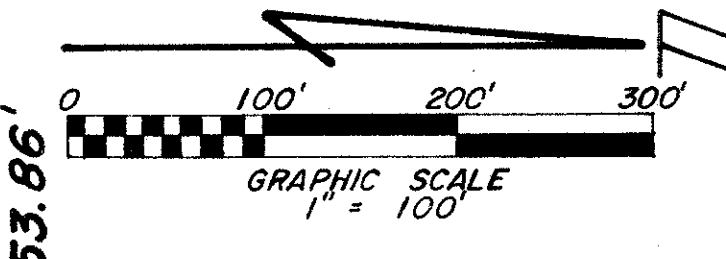
A PORTION OF A (P.U.D.)

SECTIONS 15 & 16, TOWNSHIP 45, SOUTH, RANGE 42 EAST

PALM BEACH COUNTY, FLORIDA - AUG., 1986
BEING A REPLAT OF A PORTION OF BLOCK 47 AND THE SCHOOL TRACT LYING IN SECTION 16, TOWNSHIP 45 SOUTH, RANGE 42 EAST,
PALM BEACH FARMS CO. PLAT NO. 3, RECORDED IN PLAT BOOK 2, PAGE 49, PUBLIC RECORDS OF PALM BEACH COUNTY, FLORIDA
SEE SHEET NO. 7

18

STATE OF FLORIDA)
COUNTY OF PALM BEACH) ss
This Plat was filed for record at _____ M.
this _____ day of _____
19 _____ and duly recorded in Plat Book No. _____
on page _____
JOHN B. DUNKLE, Clerk Circuit Court
By _____, D.C.



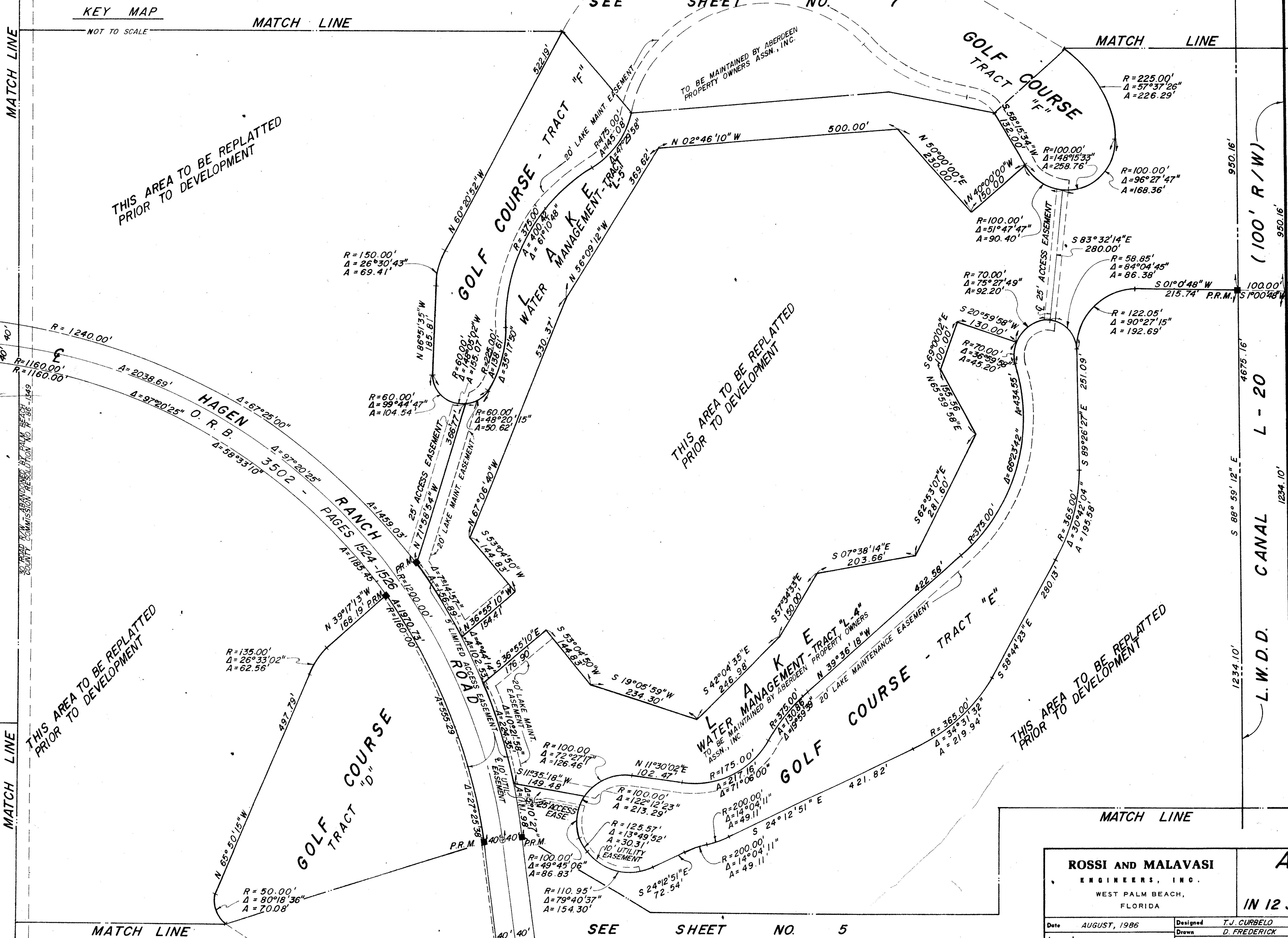
DRAWING NUMBER

DRAWING NUMBER

DRAWING NUMBER

SEE SHEET NO. 9

SEE SHEET NO. 5



THIS AREA TO BE REPLATTED
PRIOR TO DEVELOPMENT

THIS AREA TO BE REPLATTED
PRIOR TO DEVELOPMENT

THIS AREA TO BE REPLATTED
PRIOR TO DEVELOPMENT

THIS AREA TO BE REPLATTED
PRIOR TO DEVELOPMENT

ROSSI AND MALAVASI
ENGINEERS, INC.
WEST PALM BEACH,
FLORIDA

ABERDEEN
PLAT NO. 2
IN 12 SHEETS SHEET NO. 6

Date	AUGUST, 1986	Designed	T.J. CURBELO	Scale	1" = 100'	Sheet	
Approved		Drawn	D. FREDERICK	Job No.		6	of 12
		Checked		File No.			

55/16
0270-306