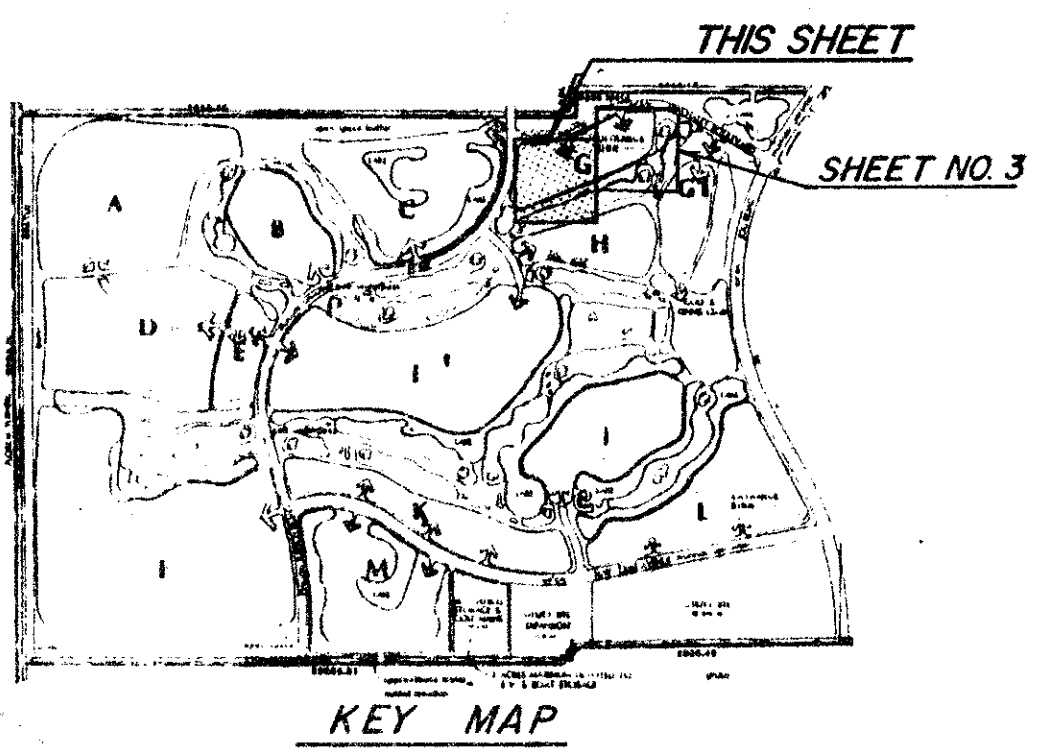


55/24

DRAWING NUMBER

DRAWING NUMBER

DRAWING NUMBER



ABERDEEN - PLAT NO. 3

A PORTION OF A (P.U.D.)

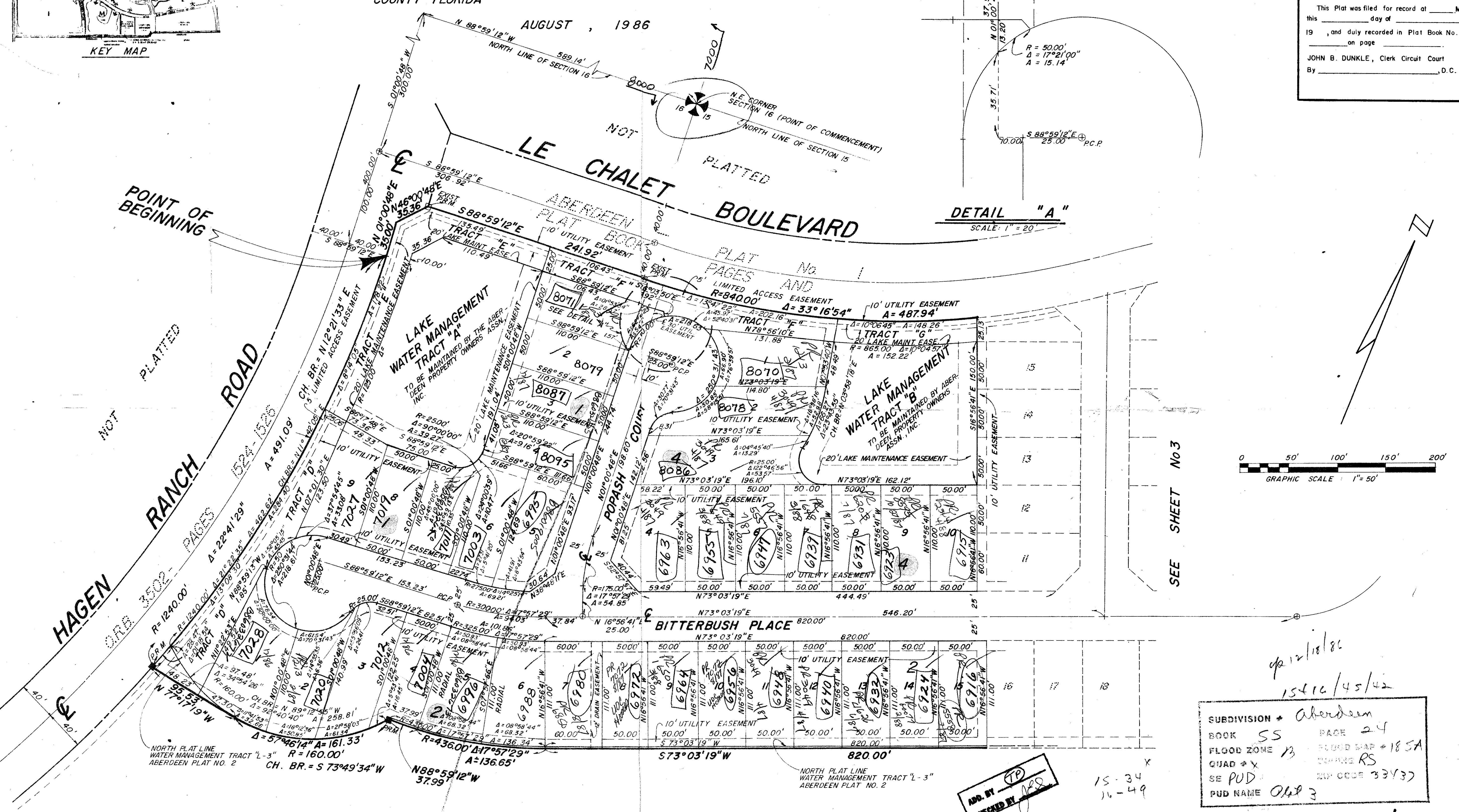
SECTIONS 15 & 16, TOWNSHIP 45 SOUTH, RANGE 42 EAST

BEING A REPLAT OF A PORTION OF ABERDEEN - PLAT NO. 2 RECORDED IN PLAT BOOK PAGES THRU , PUBLIC RECORDS OF PALM BEACH COUNTY FLORIDA

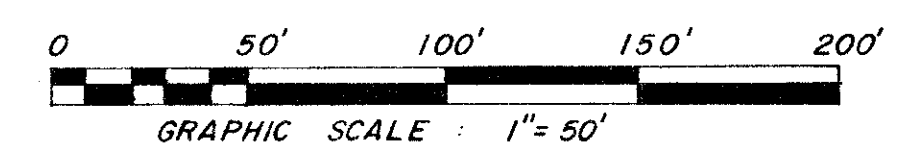
AUGUST, 1986

24

STATE OF FLORIDA
COUNTY OF PALM BEACH
This Plat was filed for record at _____ M.
this _____ day of _____
19 _____, and duly recorded in Plat Book No. _____
on page _____
JOHN B. DUNKLE, Clerk Circuit Court
By _____, D.C.



DETAIL "A"
SCALE: 1" = 20'



4/12/18/86
15416/45/42
SUBDIVISION * Aberdeen
BOOK 55 PAGE 24
FLOOD ZONE 13 FLOOD MAP #185A
QUAD # X SQUARE RS
SE PUD 2ND ORDER 33433
PUD NAME 0483

APP. BY [Signature]
CHECKED BY [Signature]

0270-005 TURNOUT REQUIRED 55/24

ROSSI AND MALAVASI ENGINEERS, INC. WEST PALM BEACH, FLORIDA		ABERDEEN PLAT NO. 3 IN 3 SHEETS SHEET NO 2	
Date	AUGUST, 1986	Designed	T.J. CURBELO
Drawn	P.B. MORALES	Scale	1" = 50'
Checked		Job No.	4236-85
		File No.	5-1345-001
		Sheet	2 of 3