

55/25

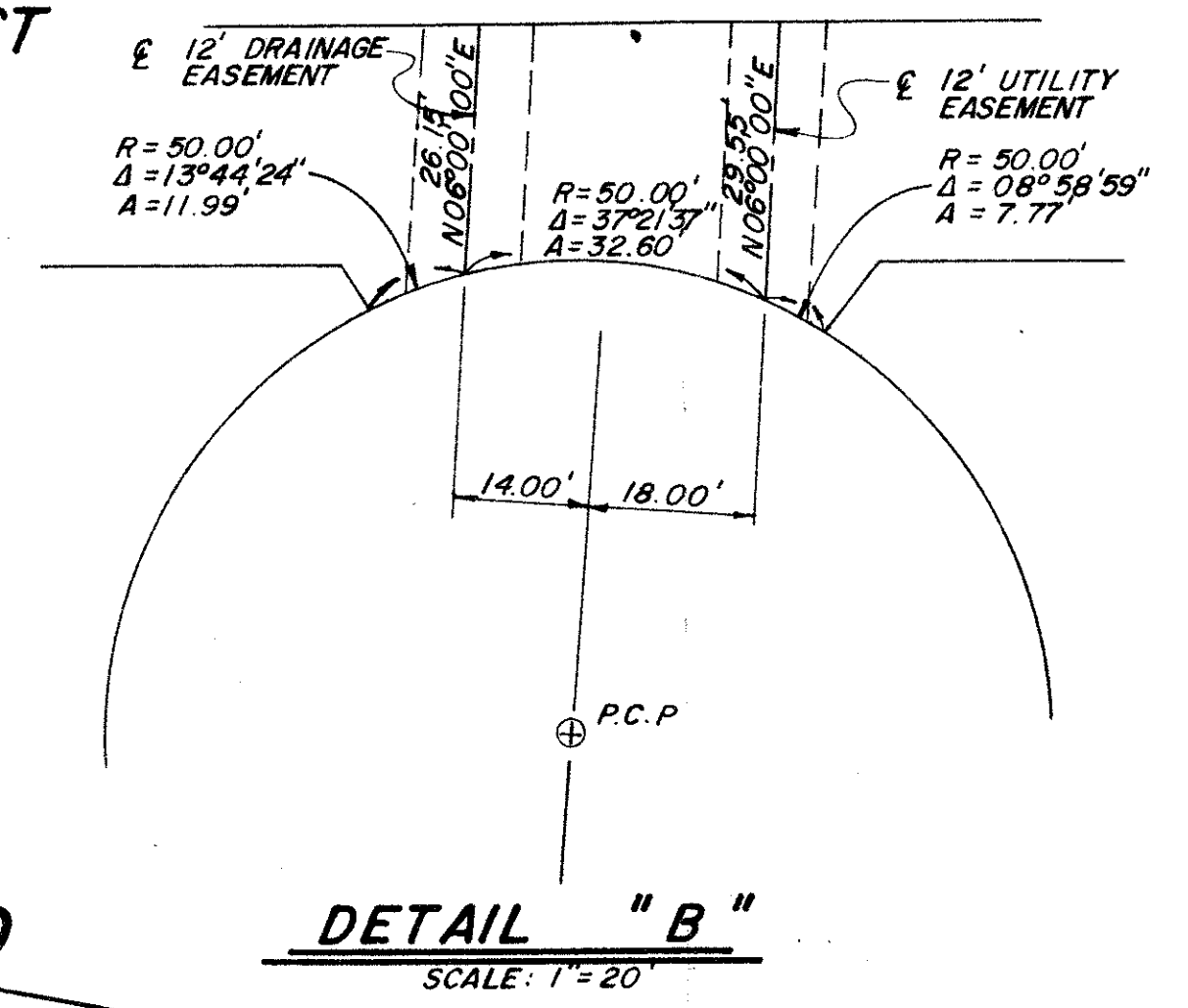
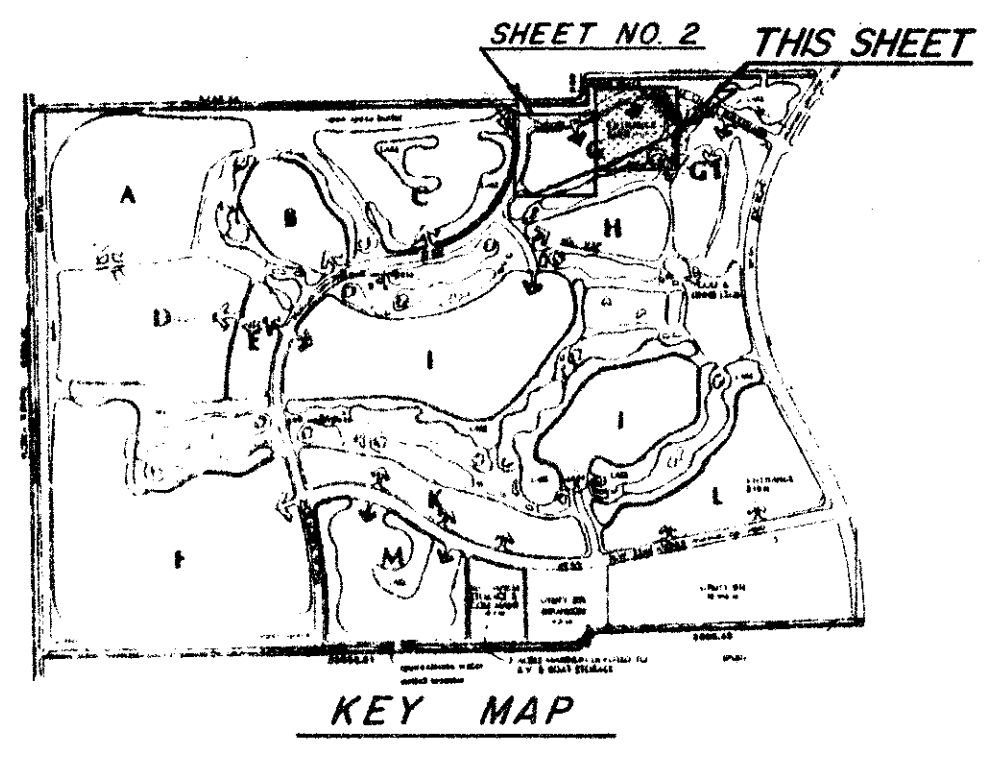
25

ABERDEEN - PLAT NO. 3

A PORTION OF A (P.U.D.)

SECTIONS 15 & 16, TOWNSHIP 45 SOUTH, RANGE 42 EAST

BEING A REPLAT OF A PORTION OF ABERDEEN - PLAT NO. 2 RECORDED IN PLAT BOOK PAGES THRU , PUBLIC RECORDS OF PALM BEACH COUNTY FLORIDA

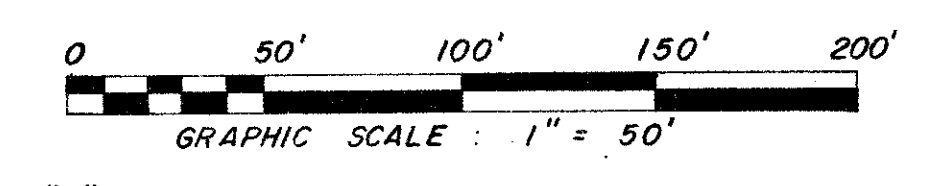
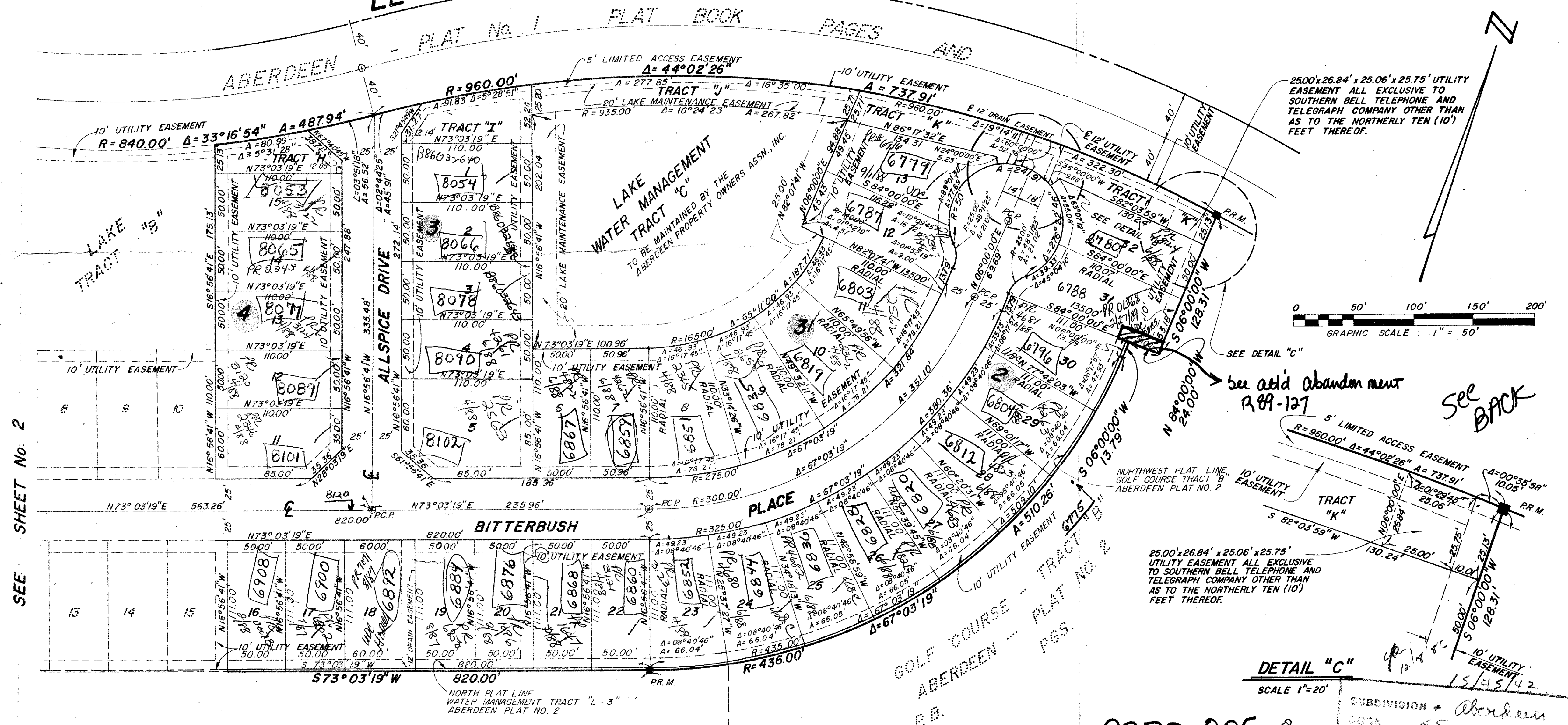


STATE OF FLORIDA
COUNTY OF PALM BEACH
This Plat was filed for record at _____ M.
this _____ day of _____
19 _____, and duly recorded in Plat Book No. _____
on page _____
JOHN B. DUNKLE, Clerk Circuit Court
By _____, D.C.

NOT PLATTED

LE CHALET BOULEVARD

DETAIL "B"
SCALE: 1" = 20'



SEE DETAIL "C"
see add abandon ment
R 89-127

see BACK

25.00'x26.84' x 25.06' x 25.75'
UTILITY EASEMENT ALL EXCLUSIVE TO SOUTHERN BELL TELEPHONE AND TELEGRAPH COMPANY OTHER THAN AS TO THE NORTHERLY TEN (10) FEET THEREOF.

DETAIL "C"
SCALE 1" = 20'

LAKE - WATER MANAGEMENT TRACT "L - 3"
ABERDEEN - PLAT NO. 2
P.B. PGS.

ADD. BY TP
CHECKED BY J. 22

0270-005
55/25

SUBDIVISION * Aberdeen
BOOK 55 PAGE 25
FLOOD CODE 15
GRID # 34 FLOOD MAP # 185
POD 12 FLOOD RS
POD NAME Plat 3 ZIP CODE 33437

ROSSI AND MALAVASI ENGINEERS, INC. WEST PALM BEACH, FLORIDA		ABERDEEN PLAT NO. 3 IN 3 SHEETS SHEET NO. 3					
Date	AUGUST, 1985	Designed	T.J. CURBELO	Scale	1" = 50'	Sheet	
Approved		Drawn	P.B. MORALES	Job No.	4236-85		3 of 3
		Checked		File No.	S-1345-001		

DRAWING NUMBER

DRAWING NUMBER

DRAWING NUMBER

PLAN HOLD CORPORATION • IRVINE, CALIFORNIA
RECORDED BY NUMBER 02348

PLAN HOLD CORPORATION • IRVINE, CALIFORNIA
RECORDED BY NUMBER 02348

PLAN HOLD CORPORATION • IRVINE, CALIFORNIA
RECORDED BY NUMBER 02348

SEE SHEET No. 2

SEE SHEET No. 2

SEE SHEET No. 2