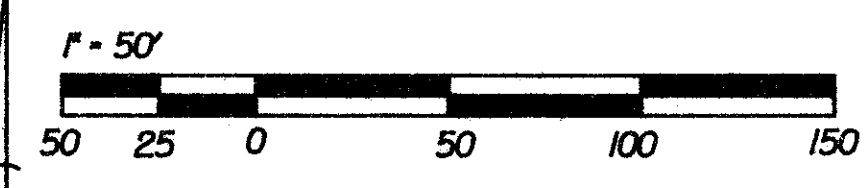
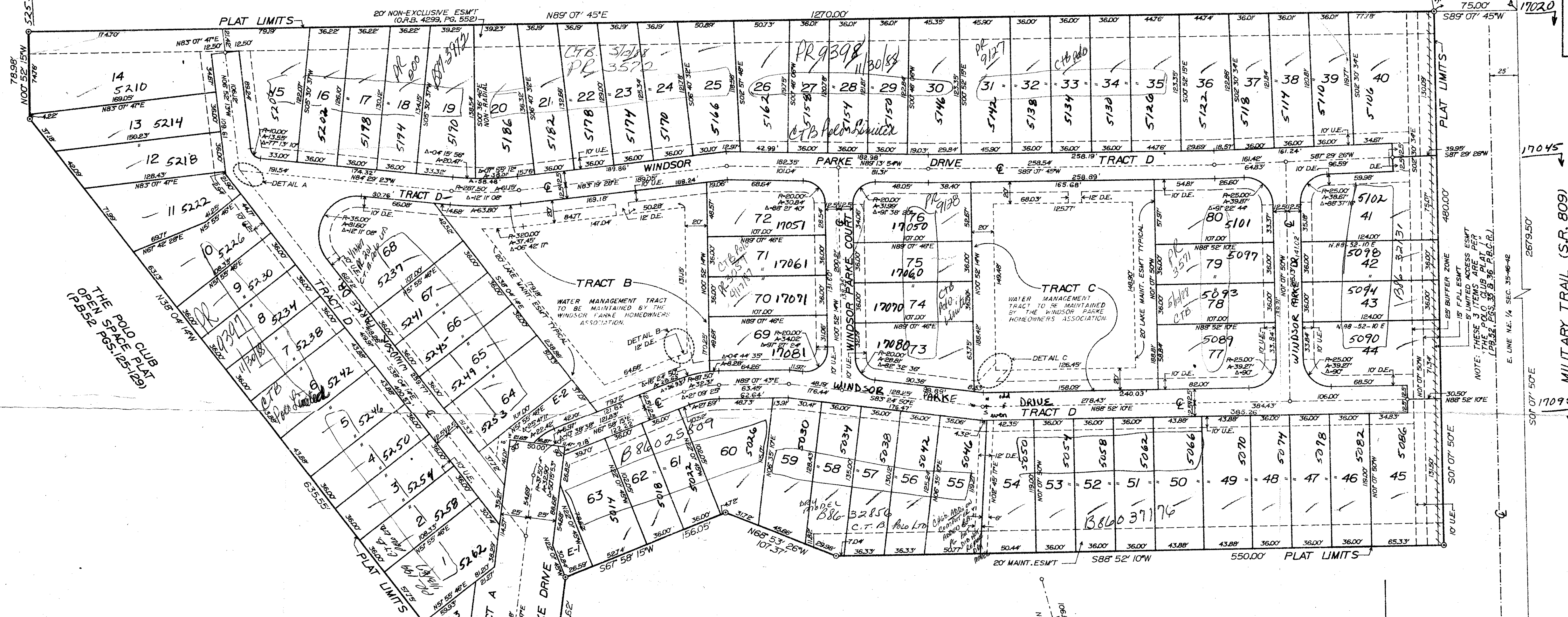


WINDSOR PARKE AT THE POLO CLUB,
A REPLAT OF A PORTION OF TRACT 1 "THE POLO CLUB PLAT 1"
(PLAT BOOK 52 PAGES 35 & 36 P.B.C.R.)
SITUATE IN SECTION 35, TOWNSHIP 46 SOUTH, RANGE 42 EAST,
PALM BEACH COUNTY, FLORIDA
JULY 1986
PART OF A P.U.D.



L.W.D.D. L-38 CANAL R/W
(O.R.B. 4299, PG. 552)

SHEET 2 OF 2 SHEETS



THE POLO CLUB
OPEN SPACE PLAT
(P.B. 52 PGS. 125-129)

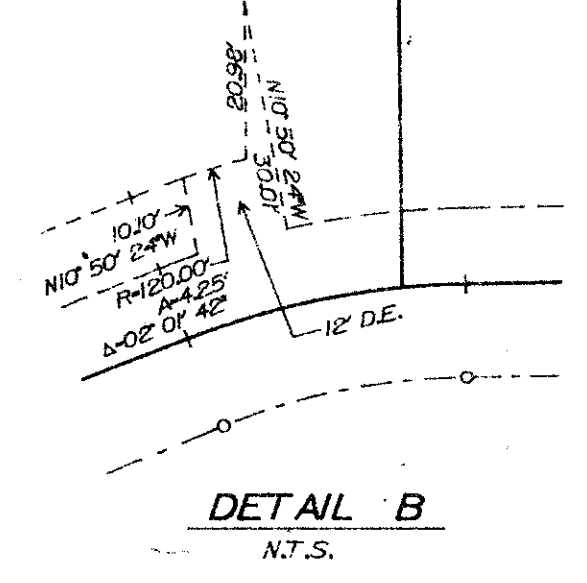
THE POLO CLUB
OPEN SPACE PLAT
(P.B. 52 PGS. 125-129)

SURVEYOR'S NOTES

1. BEARINGS SHOWN HEREON ARE BASED UPON THE POLO CLUB OPEN SPACE PLAT ONE, P.B. 52 PGS. 125-129
2. (P.M.S.) - INDICATES P.R.M.'S, PERMANENT REFERENCE MONUMENTS SET, NUMBER 3512, UNLESS OTHERWISE NOTED.
3. (P.C.P.'S) - INDICATES P.C.P.'S, PERMANENT CONTROL POINTS.
4. D.E. - INDICATES DRAINAGE EASEMENT
5. U.E. - INDICATES UTILITY EASEMENT
6. 24 - INDICATES LOT NUMBER
7. a. NO BUILDINGS OR ANY KIND OF CONSTRUCTION SHALL BE PLACED ON UTILITY OR DRAINAGE EASEMENTS;
b. NO STRUCTURES, TREES, OR SHRUBS SHALL BE PLACED ON DRAINAGE OR MAINTENANCE EASEMENTS;
c. LANDSCAPING ON UTILITY EASEMENTS IS SUBJECT TO THE APPROVAL OF ALL UTILITIES OCCUPYING SAME.
d. WHERE DRAINAGE AND UTILITY EASEMENTS INTERSECT, DRAINAGE SHALL TAKE PRECEDENCE.
8. THIS PLAT CONFORMS TO THE "MINIMUM TECHNICAL STANDARDS FOR LAND SURVEYING IN THE STATE OF FLORIDA", AS ADOPTED BY THE DEPARTMENT OF PROFESSIONAL REGULATION, BOARD OF LAND SURVEYORS (CHAPTER 2144-F FLORIDA ADMINISTRATIVE CODE).

DETAIL A
N.T.S.

DETAIL C
N.T.S.



DETAIL B
N.T.S.

SUBDIVISION Windsor Parke
BOOK 55 PAGE 35
FLOOD ZONE B FLOOD MAP # 2208
QUAD # 37 ZONING RS
SE PUD ZIP CODE 33431
PUD NAME The Polo Club

APPROVED BY (TP)
CHECKED BY (BT)

55/35
0436-306

DRAWING NUMBER

DRAWING NUMBER

DRAWING NUMBER