

DRAWING NUMBER
55/38

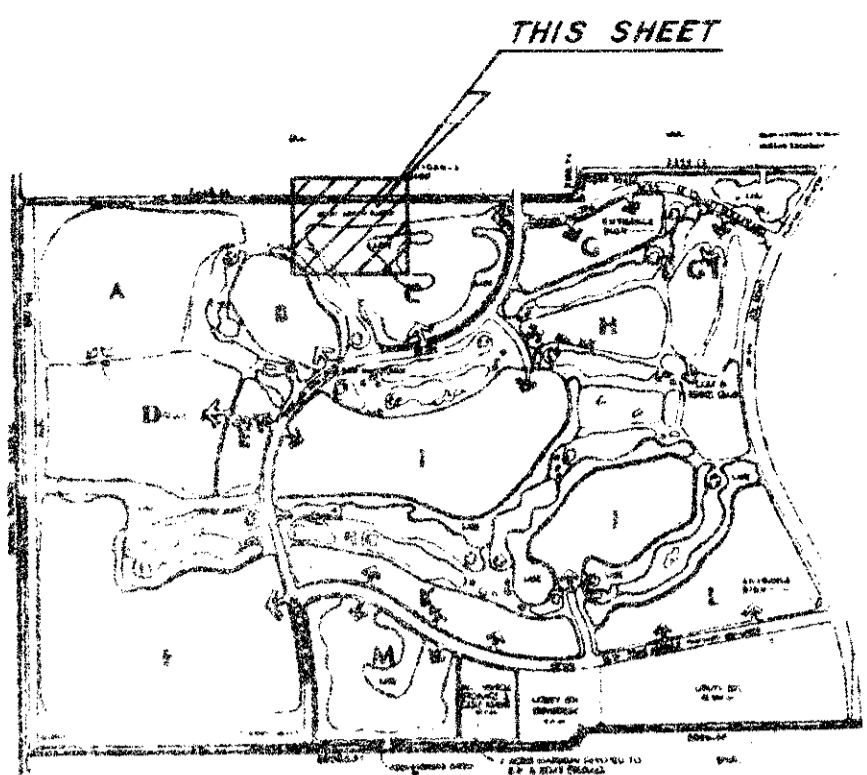
ABERDEEN - PLAT NO. 4

A PORTION OF A (P.U.D)

SECTION 16, TOWNSHIP 45 SOUTH, RANGE 42 EAST

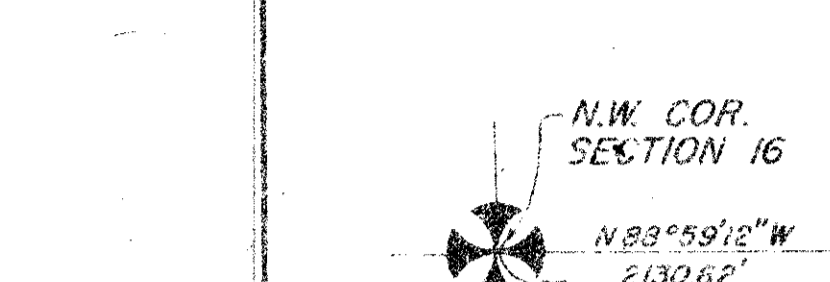
BEING A REPLAT OF A PORTION OF ABERDEEN - PLAT NO. 2 RECORDED IN
PLAT BOOK 55, PAGES 11 THRU 22, PUBLIC RECORDS OF PALM BEACH
COUNTY FLORIDA

PALM BEACH COUNTY, FLORIDA - AUGUST, 1986



38

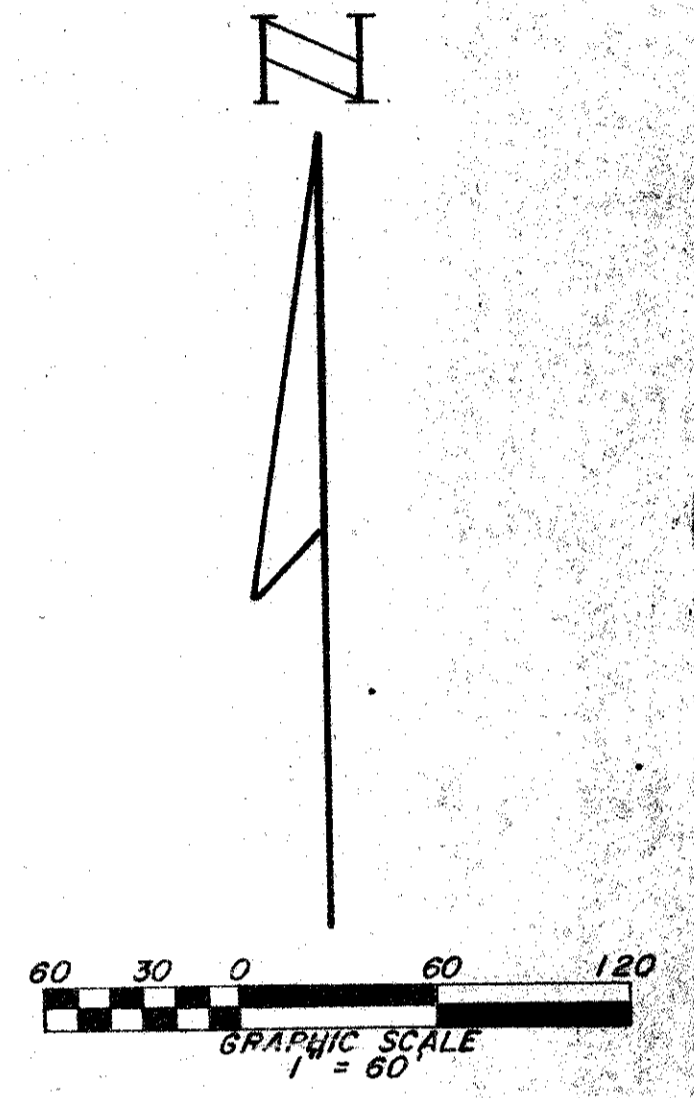
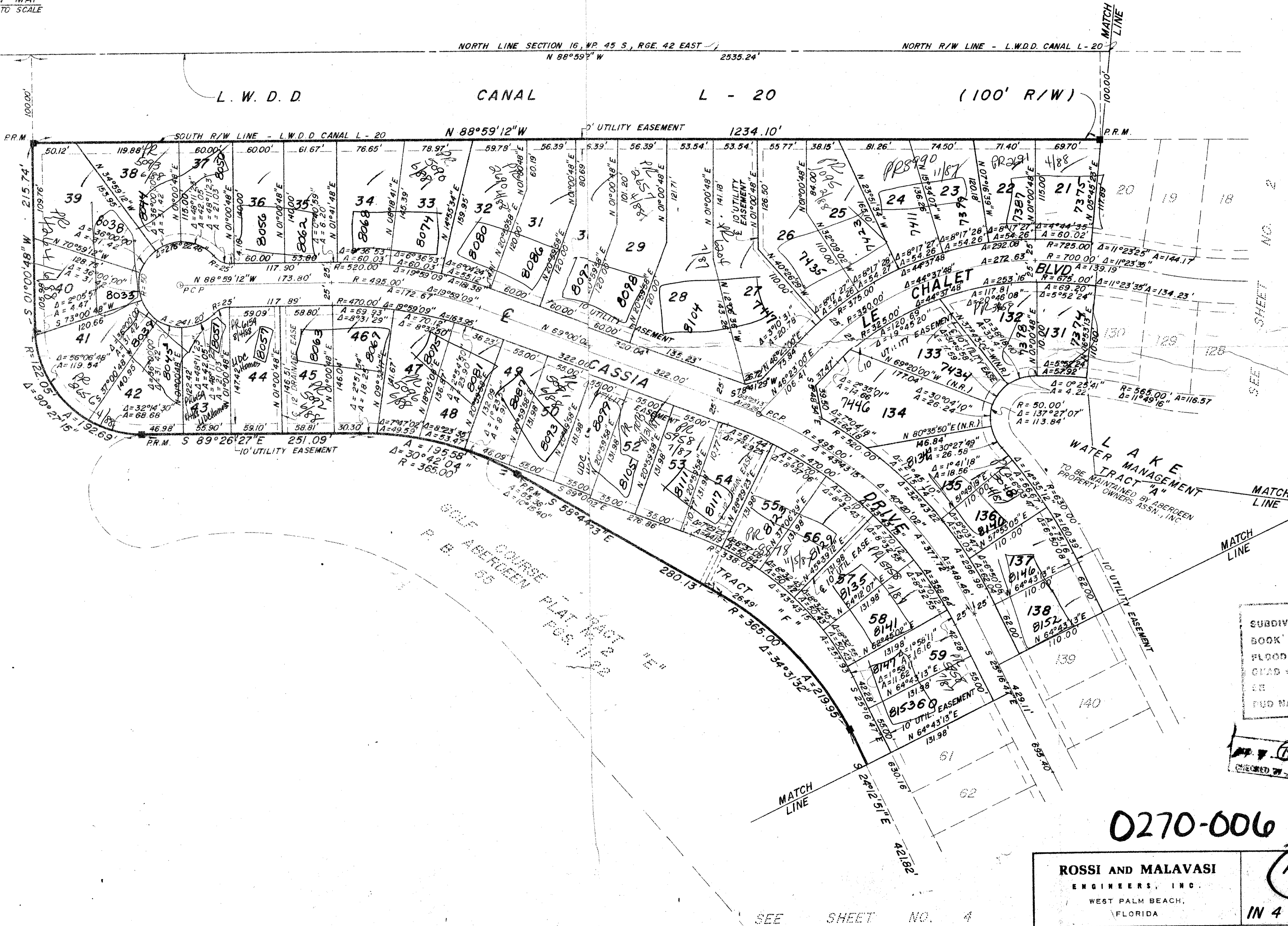
STATE OF FLORIDA
COUNTY OF PALM BEACH
This Plat was filed for record at _____ M.
this _____ day of _____
19 _____ and duly recorded in Plat Book No. _____
on page _____
JOHN B. DUNKLE, Clerk Circuit Court
By _____, D.C.



DRAWING NUMBER

DRAWING NUMBER

DRAWING NUMBER



NOTE: ALL LOT LINES ARE RADIAL UNLESS OTHERWISE SHOWN THUSLY (N.R.)

Subdivision * Aberdeen
BOOK 55 PAGE 38
FLOOD ZONE B FLOOD MAP # 185A
CHAD # 49 TOWNING
PUD NAME Plat 4

TURNOUT REQUIRED
RECORDED BY BT
55/38

0270-006

ROSSI AND MALAVASI
ENGINEERS, INC.
WEST PALM BEACH,
FLORIDA

ABERDEEN
PLAT NO. 4
IN 4 SHEETS SHEET NO. 3

Date	AUGUST, 1986	Designed	T. J. CURBELO	Scale	1" = 60'	Sheet	
Approved		Drawn	D. FREDERICK	Job No.			
		Checked		File No.			

SEE SHEET NO. 4