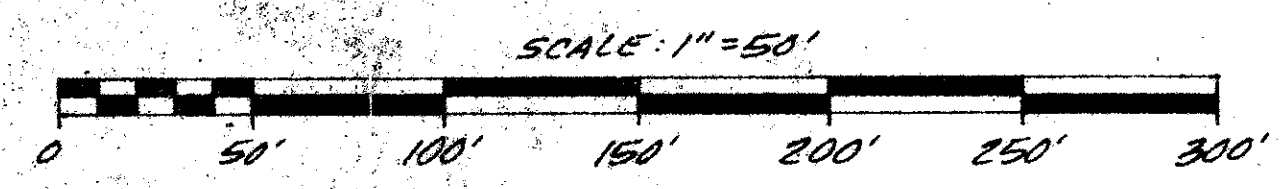


55/84

84

PLAT OF SUMMIT PINES UNIT FOUR A.P.U.D.

SECTION 11, TOWNSHIP 44 SOUTH, RANGE 42 EAST
PALM BEACH COUNTY, FLORIDA



SHEET 2 OF 2 SHEETS

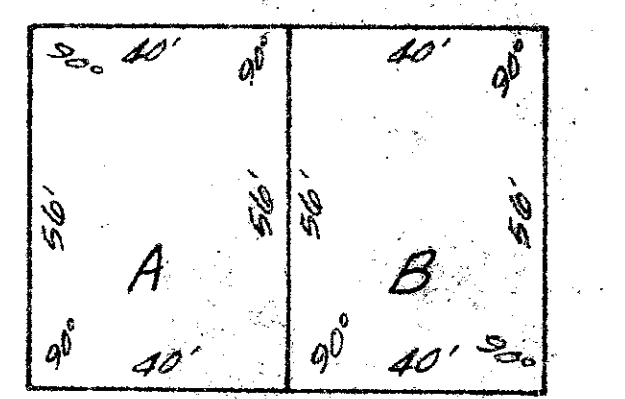
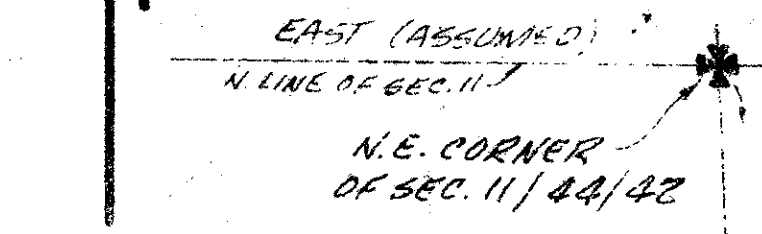
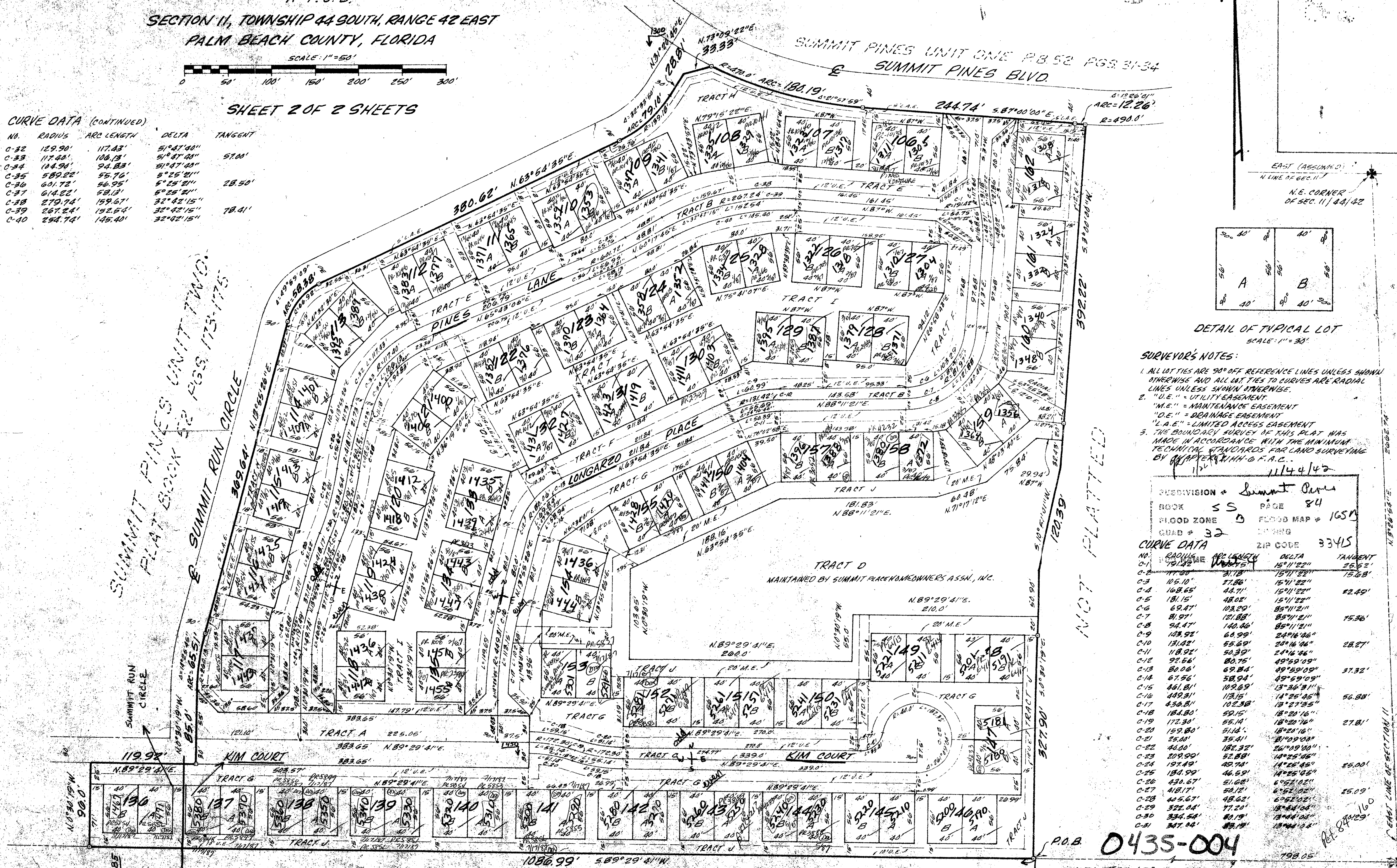
CURVE DATA (CONTINUED)

NO.	RADIUS	ARC LENGTH	DELTA	TANGENT
C-32	129.90'	117.43'	51°47'40"	
C-33	117.48'	106.13'	51°47'40"	57.01'
C-34	104.94'	94.83'	51°47'40"	
C-35	589.22'	55.76'	5°25'21"	
C-36	601.72'	56.95'	5°25'21"	28.50'
C-37	614.82'	58.13'	5°25'21"	
C-38	279.74'	159.67'	32°42'15"	
C-39	267.24'	152.54'	32°42'15"	78.41'
C-40	254.74'	145.40'	32°42'15"	

DRAWING NUMBER

DRAWING NUMBER

DRAWING NUMBER



DETAIL OF TYPICAL LOT
SCALE: 1" = 30'

- SURVEYOR'S NOTES:**
- ALL LOT TIES ARE 90° OFF REFERENCE LINES UNLESS SHOWN OTHERWISE AND ALL LOT TIES TO CURVES ARE RADIAL LINES UNLESS SHOWN OTHERWISE.
 - "U.E." = UTILITY EASEMENT
"M.E." = MAINTENANCE EASEMENT
"D.E." = DRAINAGE EASEMENT
"L.A.E." = LIMITED ACCESS EASEMENT
 - THE BOUNDARY SURVEY OF THIS PLAT WAS MADE IN ACCORDANCE WITH THE MINIMUM TECHNICAL STANDARDS FOR LAND SURVEYING BY CHAPTER 1111-G F.A.C.

Subdivision - Summit Pines
 BOOK 55 PAGE 84
 FLOOD ZONE D FLOOD MAP # 165D
 QUAD # 32
 ZIP CODE 33415

CURVE DATA

NO.	RADIUS	ARC LENGTH	DELTA	TANGENT
C-1	191.22'	151.12'	15°11'22"	25.52'
C-2	177.00'	141.78'	15°11'22"	15.68'
C-3	165.10'	127.86'	15°11'22"	
C-4	168.65'	144.71'	15°11'22"	42.49'
C-5	181.15'	148.02'	15°11'22"	
C-6	69.47'	103.29'	85°11'21"	
C-7	81.97'	121.88'	85°11'21"	15.36'
C-8	94.47'	140.46'	85°11'21"	
C-9	108.97'	160.99'	24°16'46"	
C-10	131.42'	182.59'	24°16'46"	28.27'
C-11	148.92'	206.17'	24°16'46"	
C-12	172.30'	231.75'	49°59'09"	37.32'
C-13	200.66'	260.34'	49°59'09"	
C-14	234.98'	292.91'	49°59'09"	
C-15	275.26'	329.47'	13°26'31"	
C-16	321.51'	370.03'	13°26'31"	56.88'
C-17	373.73'	415.59'	13°26'31"	
C-18	432.00'	466.15'	18°20'16"	
C-19	497.30'	521.71'	18°20'16"	27.81'
C-20	569.60'	582.27'	18°20'16"	
C-21	648.90'	647.83'	21°09'02"	
C-22	735.20'	718.39'	21°09'02"	
C-23	828.50'	793.95'	21°09'02"	
C-24	928.80'	874.51'	14°25'45"	25.00'
C-25	1036.10'	960.07'	14°25'45"	
C-26	1150.40'	1050.63'	14°25'45"	
C-27	1271.70'	1146.19'	6°52'12"	25.09'
C-28	1400.00'	1246.75'	6°52'12"	
C-29	1536.30'	1352.31'	18°48'04"	
C-30	1680.60'	1462.87'	18°48'04"	
C-31	1832.90'	1578.43'	18°48'04"	

P.O.B. 0435-004

ADD. BY [Signature]
 CHECKED BY [Signature]

SUMMIT PINES UNIT 4 55/84 SHEET 2 OF 2 SHEETS