

55/93

A REPLAT OF TRACT 84, BLOCK 80 · PALM BEACH FARMS CO. PLAT NO: 3 · P.B. 2, PGS. 45 - 54 P.B.C.

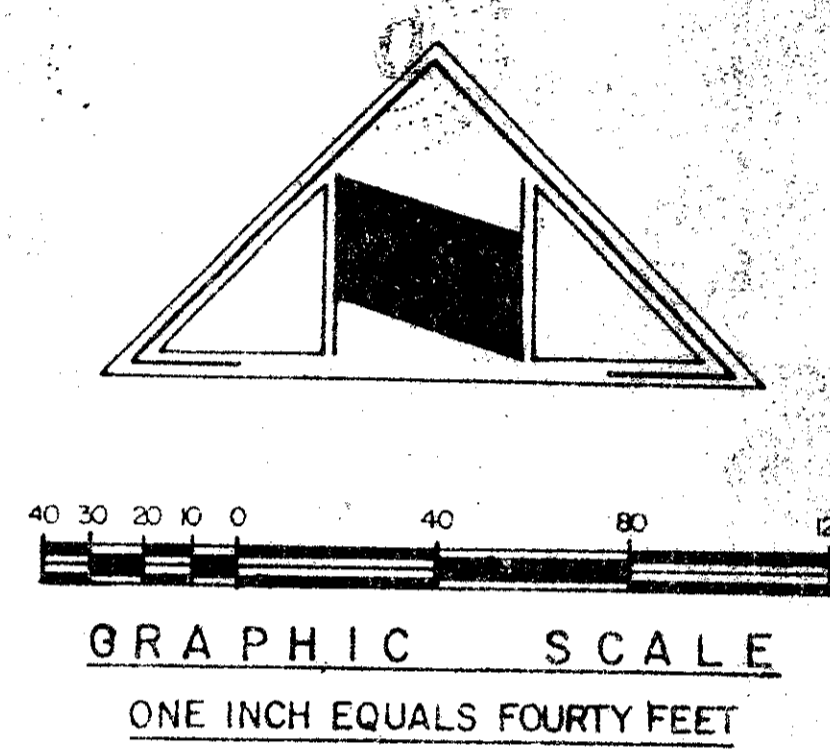
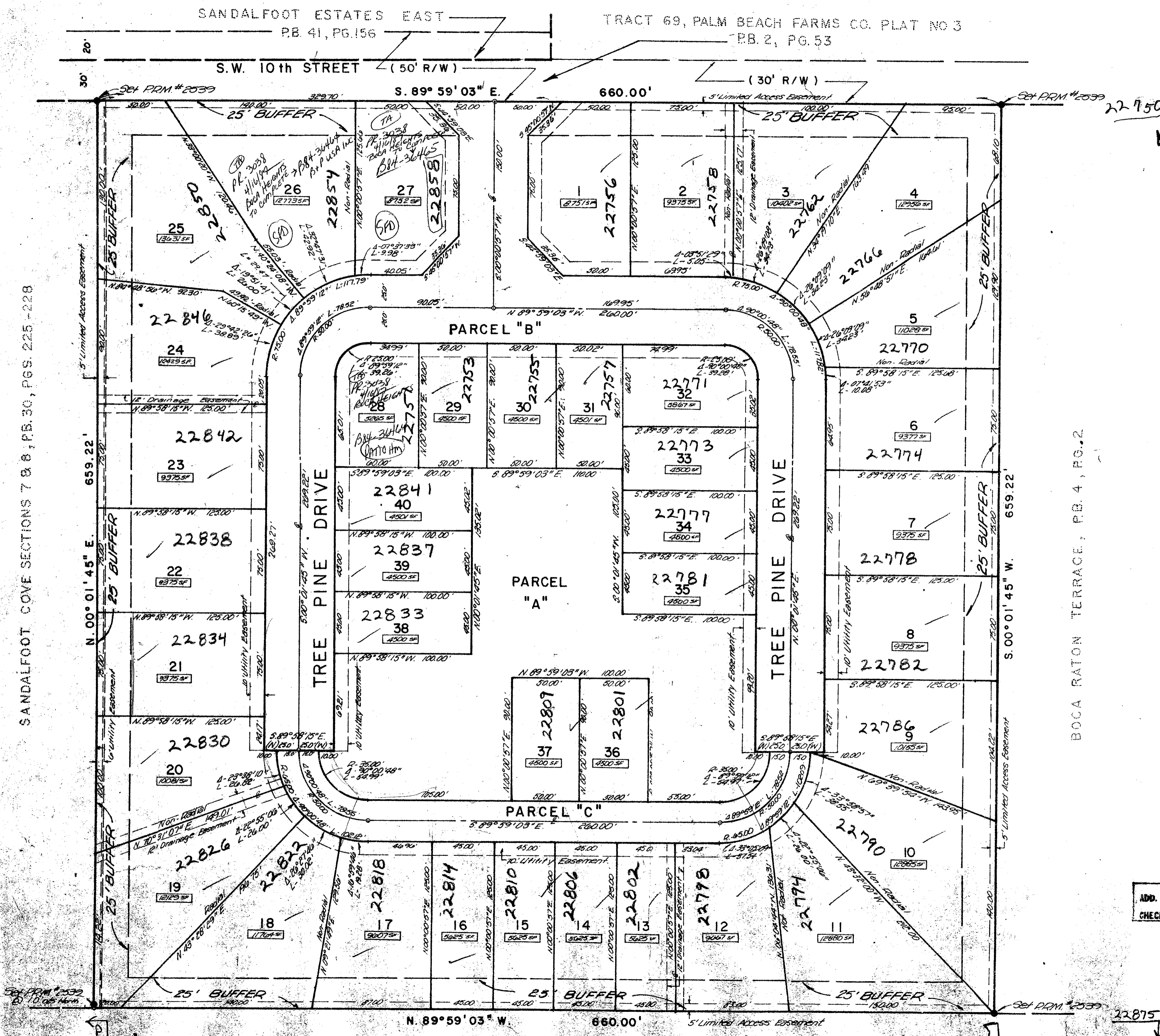
# BOCA PINES P.U.D.

LYING IN PART OF SECTION 29, TOWNSHIP 47 SOUTH, RANGE 42 EAST, PALM BEACH COUNTY, FLORIDA

SHEET 2 OF 2 ..... MARCH 1986

93

STATE OF FLORIDA  
COUNTY OF PALM BEACH  
This plat was filed for  
record at \_\_\_\_\_ M. this \_\_\_\_\_ day  
of \_\_\_\_\_ 1986 and duly  
recorded in Plat Book No. \_\_\_\_\_  
on Page \_\_\_\_\_  
JOHN B. DUNKLE  
Clerk Circuit Court  
By \_\_\_\_\_



of 1/27/87  
22/47/42

SUBDIVISION	Boca Pines
BOOK	55
PAGE	93
FLOOD ZONE	A0-1
FLOOD MAP	1400
ROAD	54
ZONING	
ZIP CODE	33433
ADD NAME	

BOCA RATON TERRACE, P.B. 4, P.G. 2

ADD BY [Signature] BT  
CHECKED BY [Signature]

0437-001

Collect -  
Pat. 84-A3  
give to [Signature]

Some units are  
strait sets, others  
are patio homes.  
PLEASE NOT WITHHOLD  
LOT WITH PLAT

BOCA PINES P.U.D. 55/93

DRAWING NUMBER

DRAWING NUMBER

DRAWING NUMBER

SANDALFOOT COVE SECTIONS 7 & 8, P.B. 30, PGS. 225 - 228

TRACT 89, PALM BEACH FARMS CO. PLAT NO 3  
P.B. 2, PG. 53