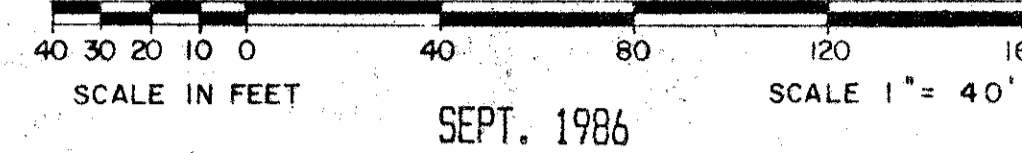
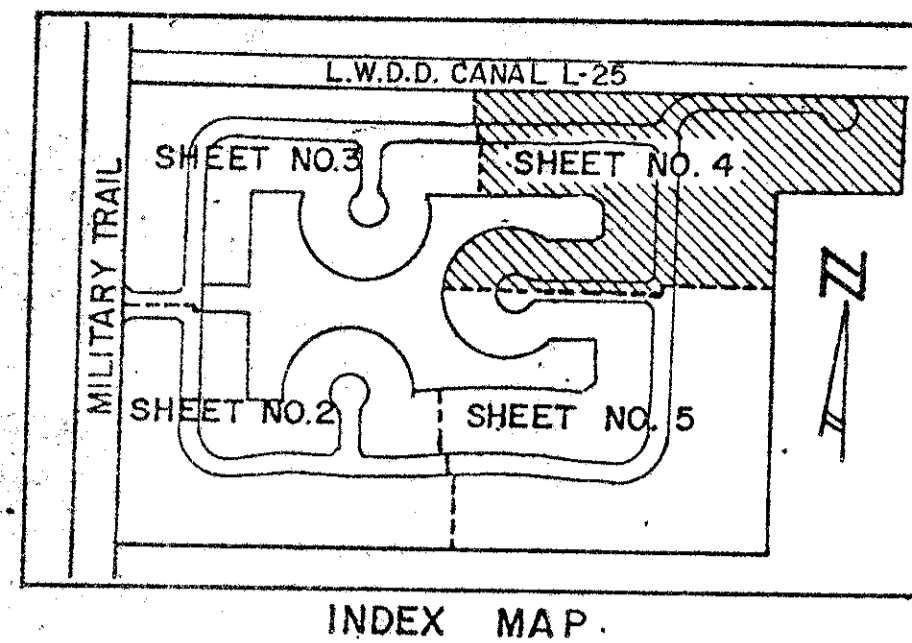


55/140

# EQUESTRIAN PLAT II

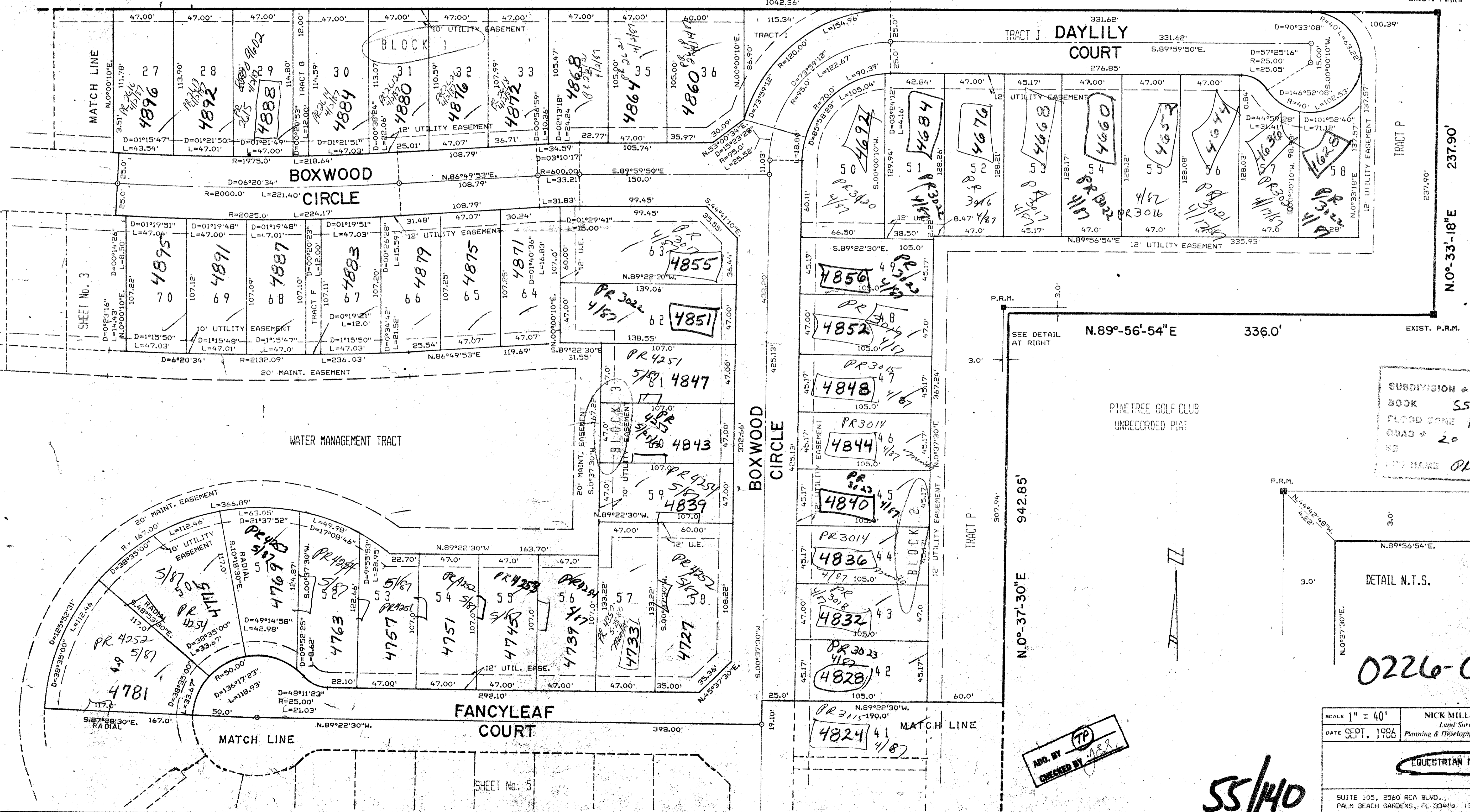
A REPLAT OF TRACT "B" OF EQUESTRIAN PLAT  
PER PLAT BOOK 31, PAGES 75 & 76  
IN SECTION 25, TWP. 45S, RGE. 42E.  
PALM BEACH COUNTY, FLORIDA.  
A PORTION OF A P.U.D. IN COUNTRY CLUB TRAIL  
SHEET 4 OF 5 SHEETS

140



L.W.D.D. CANAL L-25  
(PER D.R.B. 2730, PG. 1107  
& D.R.B. 2462, PG. 1273)

N.89°-59'-50"W 1996.45'



SUBDIVISION \* Equestrian  
BOOK 55 PAGE 140  
FLOOD ZONE B. FLOOD MAP # 1008  
QUAD # 20. 211110  
SEE BOOK 33436  
PLAT # 0226-004

SCALE 1" = 40'	NICK MILLER, INC. Land Surveying Planning & Development Consultants	DRAWN BY: [Signature]
DATE SEPT. 1986		CHECK: [Signature]
<b>EQUESTRIAN PLAT II</b>		
SUITE 105, 2560 RCA BLVD. PALM BEACH GARDENS, FL 33410 (305) 627-5200		DRAWING NUMBER 86-0048

55/140

ADD. BY: [Signature]  
CHECKED BY: [Signature]