

55/144

BREAKERS WEST PLAT NO. 12

SITUATE IN SECTION 30, TOWNSHIP 43 SOUTH, RANGE 42 EAST,
PALM BEACH COUNTY, FLORIDA, BEING A REPLAT OF A PORTION OF
PALM BEACH FARMS COMPANY PLAT NO. 3 (P.B. 2, P. 45 - 54).

"A PART OF A PLANNED UNIT DEVELOPMENT"

SHEET 3 OF 3

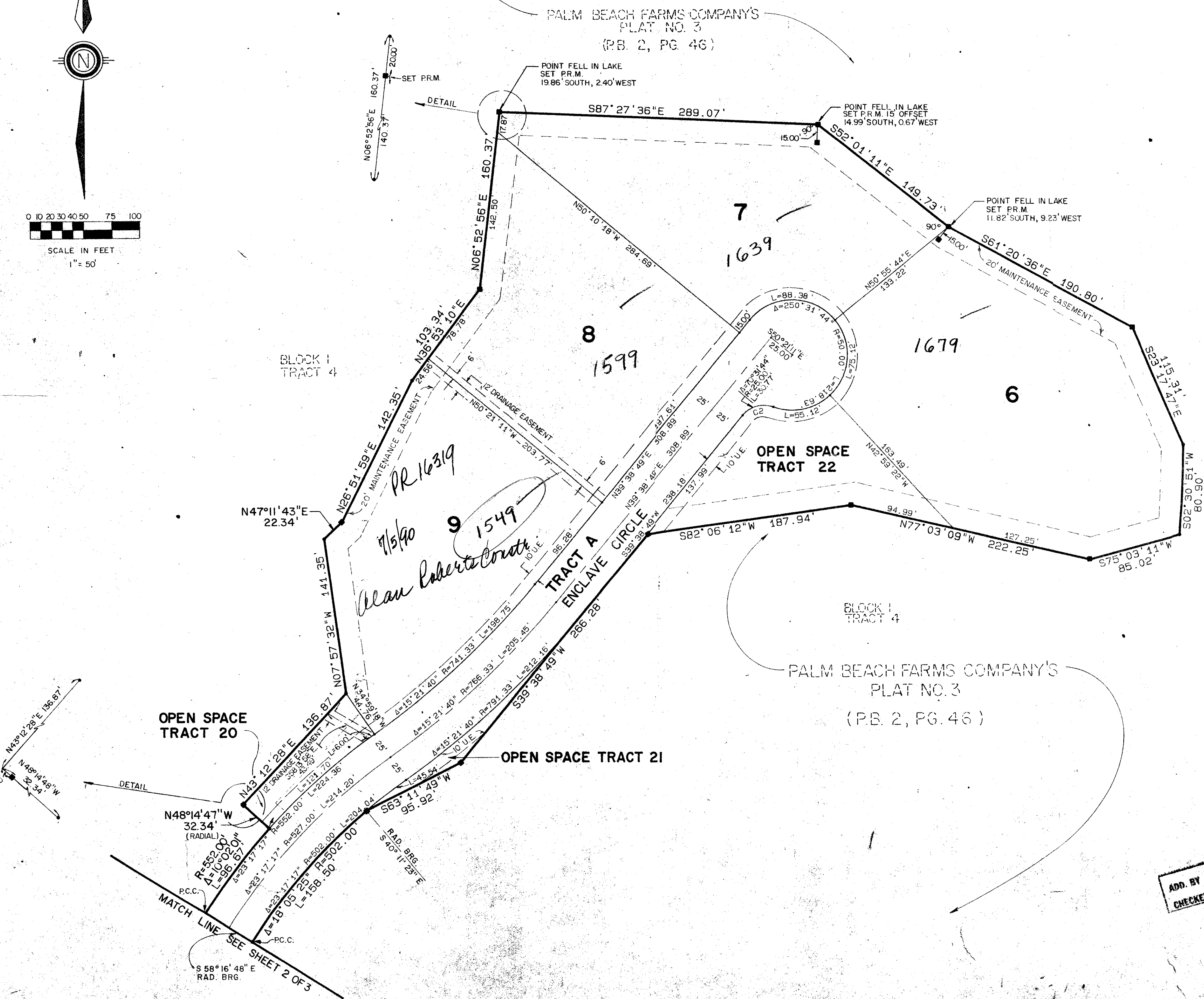
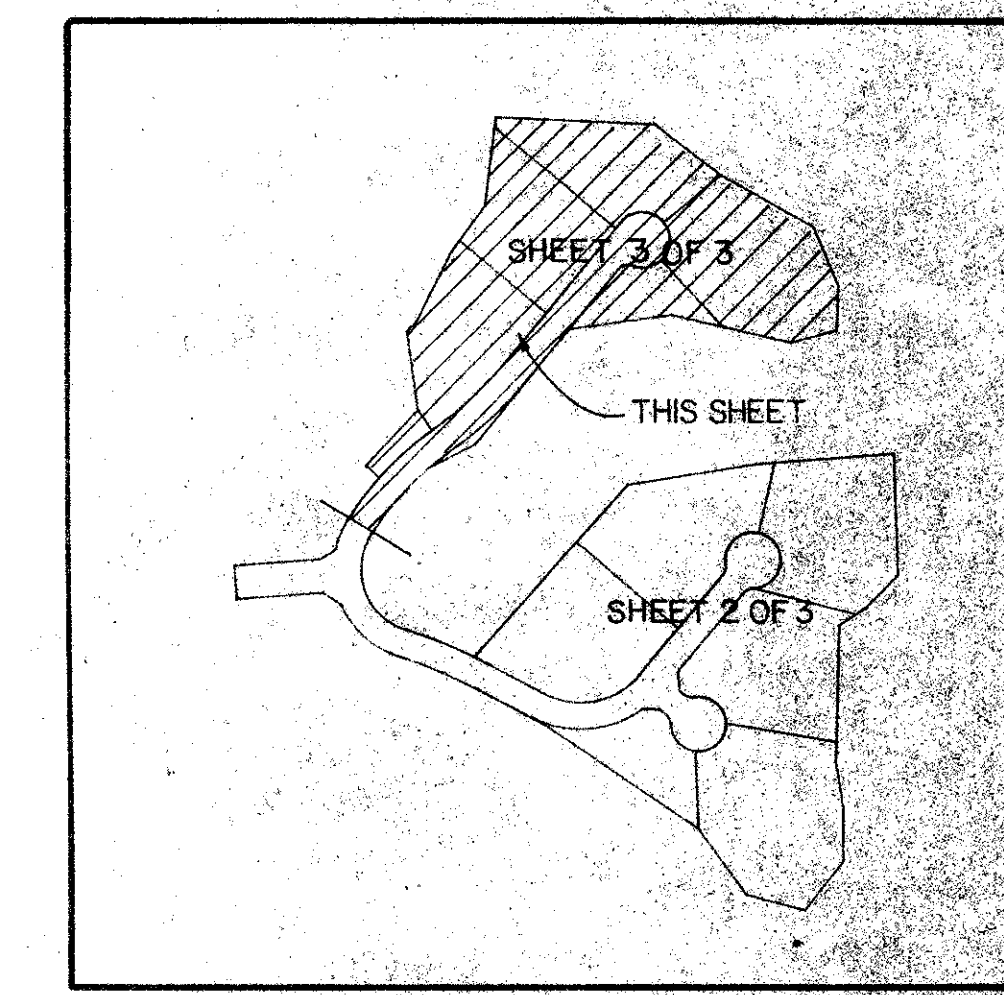
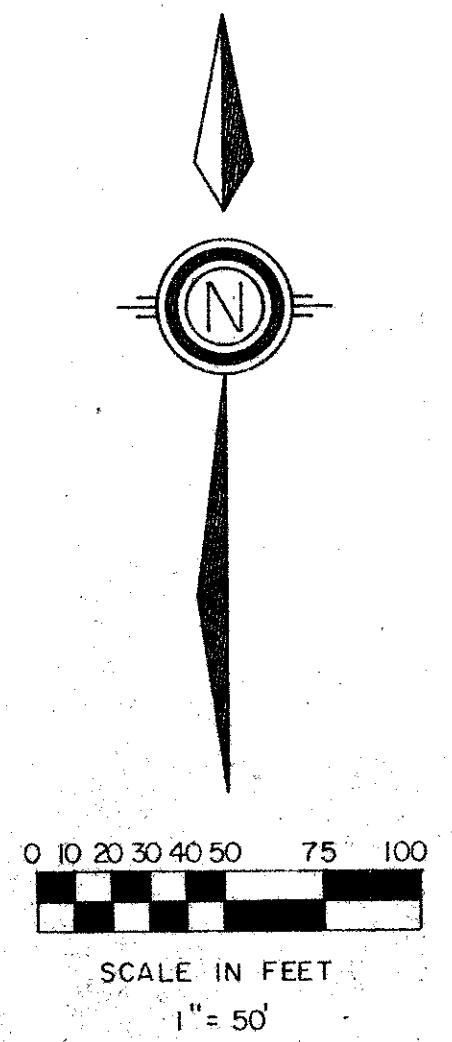
144

STATE OF FLORIDA
COUNTY OF PALM BEACH
THIS PLAT WAS FILED FOR
RECORD _____ DAY OF _____
AD, 1987 AND DULY RECORDED
IN PLAT BOOK _____ ON PAGES
_____ AND _____
BY: JOHN B. DUNKLE, CLERK
O.C.

DRAWING NUMBER

DRAWING NUMBER

DRAWING NUMBER



02/13/87 30/43/42
SUBDIVISION + Breakers West
BOOK 55 PAGE 144
FLOOD ZONE B FLOOD MAP + 1.50A
QUAD + 46
PUD NAME Plat 12

ADD. BY TP
CHECKED BY [Signature]

55/144

0217-005

Meridian		2000 LOMBARD STREET	
Surveying and mapping inc.		WEST PALM BEACH, FL.	
DRAWN	M.E.H.	DATE	9/25/86
CHECKED	D.M.W.	SCALE	1" = 50'
DRAWING NO.	86-073-00	BREAKERS WEST PLAT NO. 12	