

55/149

149

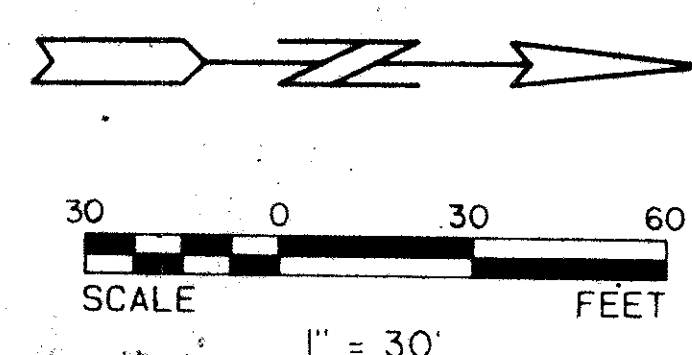
"A PART OF A PLANNED UNIT DEVELOPMENT" BREAKERS WEST PLAT NO. 13 "THE COLONY"

PALM BEACH COUNTY, FLORIDA

JANUARY 1987
Hutcheon Engineers
CIVIL ENGINEERS & SURVEYORS
BELLE GLADE WEST PALM BEACH STUART

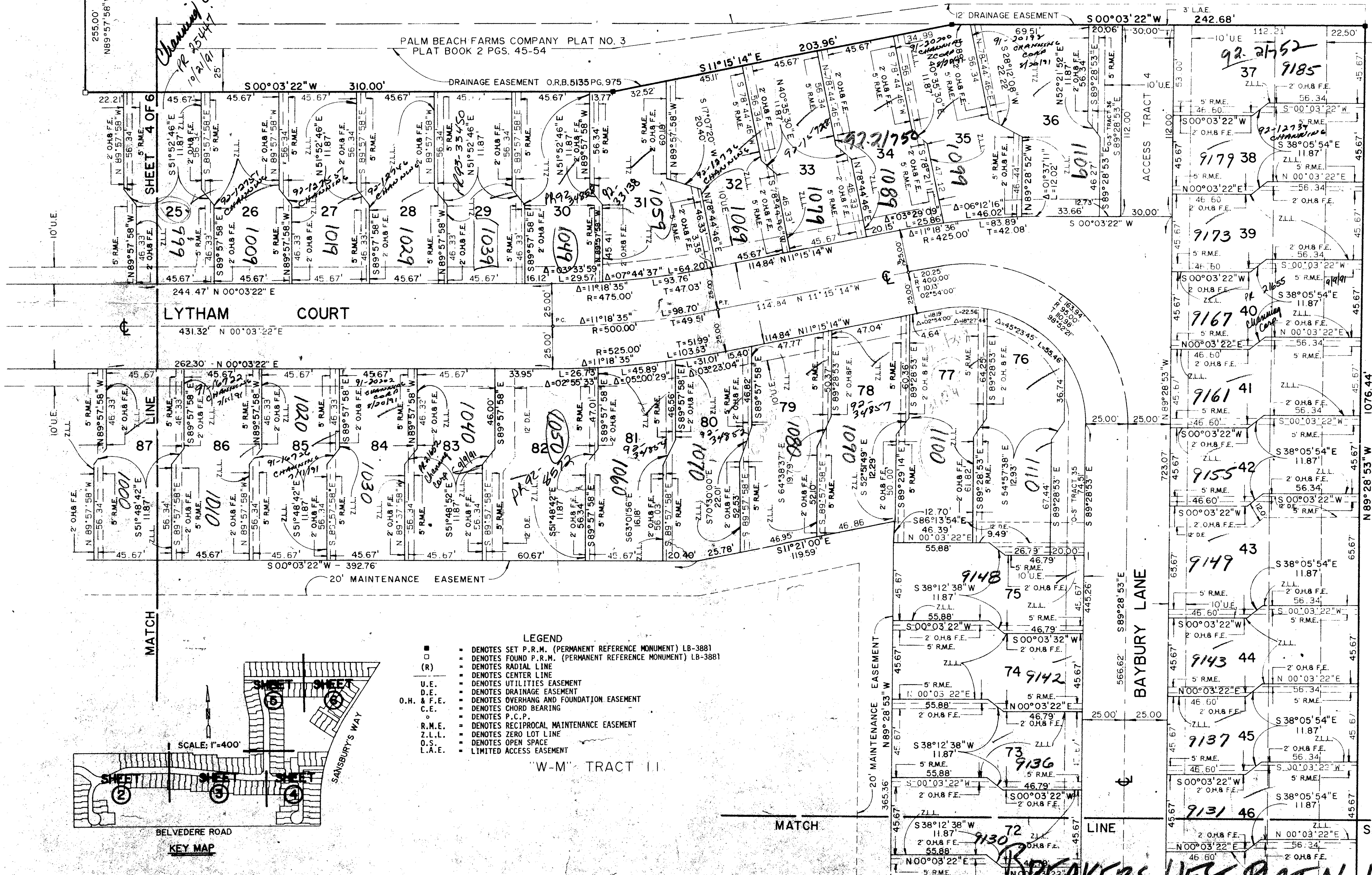
SHEET 5 OF 6 SHEETS

- SURVEYORS NOTES:**
- Easements:
 - No buildings or any kind of construction shall be placed in utility or drainage easements.
 - No structures, trees or shrubs shall be placed on drainage easements.
 - Approval of landscaping on utility easements other than water and sewer shall be only with the approval of all utilities occupying same.
 - Where a drainage easement and any other type of easement cross, any and all uses for drainage purposes shall take precedence.
 - Bearings shown hereon are consistent with the bearings shown on BREAKERS WEST PLAT NO. 2, Plat Book 36, Pages 31 thru 35.

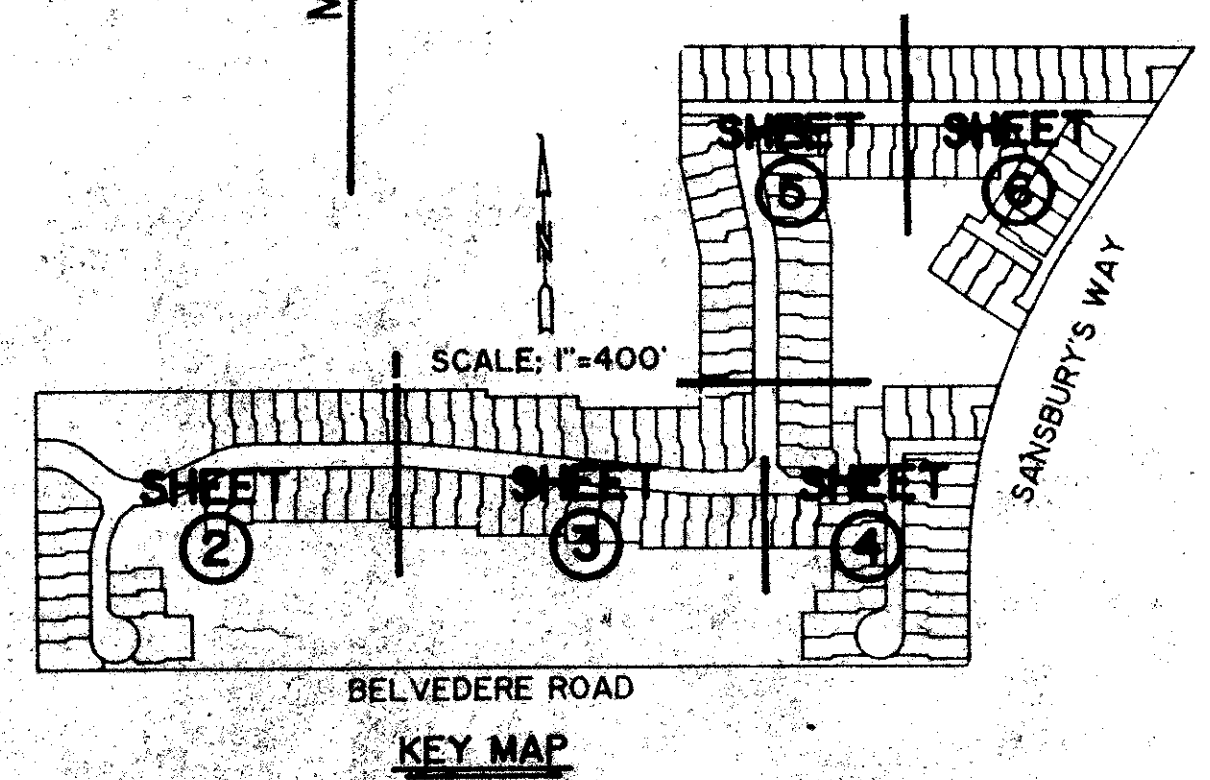


BREAKERS WEST PLAT NO 2
O-S TRACT 3
P.B. 36 P. 31-35

PALM BEACH FARMS COMPANY PLAT NO. 3
PLAT BOOK 2 PGS. 45-54



- LEGEND**
- DENOTES SET P.R.M. (PERMANENT REFERENCE MONUMENT) LB-3881
 - DENOTES FOUND P.R.M. (PERMANENT REFERENCE MONUMENT) LB-3881
 - (R) DENOTES RADIAL LINE
 - DENOTES CENTER LINE
 - U.E. DENOTES UTILITIES EASEMENT
 - D.E. DENOTES DRAINAGE EASEMENT
 - O.H. & F.E. DENOTES OVERHANG AND FOUNDATION EASEMENT
 - C.E. DENOTES CHORD BEARING
 - P.C. DENOTES P.C.P.
 - R.M.E. DENOTES RECIPROCAL MAINTENANCE EASEMENT
 - Z.L.L. DENOTES ZERO LOT LINE
 - O.S. DENOTES OPEN SPACE
 - L.A.E. DENOTES LIMITED ACCESS EASEMENT



30' ABANDONED R/W
O.R.B. 5084, P. 869

BREAKERS WEST PLAT NO 2
O-S TRACT 3
P.B. 36 P. 31-35

30/31/43/42

SUBDIVISION = Breakers West
BOOK 55 PAGE 149
BLOCK ZONE B PLAT MAP # 150A
SHEET # 46 PLAT BOOK 3341
OLD NAME Plat 13

ADD. BY [Signature]
CHECKED BY [Signature]

SHEET 6 OF 6 0217-010

BREAKERS WEST PLAT No. 13 55/149

DRAWING NUMBER

DRAWING NUMBER

DRAWING NUMBER

PLAN HOLD CORPORATION • IRVINE, CALIFORNIA
REGISTERED PROFESSIONAL ENGINEER
REGISTERED PROFESSIONAL SURVEYOR

PLAN HOLD CORPORATION • IRVINE, CALIFORNIA
REGISTERED PROFESSIONAL ENGINEER
REGISTERED PROFESSIONAL SURVEYOR

PLAN HOLD CORPORATION • IRVINE, CALIFORNIA
REGISTERED PROFESSIONAL ENGINEER
REGISTERED PROFESSIONAL SURVEYOR