

DRAWING NUMBER
55/198

DRAWING NUMBER

DRAWING NUMBER

DRAWING NUMBER

OAK-LAND PARK

A MOBILE HOME CONDOMINIUM PARK

SITUATE IN SECTIONS 29 AND 32, TOWNSHIP 43 SOUTH, RANGE 42 EAST, PALM BEACH COUNTY, FLORIDA.
BEING A REPLAT OF A PORTION OF BLOCK 2, TRACTS 13, 14 & 16 OF PALM BEACH FARMS COMPANY
PLAT #3 AS IN PLAT BOOK 2, PAGE 46.

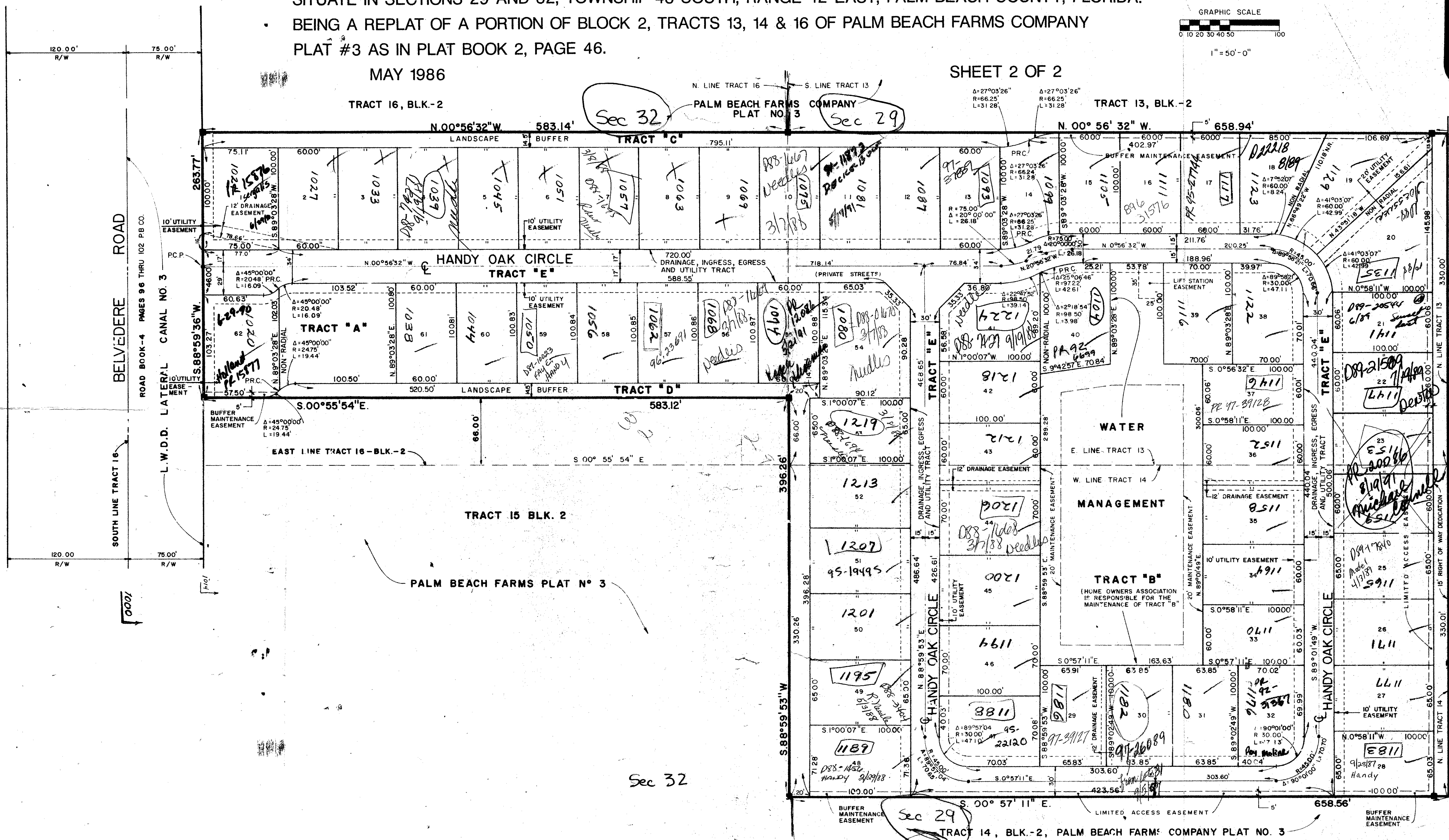
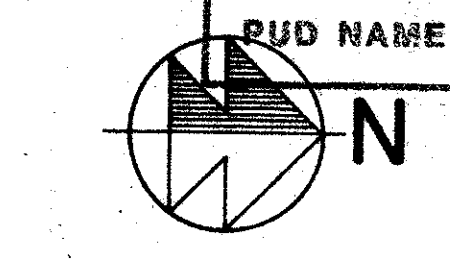
MAY 1986

SHEET 2 OF 2

SUBDIVISION * Oak-Land Park
BOOK 55 PAGE 197
FLOOD ZONE 0 FLOOD MAP # 150
QUAD # 46 ZONING
SE ZIP CODE 33411
SUBD NAME

198

STATE OF FLORIDA
COUNTY OF PALM BEACH
THIS PLAT WAS FILED FOR
RECORD
THIS DAY OF
MAY, 1986 AND DULY RECORDED
IN PLAT BOOK ON PAGES
AND
JOHN B. DUNKLE, CLERK
BY: _____, D.C.



APP. BY [Signature]
CHECKED BY [Signature]

0495-001
55/198

Ret # 83-98
Pay #

Weyant & Associates, Inc.
Engineers - Planners - Surveyors
Palm Beach 683-6333
Stuart 286-7033

OAK-LAND PARK

SHEET 2 OF 2