

# SANDPIPER COVE P.U.D.

A PORTION OF SECTION'S 18 AND 19 TOWNSHIP 45 SOUTH, RANGE 43 EAST  
PALM BEACH COUNTY, FLORIDA

IN 4 SHEETS SHEET NO. 2

Post, Buckley, Schuh & Jernigan, Inc.

CONSULTING ENGINEERS and PLANNERS  
8600 N. W. 16th STREET MIAMI, FLORIDA 33166 1-305-692-7275



DECEMBER 1986

STATE OF FLORIDA  
COUNTY OF PALM BEACH

THIS PLAT WAS FILED  
FOR RECORD AT \_\_\_\_\_ M,  
THIS \_\_\_\_\_ DAY OF \_\_\_\_\_, 1987,  
AND DULY RECORDED IN  
PLAT BOOK NO. \_\_\_\_\_ ON  
PAGE \_\_\_\_\_

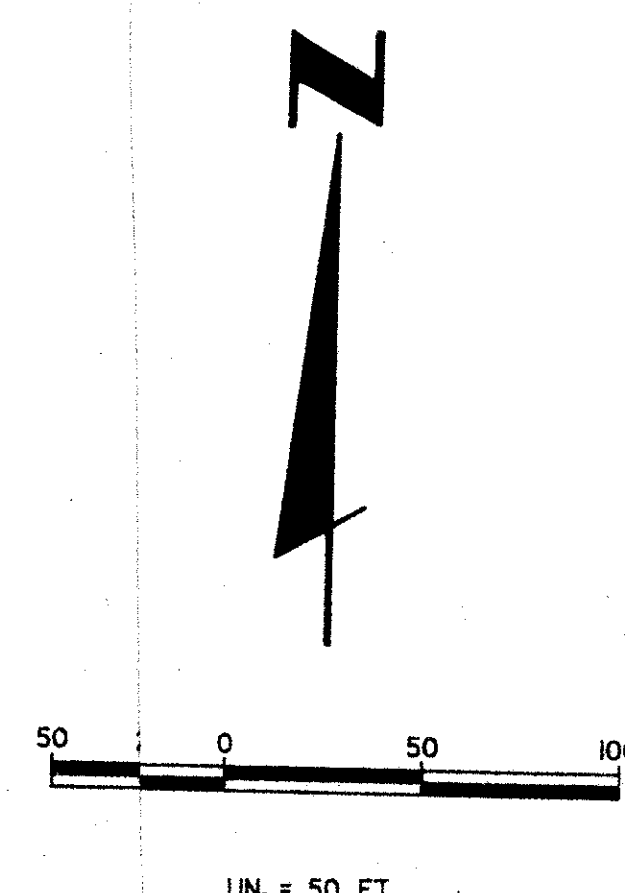
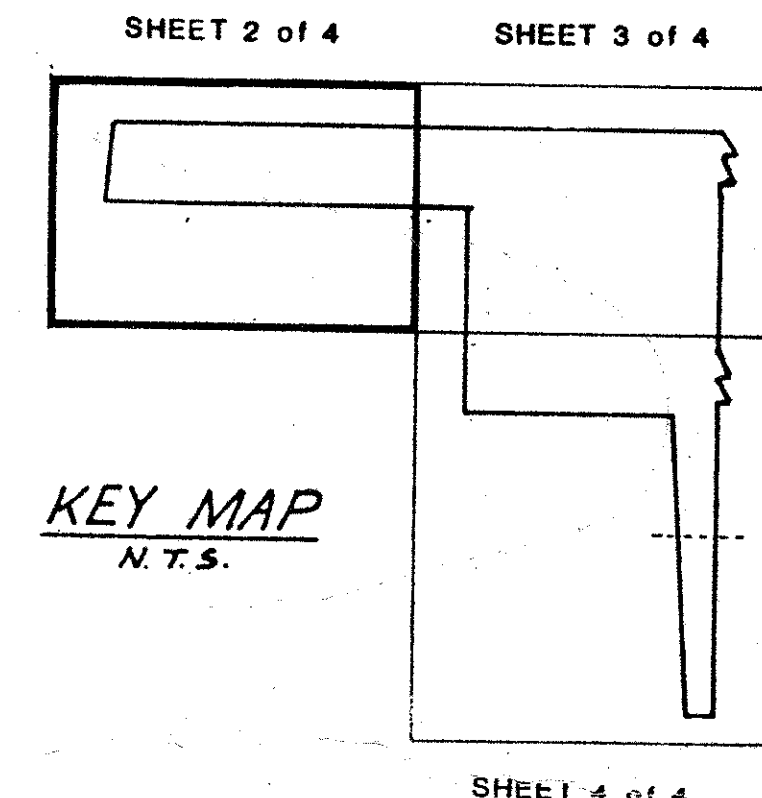
JOHN B. DUNKLE  
CLERK CIRCUIT COURT

BY: \_\_\_\_\_ D.C.

18419/45/43

SUBDIVISION # Sandpiper Cove	PAGE 2
BOOK 56	FLOOD MAP # 1908
FLOOD ZONE B	ZONING
GRID #	ZIP CODE 33436
CD	
PLD NAME	

18-19  
19-20

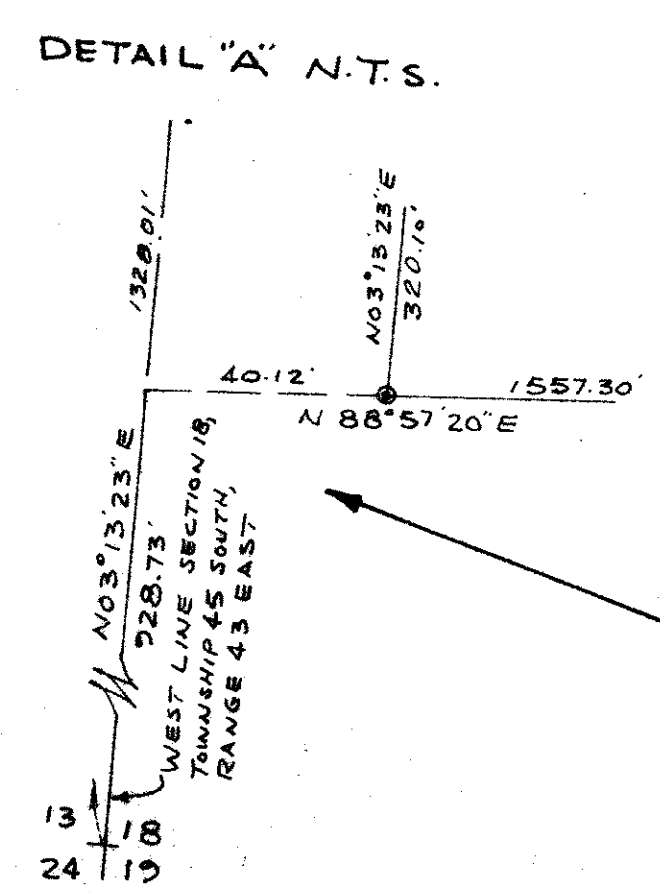
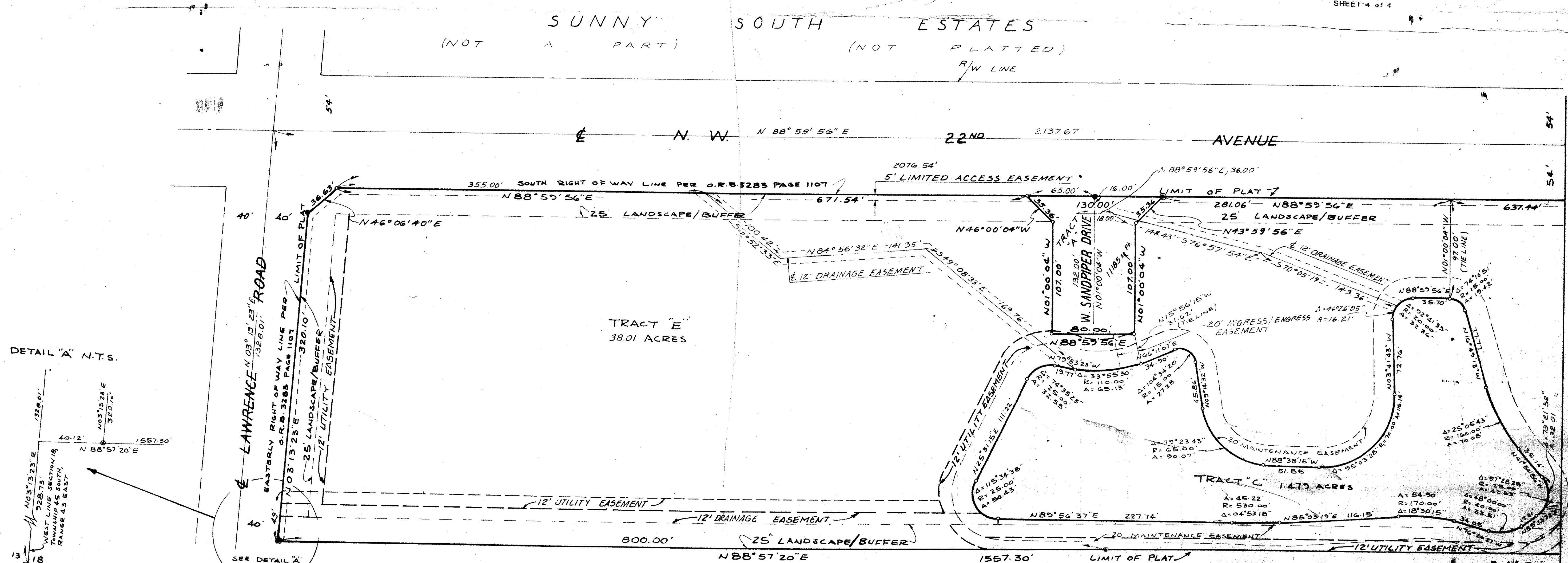


DRAWING NUMBER  
**56/2**

DRAWING NUMBER

DRAWING NUMBER

DRAWING NUMBER



MATCH LINE SEE SHEET 3

SANDPIPER COVE P.U.D. 56/2 0480-000