

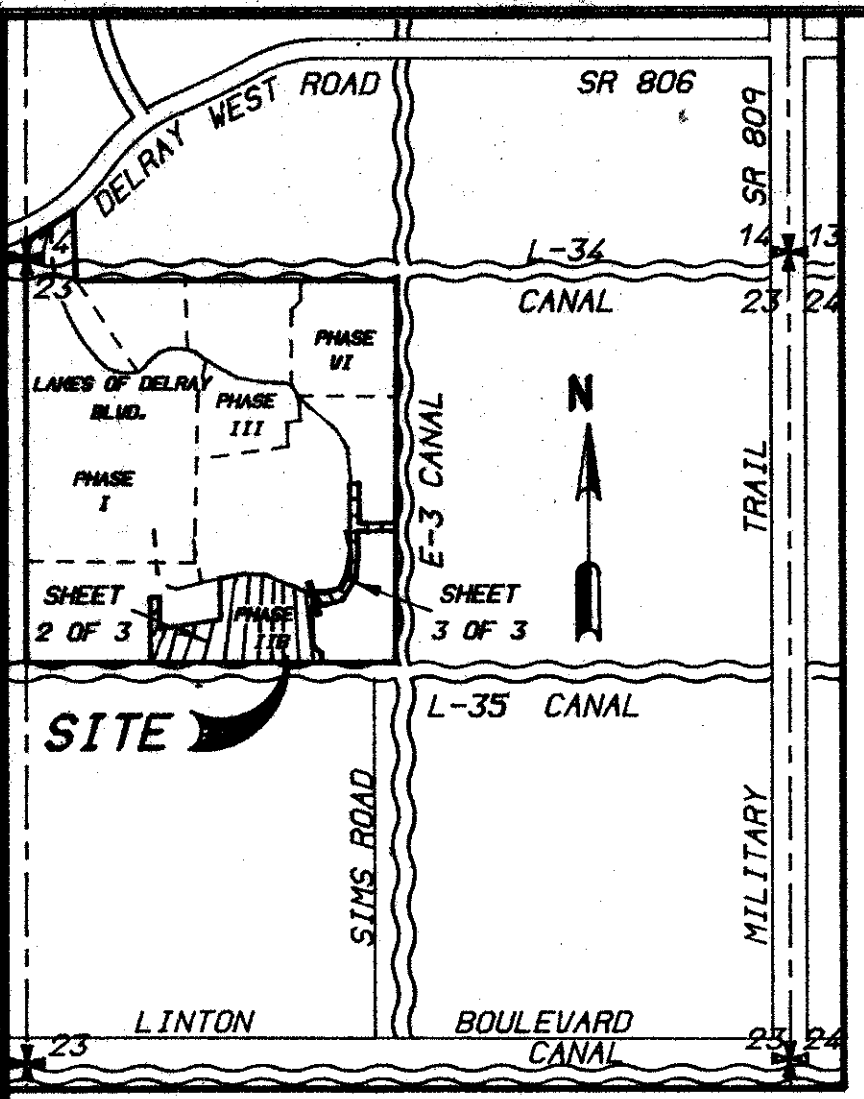
PLAT NO. 11-B LAKES OF DELRAY

BEING A PORTION OF THE NORTHWEST ONE - QUARTER
OF SECTION 23, TOWNSHIP 46 SOUTH, RANGE 42 EAST
PALM BEACH COUNTY, FLORIDA

JUNE, 1986
SHEET 2 OF 3 SHEETS

THIS INSTRUMENT PREPARED BY
LEO E. NOBLE P.L.S. 3143 STATE OF FLORIDA

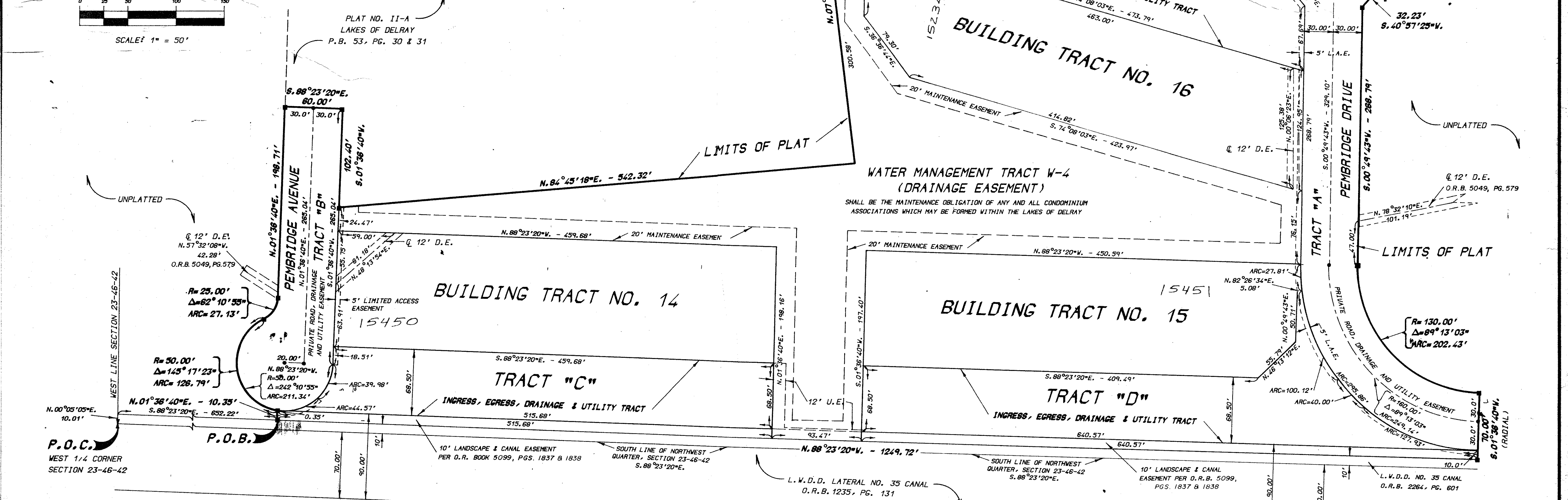
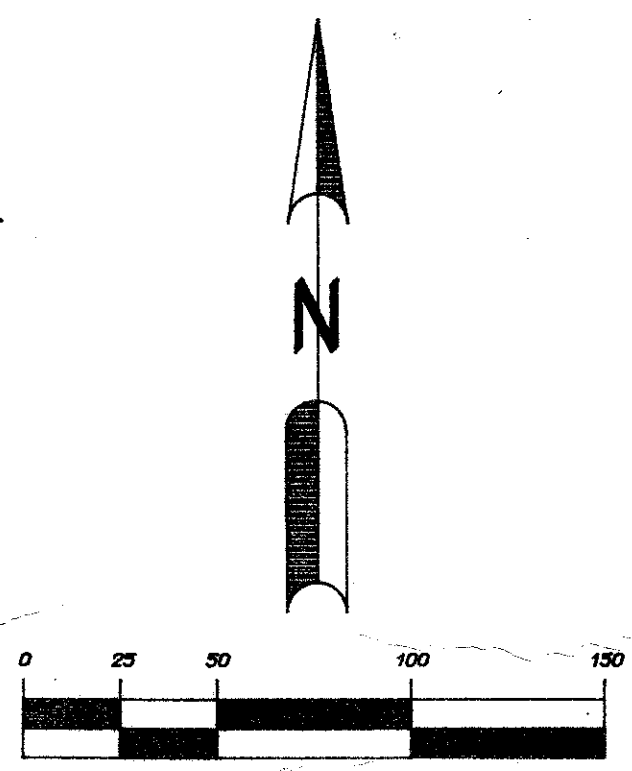
LAWSON, NOBLE & ASSOCIATES, INC.
ENGINEERS PLANNERS TESTING SURVEYORS
BOYNTON BEACH, FLORIDA



LOCATION MAP
NTS

SURVEYOR'S NOTES:

- ALL P.R.M.'s BEAR THE REGISTRATION NUMBER 3143 SHOWN THUS -
- PERMANENT CONTROL POINTS SHOWN THUS -
- THE BEARINGS SHOWN HEREON ARE BASED ON A BEARING OF N.00°05'05"E. ON THE WEST LINE OF SECT. 23-46-42 PER THE PLAT OF LAKES OF DELRAY - PLAT NO. ONE AS RECORDED IN PLAT BOOK 42, PGS. 46 AND 47, PUBLIC RECORDS OF PALM BEACH COUNTY, FLORIDA.
- BUILDING SETBACK LINES SHALL BE AS REQUIRED BY PALM BEACH COUNTY ZONING REGULATIONS.
- NO BUILDINGS OR ANY KIND OF CONSTRUCTION SHALL BE PLACED ON UTILITY OR DRAINAGE EASEMENTS.
- THERE SHALL BE NO TREES OR SHRUBS PLACED ON UTILITY EASEMENTS WHICH ARE PROVIDED FOR WATER AND SEWER USE OR UPON DRAINAGE EASEMENTS.
- LANDSCAPING ON OTHER UTILITY EASEMENTS SHALL BE ALLOWED ONLY AFTER CONSENT OF ALL UTILITY COMPANIES OCCUPYING SAME.
- ALL DRAINAGE EASEMENTS ARE 12' WIDE UNLESS OTHERWISE NOTED.
- THERE SHALL BE NO ABOVE GROUND APPURTANCES WHERE UTILITY EASEMENTS CROSS MAINTENANCE EASEMENTS.
- D.E. DENOTES DRAINAGE EASEMENT
- L.A.E. DENOTES LIMITED ACCESS EASEMENT
- U.E. DENOTES UTILITY EASEMENT



23/4/42
 DIVISION = Lakes of Delray
 BOOK SC PAGE 17
 RECORD NONE B
 FILED NO. 220 B
 37
 ZONING
 3344 S
 PUB NAME 011-B

40 unit condo bldg
 12/30/80 PR 102-13
 demolished

ADD. BY BT
 CHECKED BY BT

PLAT NO. 11-B LAKES OF DELRAY

0267-301
 56/17

PLAN HOLD CORPORATION • IRVINE, CALIFORNIA
 RECORDED BY NUMBER 027548
 PLAN HOLD CORPORATION • IRVINE, CALIFORNIA
 RECORDED BY NUMBER 027548
 PLAN HOLD CORPORATION • IRVINE, CALIFORNIA
 RECORDED BY NUMBER 027548