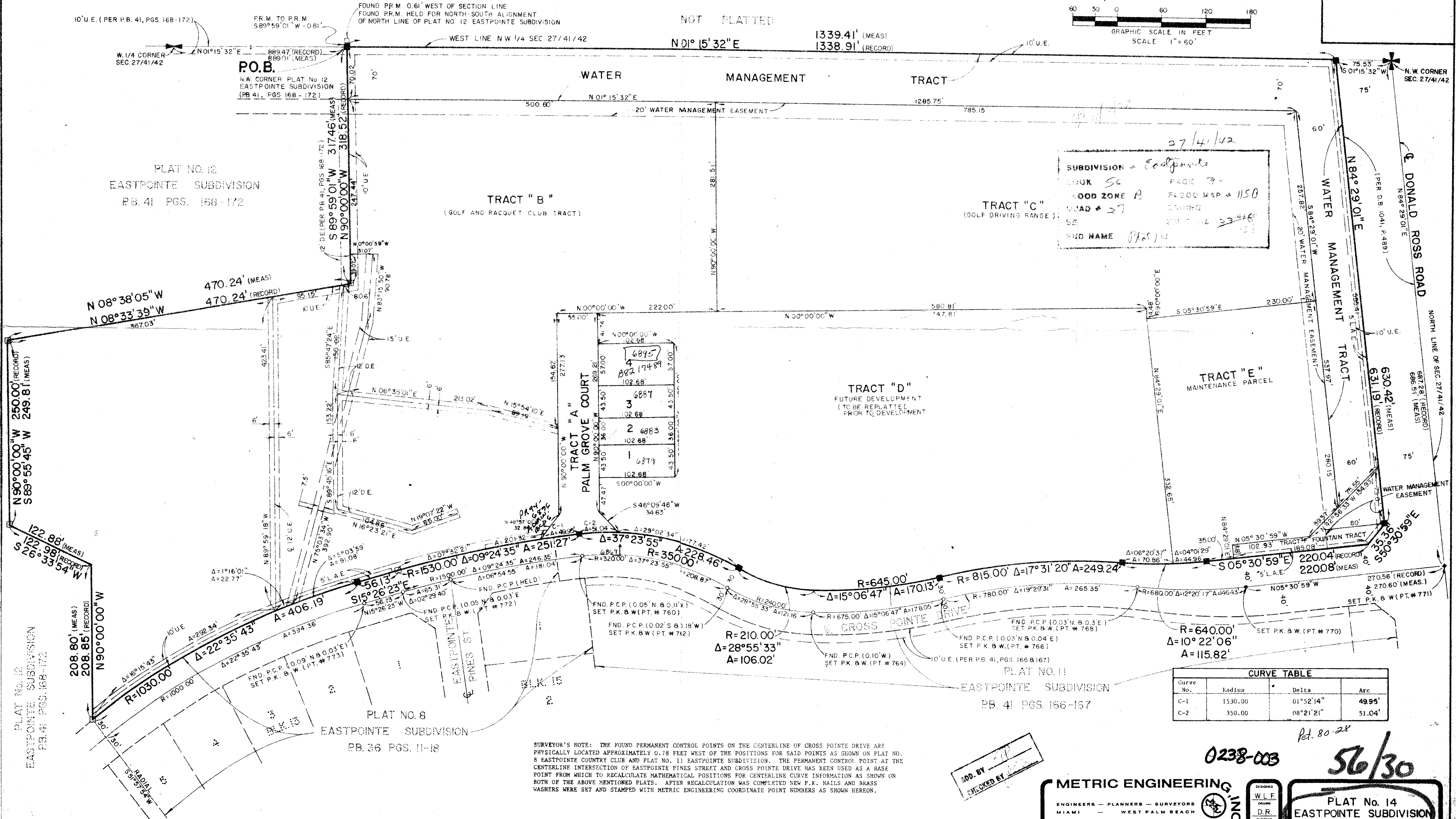
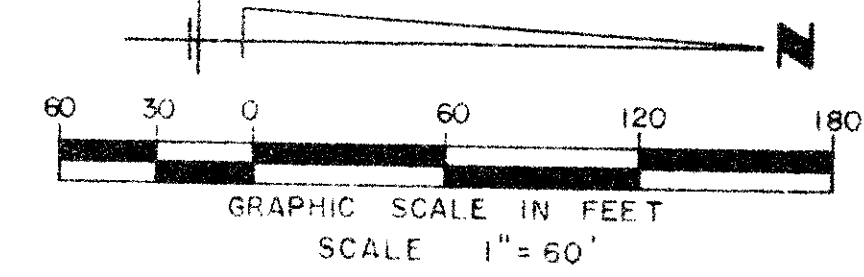


# PLAT No. 14 EASTPOINTE SUBDIVISION

## (A PLANNED UNIT DEVELOPMENT)

SHEET 2 OF 2



*27/4/42*  
SUBDIVISION - Eastpointe  
BOOK SC PAGE 89  
FLOOD ZONE B FLOOD MAP # 1150  
ROAD # 27 ZONING  
SE 2700' 33' 48"  
DED NAME (P. 125) 153

TRACT "A" PALM GROVE COURT

4	6895	102.68	57.00
3	6887	102.68	57.00
2	6883	102.68	57.00
1	6879	102.68	57.00

CURVE TABLE

Curve No.	Radius	Delta	Arc
C-1	1530.00	01°52'14"	49.95'
C-2	350.00	08°21'21"	51.04'

SURVEYOR'S NOTE: THE FOUND PERMANENT CONTROL POINTS ON THE CENTERLINE OF CROSS POINT DRIVE ARE PHYSICALLY LOCATED APPROXIMATELY 0.78 FEET WEST OF THE POSITIONS FOR SAID POINTS AS SHOWN ON PLAT NO. 8 EASTPOINTE COUNTRY CLUB AND PLAT NO. 11 EASTPOINTE SUBDIVISION. THE PERMANENT CONTROL POINT AT THE CENTERLINE INTERSECTION OF EASTPOINTE PINES STREET AND CROSS POINT DRIVE HAS BEEN USED AS A BASE POINT FROM WHICH TO RECALCULATE MATHEMATICAL POSITIONS FOR CENTERLINE CURVE INFORMATION AS SHOWN ON BOTH OF THE ABOVE MENTIONED PLATS. AFTER RECALCULATION WAS COMPLETED NEW P.K. NAILS AND BRASS WASHERS WERE SET AND STAMPED WITH METRIC ENGINEERING COORDINATE POINT NUMBERS AS SHOWN HEREON.

APP. BY *[Signature]*  
CHECKED BY *[Signature]*

METRIC ENGINEERING INC.  
ENGINEERS - PLANNERS - SURVEYORS  
MIAMI - WEST PALM BEACH

0238-003  
56/30

PLAT No. 14  
EASTPOINTE SUBDIVISION  
SHEET 2 OF 2

PLAN HOLD CORPORATION - IRVINE, CALIFORNIA  
RECORDED BY NUMBER 07348  
PLAN HOLD CORPORATION - IRVINE, CALIFORNIA  
RECORDED BY NUMBER 07348  
PLAN HOLD CORPORATION - IRVINE, CALIFORNIA  
RECORDED BY NUMBER 07348  
PLAN HOLD CORPORATION - IRVINE, CALIFORNIA  
RECORDED BY NUMBER 07348