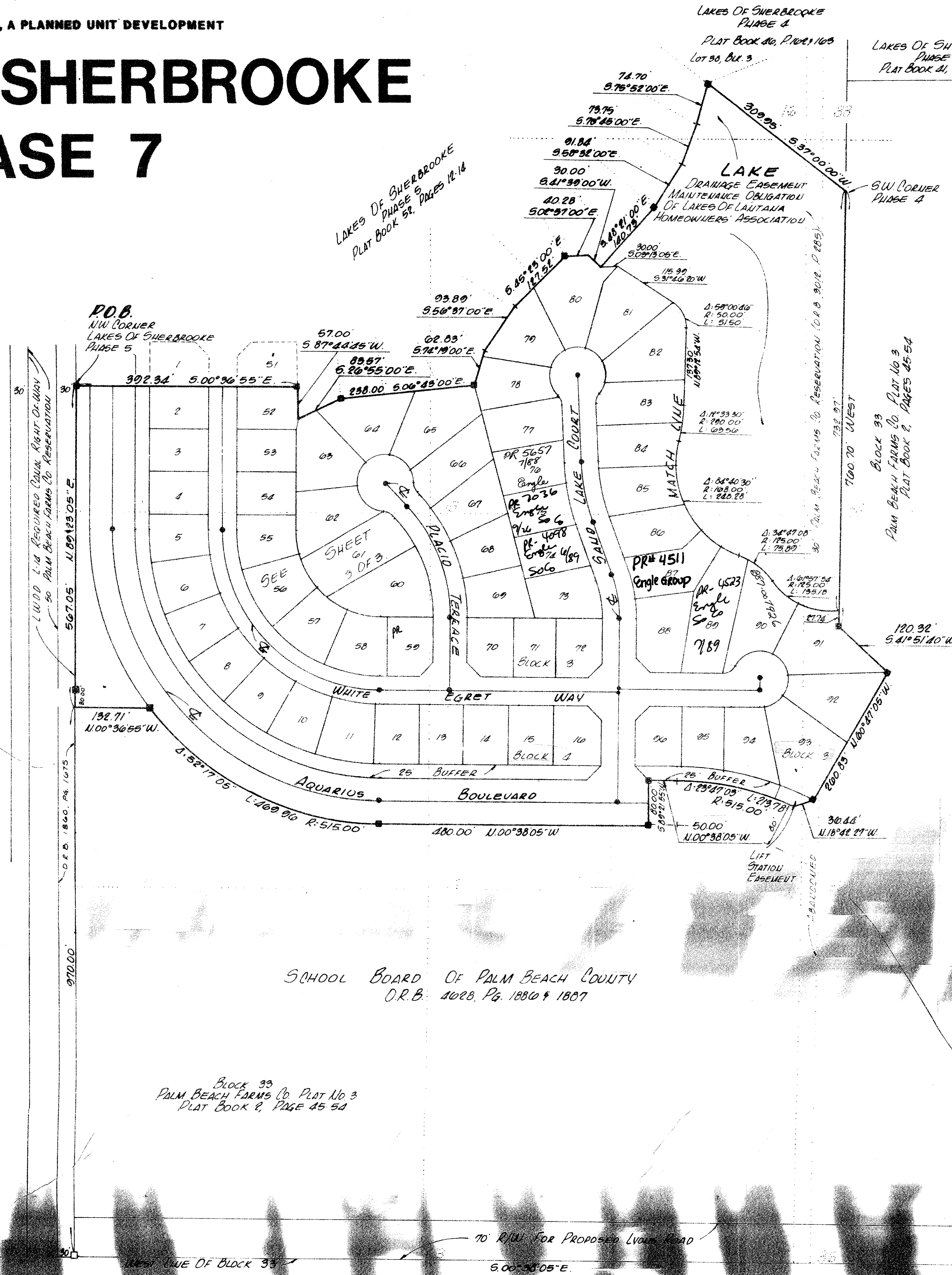
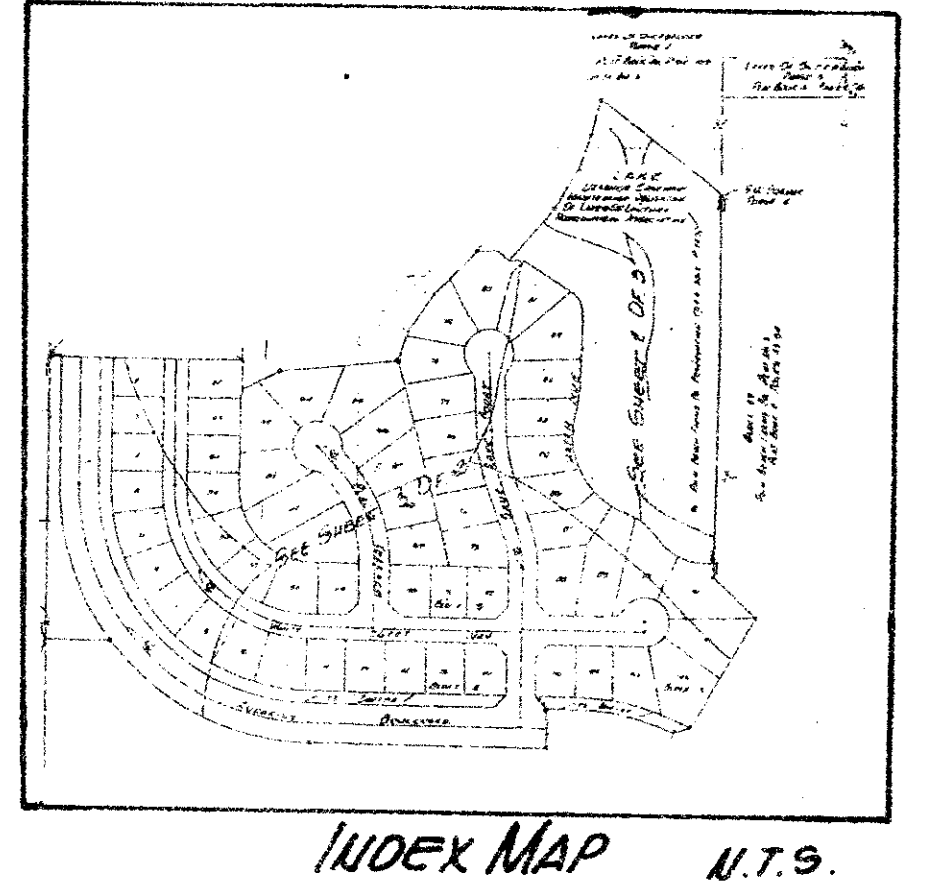
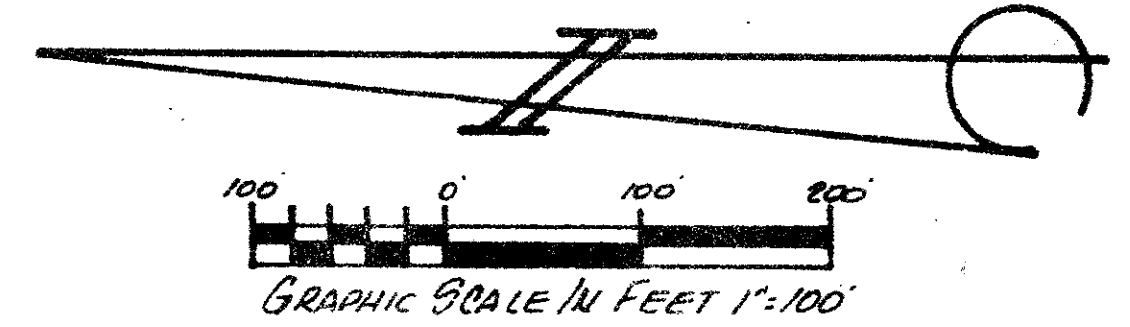


LAKES OF SHERBROOKE PHASE 7

38

30/41/42

SUBDIVISION	Lakes of Sherbrooke
BOOK	56
FLOOD ZONE	K
SUBDIVISION	46
ZIP CODE	33465
PUD NAME	Phase 7
	FSE I



NOTE:

There shall be no buildings or any kind of construction placed on utility or drainage easements.

There shall be no structures, trees or shrubs placed on drainage easements, or lake maintenance easements.

Approval of landscaping on utility easements other than water and sewer shall be only with the approval of all utilities occupying same.

Bearings refer to the State Road Department Right-of-Way Map of Lantana West Road, S. R. 812, Section No. 9353-151, dated January 1953, the center line thereof bearing North 88°04'24" West.

All Palm Beach Farms Co. Plat No. 3 thirty foot reservations encompassed by the Lakes of Lantana Planned Unit Development have been abandoned by Resolution No. R-79-159 and recorded in Official Record Book 3012, Pages 285-287, Public Records of Palm Beach County Florida.

All distances shown along curves are arc lengths, and lines that are drawn as radial lines are radial lines unless noted otherwise.

■ - indicates Permanent Reference Monument.
● - indicates Permanent Control Point.

TURNOUT REQUIRED

SIDEWALK REQUIRED

0268-003 56/38

ADAM & BERRY INC.	CONSULTING ENGINEERS & LAND SURVEYORS
DR. H.E. F.	SCALE 1"=100'
CK. D.P.	DATE JAN 1997
AP. D.P.	NO. 73-507.E

The City of Palm Beach Phase 7 Record Plat

FP-10 2 of 3

IRVINE CALIFORNIA
PLANNING CORPORATION
REPRODUCED BY NUMBER 0751A
POSITION CODE OF PRINT ON THE LINE