

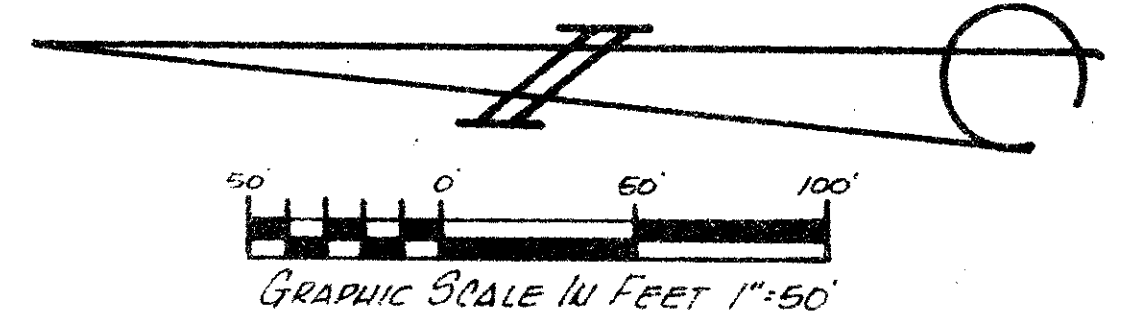
LAKES OF SHERBROOKE PHASE 7

39

22/04/02

SUBDIVISION Lakes of Sherbrooke
 BOOK 56 PAGE 39
 FLOOD ZONE B FLOOD MAP 190A
 QUAD # 48 ZONING
 RE ZIP CODE 33166
 SUBD NAME Sherbrooke

SEE SHEET 2 OF 3



NOTE:

There shall be no buildings or any kind of construction placed on utility or drainage easements.

There shall be no structures, trees or shrubs placed on drainage easements, or lake maintenance easements.

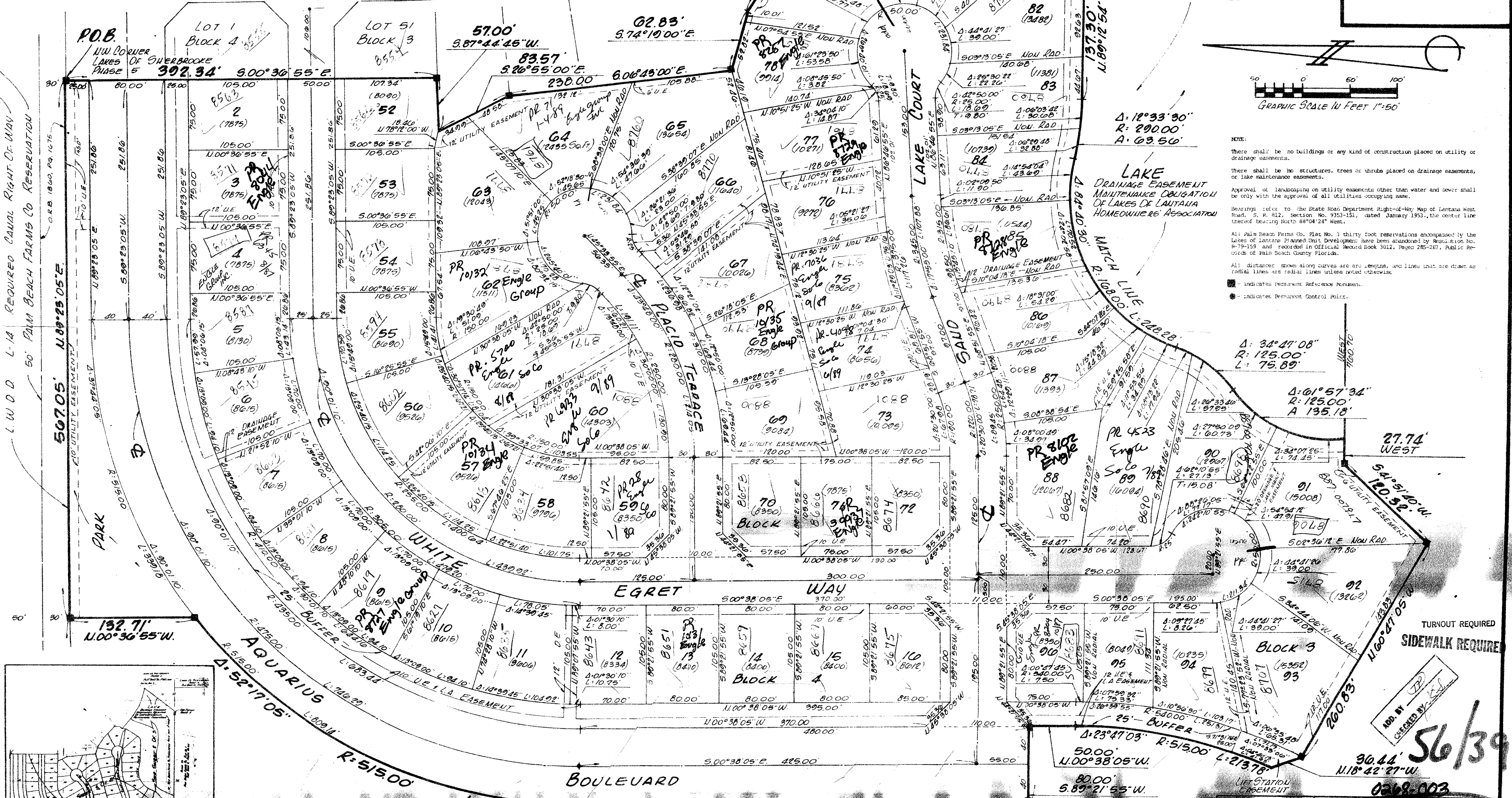
Approval of landscaping on utility easements other than water and sewer shall be only with the approval of all utilities occupying same.

Bearings refer to the State Road Department Right-of-Way Map of Lantana West South S. W. 912, Section No. 923-131, dated January 1953, the center line thereof bearing North 88°04'24" West.

All Palm Beach Farms Co. Plat No. 3 thirty foot reservations encompassed by the Lakes of Lantana Phased Unit Development have been abandoned by Resolution No. 6-79-159 and recorded in Official Record Book 3012, Pages 285-287, Public Records of Palm Beach County Florida.

All distances shown along curves are arc lengths, and lines that are drawn as radial lines are radial lines unless noted otherwise.

● indicates Permanent Reference Point.
 ○ indicates Permanent Control Point.



TURNOUT REQUIRED
SIDEWALK REQUIRED

56/39

0268-003

30.44' N.16°42'27"W.

BRADY & BRADY, INC.
 SURVEYING ENGINEERS &
 LAND SURVEYORS

Phase 7
 Record
 Plat

F.B. 1"=50'
 P.G. JAN. 1987
 73-507E

FP-10 3 OF 9

PLAN HOLD CORPORATION • IRVINE, CALIFORNIA
 RECORDED BY NUMBER 07349
 POSTAL CODE OF 92714

PLAN HOLD CORPORATION • IRVINE, CALIFORNIA
 RECORDED BY NUMBER 07349
 POSTAL CODE OF 92714

PLAN HOLD CORPORATION • IRVINE, CALIFORNIA
 RECORDED BY NUMBER 07349
 POSTAL CODE OF 92714