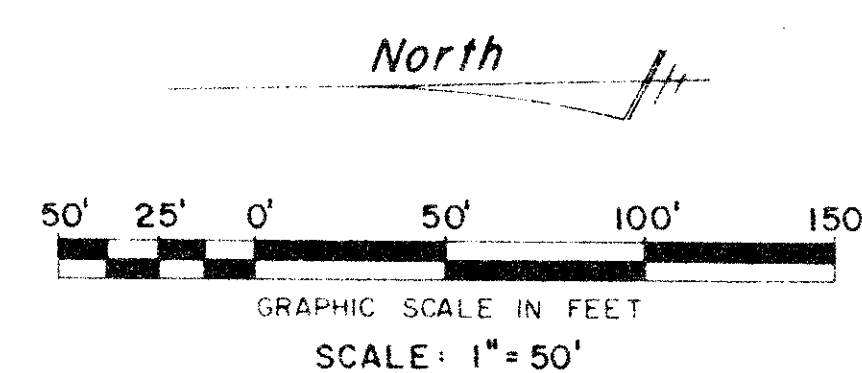
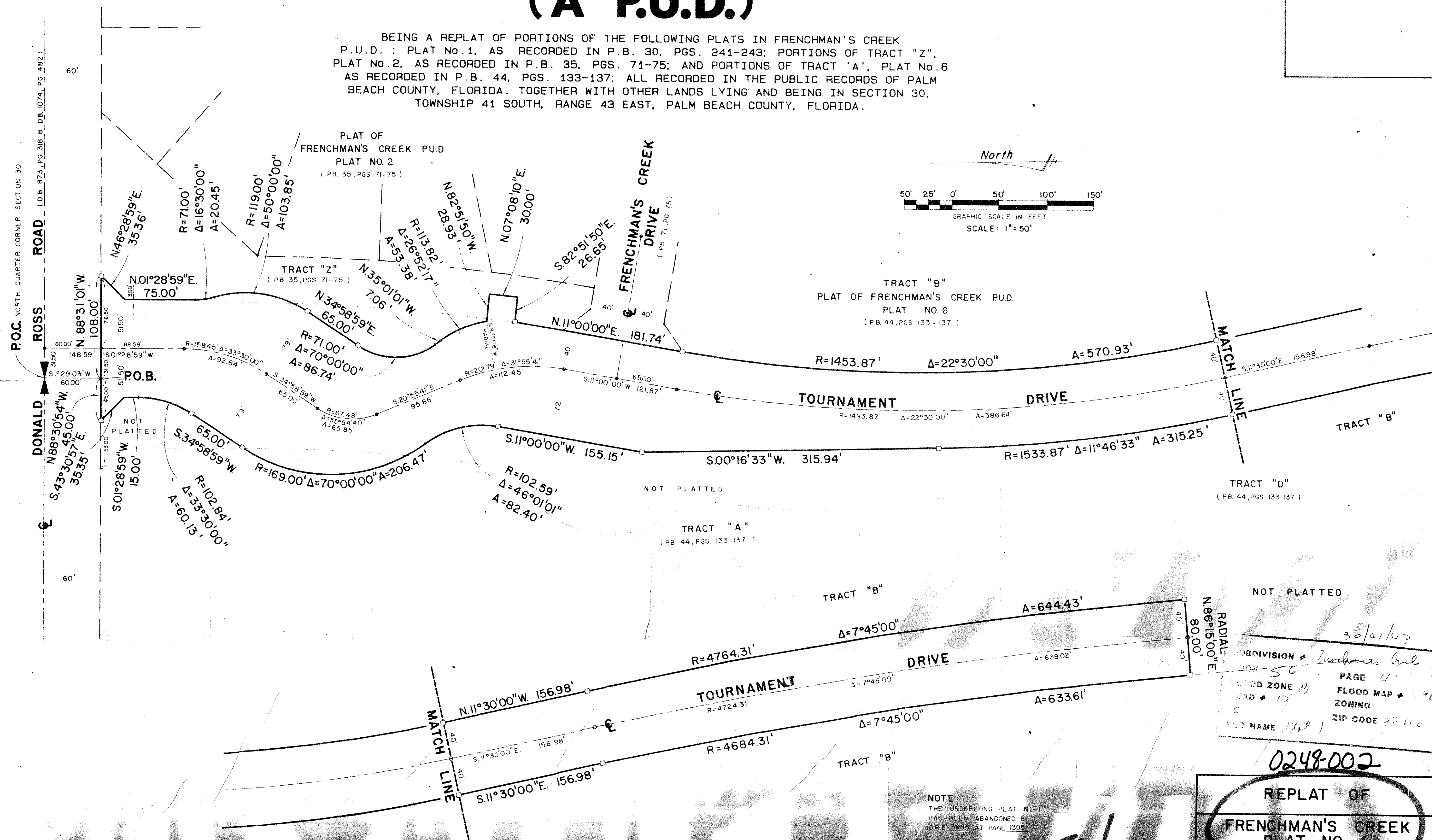


# REPLAT OF FRENCHMAN'S CREEK PLAT NO. 1 (A P.U.D.)

BEING A REPLAT OF PORTIONS OF THE FOLLOWING PLATS IN FRENCHMAN'S CREEK P.U.D.: PLAT No. 1, AS RECORDED IN P.B. 30, PGS. 241-243; PORTIONS OF TRACT "Z", PLAT No. 2, AS RECORDED IN P.B. 35, PGS. 71-75; AND PORTIONS OF TRACT "A", PLAT No. 6 AS RECORDED IN P.B. 44, PGS. 133-137; ALL RECORDED IN THE PUBLIC RECORDS OF PALM BEACH COUNTY, FLORIDA. TOGETHER WITH OTHER LANDS LYING AND BEING IN SECTION 30, TOWNSHIP 41 SOUTH, RANGE 43 EAST, PALM BEACH COUNTY, FLORIDA.



30/41/43  
SUBDIVISION Frenchman's Creek  
PAGE 41  
FLOOD ZONE B FLOOD MAP 1998  
ZONING  
ZIP CODE 33410

0248-002

REPLAT OF FRENCHMAN'S CREEK PLAT NO. 1

WILLIAM S. BRADY, INC.  
CONSULTING ENGINEERS, LAND PLANNERS & SURVEYORS  
CORPORATE AIA LAKE PARK

F.G.	NO. 86-003 "J"	PG.
R.R.	DATE APRIL, 1986	86-003 "J"
REF.		SHEET 3 OF 3

NOTE  
THE UNDERLYING PLAT NO. 1  
HAS BEEN ABANDONED BY  
O.R.B. 3986 AT PAGE 1305.

56/42

PLAN HOLD CORPORATION • IRVINE, CALIFORNIA  
RECORDED BY NUMBER 07548  
POSITION LOC. BY PRINT OR THIS LINE