

-Island Court At Boca West-

-Lying In Section Nine, Township Forty Seven South, Range Forty Two East, Palm Beach County, Florida-

July, A.D., Nineteen Hundred Eighty Six

Sheet Three Of Five

Tract "L"
 (The Water Management Tract And Drainage Easement)
 As The Perpetual Maintenance Obligation Of
 The Boca West Maintenance Association, Inc., Its Successors And Assigns
 Without Recourse To Palm Beach County, Florida.

-Unplatted-

69

State of Florida)
 County of Palm Beach) SS

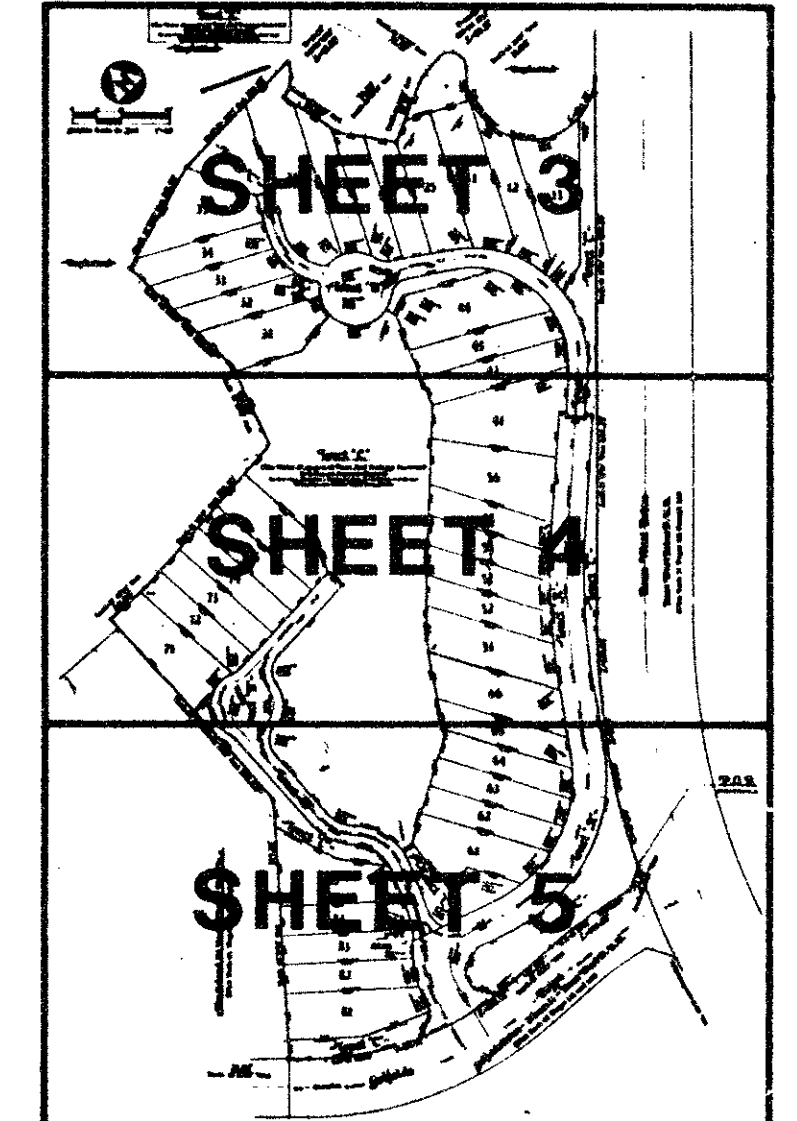
This Plat was filed for record
 at _____ day of _____
 A.D., 1986, and
 duly recorded in Plat Book
 on Pages thru _____

John B. Dunkle,
 Clerk of the Circuit Court.

By: _____
 Deputy Clerk

"Seal"
 John B. Dunkle, Clerk
 Of The Circuit Court of
 Palm Beach County

Handwritten notes:
 56/69
 1986



-KEY MAP-
not to scale

"Match Line"
 See Sheet 4 of 5

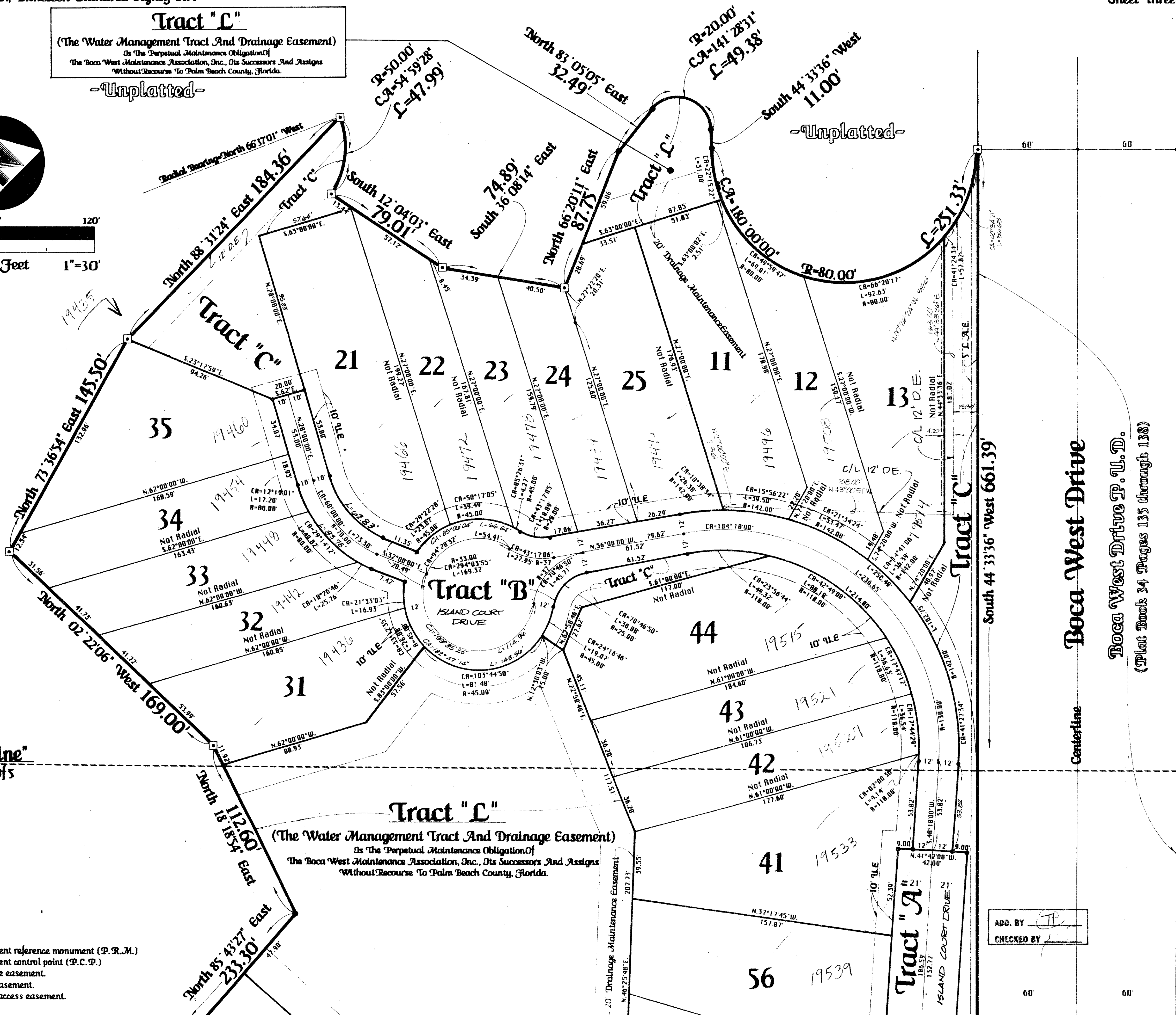
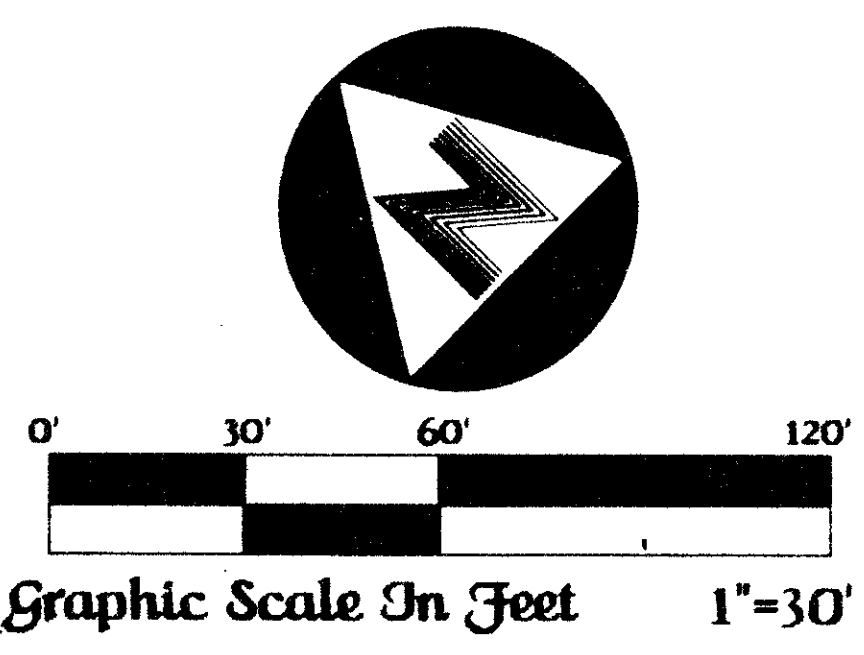
0214-007
 56/69

This instrument was prepared by Wm. R. Van Campen, R.L.S.,
 in and for the offices of Bench Mark Land Surveying and
 Mapping, Inc., Four Points Centre, 50 South Military Trail,
 Suite 200, West Palm Beach, Florida, 33415 (305) 689-2111

BENCH MARK
 land surveying and mapping, inc.
 WEST PALM BEACH, FLORIDA

-Record Plat-
-Island Court At Boca West-

Sheet Three Of Five



- Legend :**
- ⊙ - Denotes a permanent reference monument (P.R.M.)
 - ⊙ - Denotes a permanent central point (P.C.P.)
 - D.E. - Denotes a drainage easement.
 - U.E. - Denotes a utility easement.
 - L.A.E. - Denotes a limited access easement.

ADD. BY *JD*
 CHECKED BY _____

PLAN HOLD CORPORATION • IRVINE, CALIFORNIA
 REORDER BY NUMBER 07548
 PLAN HOLD CORPORATION • IRVINE, CALIFORNIA
 REORDER BY NUMBER 07548
 PLAN HOLD CORPORATION • IRVINE, CALIFORNIA
 REORDER BY NUMBER 07548