

State of Florida )  
County of Palm Beach )

This Plat was filed for record  
at this day of  
A.D., 1986, and  
duly recorded in Plat Book  
on Pages thru

John B. Dunkle,  
Clerk of the Circuit Court.  
By: Deputy Clerk

P.O.B.  
(Point Of Beginning)

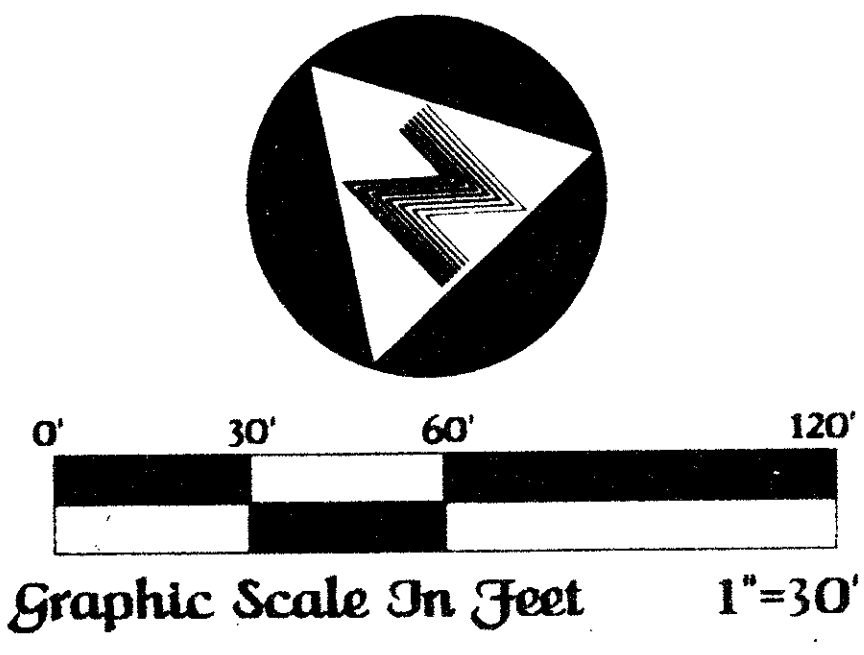
"Seal"  
John B. Dunkle, Clerk  
Of The Circuit Court Of  
Palm Beach County

# -Island Court At Boca West-

-Lying In Section Nine, Township Forty Seven South, Range Forty Two East, Palm Beach County, Florida-

July, A.D., Nineteen Hundred Eighty Six  
"Match Line"  
See Sheet 4 Of 5

Sheet Five Of Five  
"Match Line"  
See Sheet 4 Of 5



### Surveyor's Notes:

- Bearings shown hereon are based on those shown on Boca West Drive, P.U.D., according to the Plat thereof, as recorded in Plat Book 34, pages 135 through 138, inclusive, Public Records, Palm Beach County, Florida.
- Lot lines and/or boundary lines which intersect a curve are radial to said curve unless otherwise noted.

### General Notes:

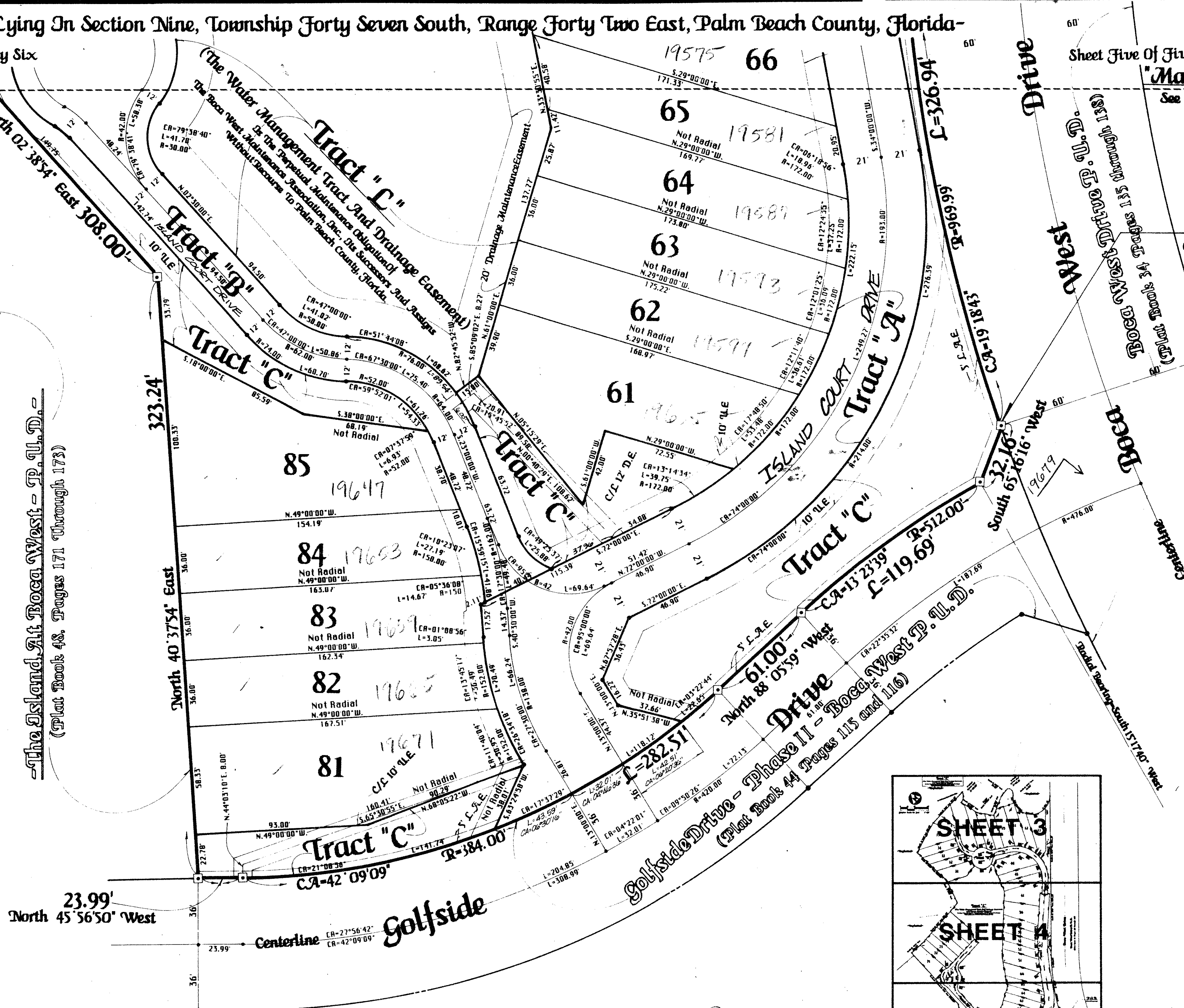
- Building setback lines, shall be as required by current Palm Beach County Zoning Regulations.

### Easement Notes:

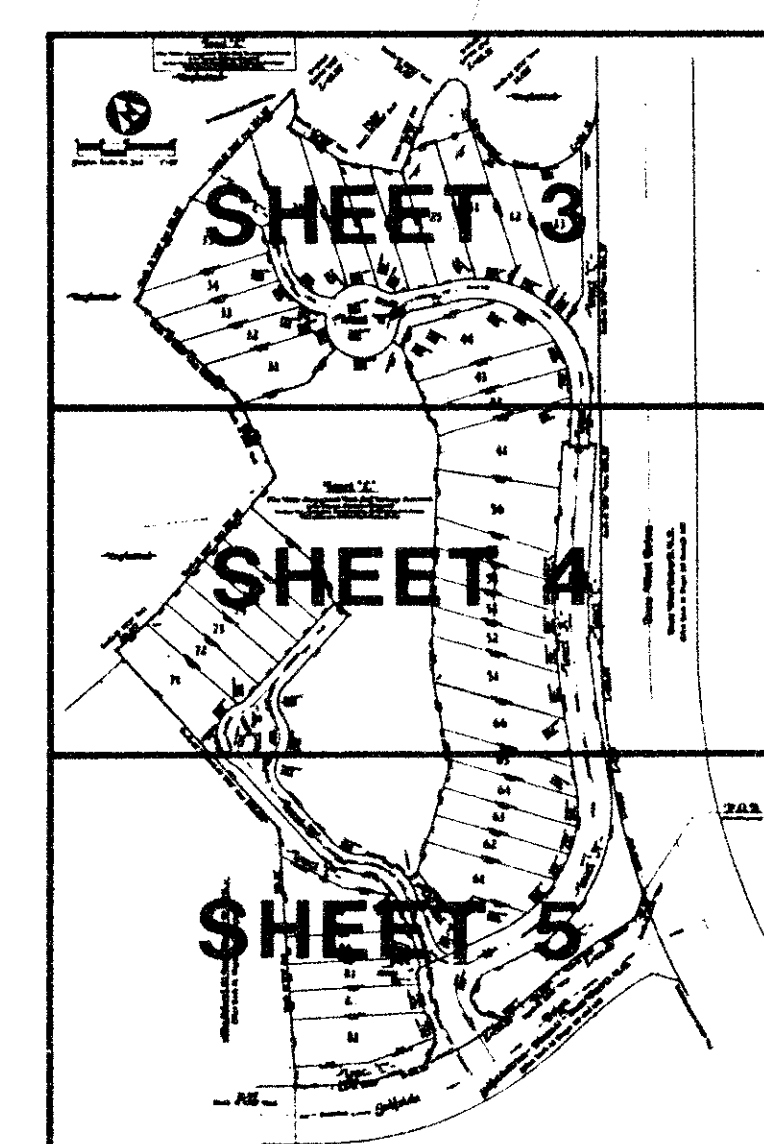
- There shall be no buildings, or other structures, placed on utility easements.
- There shall be no buildings, or any kind of construction, or trees, or shrubs, placed on drainage easements.
- Approval of landscaping on utility easements other than water and sewer, shall be only with the approval of all utilities occupying same.
- In instances where drainage and utility easement intersect, the areas within the intersection are drainage and utility easements. Construction and maintenance of utility facilities shall not interfere with the drainage facilities within these areas of intersection.

### Legend:

- - Denotes a permanent reference monument (P.R.M.)
- - Denotes a permanent control point (P.C.P.)
- D.E. - Denotes a drainage easement.
- U.E. - Denotes a utility easement.
- L.A.E. - Denotes a limited access easement.



-The Island At Boca West - P.U.D. -  
(Plat Book 48, Pages 171 Through 173)



ADD. BY [Signature]  
CHECKED BY [Signature]

0214-007  
56/71

This instrument was prepared by Wm. R. Van Campen, R.L.S., in and for the offices of Bench Mark Land Surveying and Mapping, Inc., Four Points Centre, 50 South Military Trail, Suite 200, West Palm Beach, Florida, 33415 (305) 689-2111

**BENCH MARK**  
land surveying and mapping, inc.

-Record Plat-  
-Island Court At Boca West-