

AMENDED PLAT OF A PORTION

OF

BULKHEAD LINE

IN NORTH END OF THE WATERS OF LAKE WORTH

AS RECORDED IN PLAT BOOK 26, PAGE 135

LOCATED IN SECTIONS 3&4, TWP. 42S, RGE. 43 E

PALM BEACH COUNTY, FLORIDA

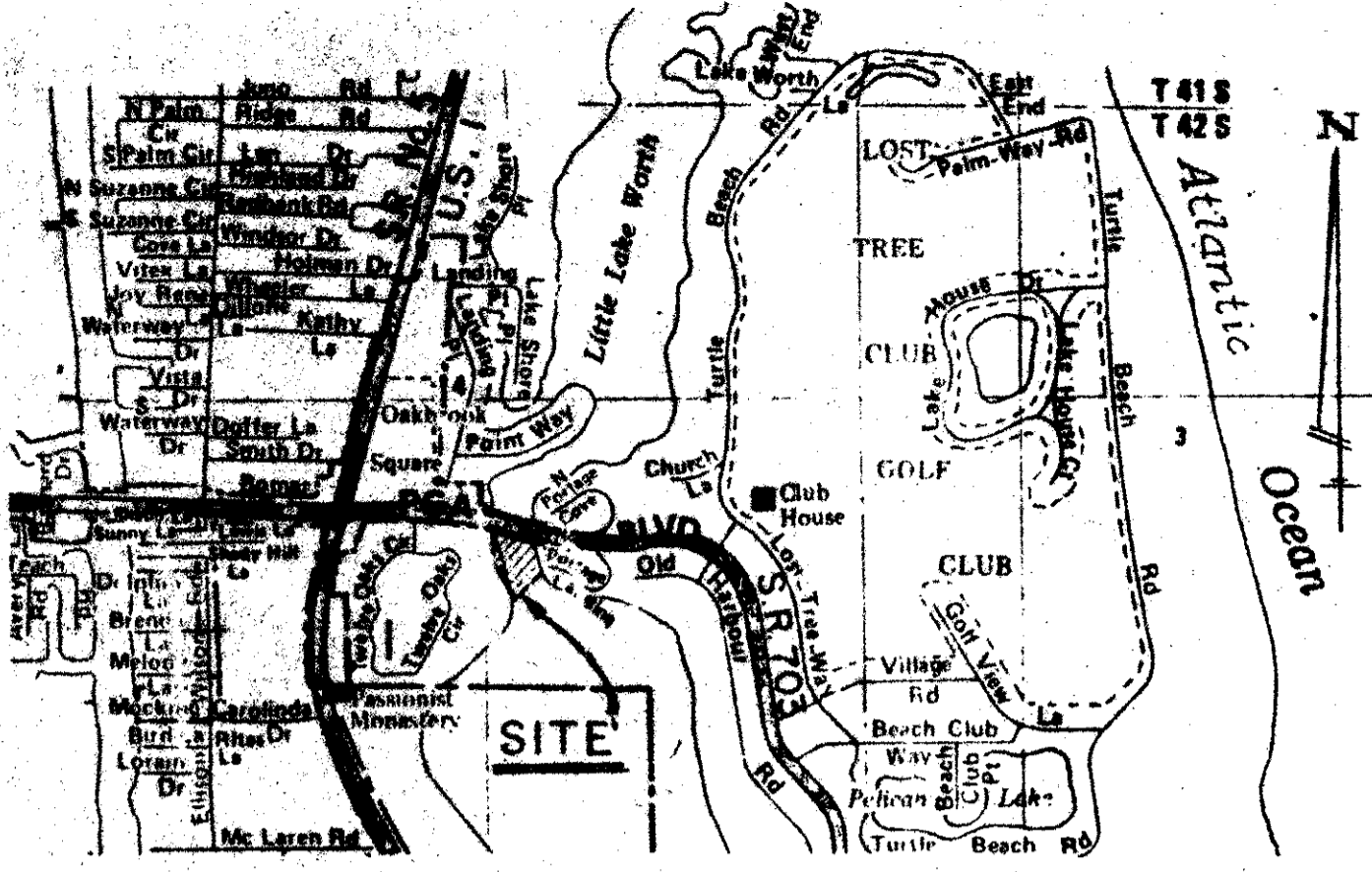
SHEET 1 OF 1

SEPTEMBER, 1986

82

COUNTY OF PALM BEACH STATE OF FLORIDA This Plat was filed for record at 2:38 P.M. this 2nd day of April 1987 and duly recorded in Plat Book No. 56 on page 82 JOHN B. DUNKLE, Clerk, Circuit Court By: Barbara A. West D.C.

34/42/43 SUBDIVISION Bulkhead Line BOOK 56 PAGE 82 FLOOD ZONE A7E1 FLOOD MAP 1318 QUAD 1-13 ZONING SE ZIP CODE 33408 PUD NAME



LOCATION SKETCH NOT TO SCALE

STATE OF FLORIDA COUNTY OF PALM BEACH

KNOW ALL MEN BY THESE PRESENTS, THAT THE BOARD OF COUNTY COMMISSIONERS OF PALM BEACH COUNTY, FLORIDA, HAS CAUSED THIS PLAT TO BE PREPARED FOR THE PURPOSE OF REDEFINING THE BULKHEAD LINE ALONG THE EASTERLY AND WESTERLY SHORE LINE IN THE NORTH END OF THE WATERS OF LAKE WORTH, PALM BEACH COUNTY, FLORIDA, SAID BULKHEAD LINE BEING MORE PARTICULARLY DESCRIBED AS FOLLOWS, TO WIT:

COMMENCING AT THE POINT OF INTERSECTION OF THE BULKHEAD LINE RECORDED IN PLAT BOOK 26, PAGE 135, PUBLIC RECORDS OF PALM BEACH COUNTY, FLORIDA, WITH THE NORTH LINE OF LOT 1, PORTAGE LANDING AS RECORDED IN PLAT BOOK 32, PAGES 143 AND 144, PUBLIC RECORDS OF PALM BEACH COUNTY, FLORIDA; THENCE NORTH 75°54'30" WEST, ALONG THE SOUTHERLY RIGHT-OF-WAY LINE OF A-1-A (STATE ROAD 703), A DISTANCE OF 44.65 FEET TO THE POINT OF BEGINNING (P.O.B.); THENCE FROM THE POINT OF BEGINNING ALONG THE FOLLOWING COURSES SOUTH 01°16'15" EAST A DISTANCE OF 38.63 FEET; THENCE SOUTH 29°03'25" WEST A DISTANCE OF 80.53 FEET; THENCE SOUTH 15°45'11" WEST A DISTANCE OF 76.42 FEET; THENCE SOUTH 26°24'27" EAST A DISTANCE OF 56.84 FEET; THENCE SOUTH 62°50'30" EAST A DISTANCE OF 54.56 FEET; THENCE SOUTH 82°13'52" EAST A DISTANCE OF 28.60 FEET; THENCE SOUTH 53°37'07" EAST A DISTANCE OF 13.99 FEET TO A POINT ON THE EAST BULKHEAD LINE RECORDED IN PLAT BOOK 26, PAGE 135, PUBLIC RECORDS OF PALM BEACH COUNTY, FLORIDA; (THE PRECEDING COURSES ARE COINCIDENT WITH OR EASTERLY OF THE WEST LINE OF PROPERTY CONVEYED TO ELIZABETH G. BERST BY THE BOARD OF TRUSTEES OF THE INTERNAL IMPROVEMENT TRUST FUND OF THE STATE OF FLORIDA, RECORDED IN OFFICIAL RECORD BOOK 4822, PAGES 674 AND 675); THENCE SOUTH 15°58'11" WEST A DISTANCE OF 241.99 FEET ALONG A TIE LINE TO A POINT ON THE WEST BULKHEAD LINE, SAME POINT BEING THE P.I. OF A CURVE WITH A RADIUS OF 259.58 FEET RECORDED IN PLAT BOOK 26, PAGE 135; THENCE NORTH 39°26'17" WEST A DISTANCE OF 202.97 FEET TO A POINT ON THE MEAN HIGH WATER LINE AS SHOWN ON THE PLAT OF TWELVE OAKS, RECORDED IN PLAT BOOK 31, PAGES 48 AND 49, PUBLIC RECORDS OF PALM BEACH COUNTY, FLORIDA; THENCE ALONG THE SAID AFOREMENTIONED MEAN HIGH WATER LINE ON THE FOLLOWING COURSES NORTH 34°59'30" WEST A DISTANCE OF 155.85 FEET; THENCE NORTH 03°45'55" EAST A DISTANCE OF 133.46 FEET; THENCE NORTH 27°12'30" EAST A DISTANCE OF 116.81 FEET; THENCE SOUTH 83°47'31" EAST, ALONG A TIE LINE A DISTANCE OF 169.36 FEET TO THE POINT OF BEGINNING.

NOTES:

- PERMANENT REFERENCE MONUMENTS (P.R.M.'s) ARE DESIGNATED THUS: [Symbol] BEARINGS CITED HEREIN ARE IN THE MERIDIAN OF THE PLAT OF PORTAGE LANDING (P.B. 32, Pgs. 143 and 144). [Symbol] DESIGNATES LAND RELEASE TO ELIZABETH G. BERST BY T.I.I.F. RECORDED IN BOOK 4822, PAGES 0674 & 0675.

COUNTY APPROVALS

COUNTY ENGINEER THIS PLAT IS HEREBY APPROVED FOR RECORD THIS 31 DAY OF March A.D. 1986 By: Herbert F. Kahlert, Engineer Palm Beach County, Florida

SURVEYOR'S CERTIFICATION

I HEREBY CERTIFY THAT THE PLAT SHOWN HEREON IS A TRUE AND CORRECT REPRESENTATION OF A SURVEY, MADE UNDER MY RESPONSIBLE DIRECTION AND SUPERVISION, AND THAT SAID SURVEY IS ACCURATE TO THE BEST OF MY KNOWLEDGE AND BELIEF, AND THAT (P.R.M.'s) PERMANENT REFERENCE MONUMENTS HAVE BEEN PLACED AS REQUIRED BY LAW AND FURTHER THAT THE SURVEY DATA COMPLIES WITH ALL THE REQUIREMENTS OF CHAPTER 177, FLORIDA STATUTES, AS AMENDED AND ORDINANCES OF PALM BEACH COUNTY.

DATE: 12-9-86 By: Ward L. Mitzelfeld, P.L.S. FLA. CERTIFICATE No. 1632

IN WITNESS WHEREOF, THE SAID BOARD OF COUNTY COMMISSIONERS HAS CAUSED THESE PRESENTS TO BE SIGNED BY ITS CHAIRMAN AND ATTESTED BY THE CLERK OF THE CIRCUIT COURT AND ITS OFFICIAL SEAL ATTACHED HERETO THIS 31 DAY OF March, A.D. 1986

BOARD OF COUNTY COMMISSIONERS OF PALM BEACH COUNTY, FLORIDA Attest: Kathryn S. Miller, Clerk of the Circuit Court; Carol Roberts, Chair Board of County Commissioners

THIS INSTRUMENT WAS PREPARED BY WARD L. MITZELFELD, ROBERT E. OWEN & ASSOCIATES, INC., ENGINEERS, PLANNERS, SURVEYORS 2500 FLA-MANGO ROAD, WEST PALM BEACH, FLORIDA.

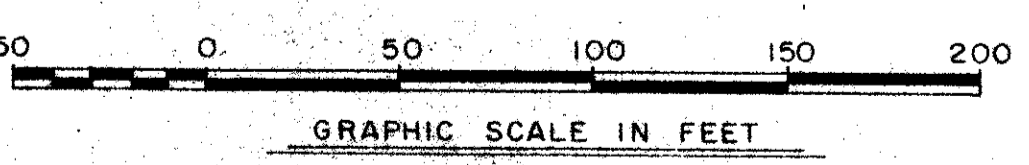
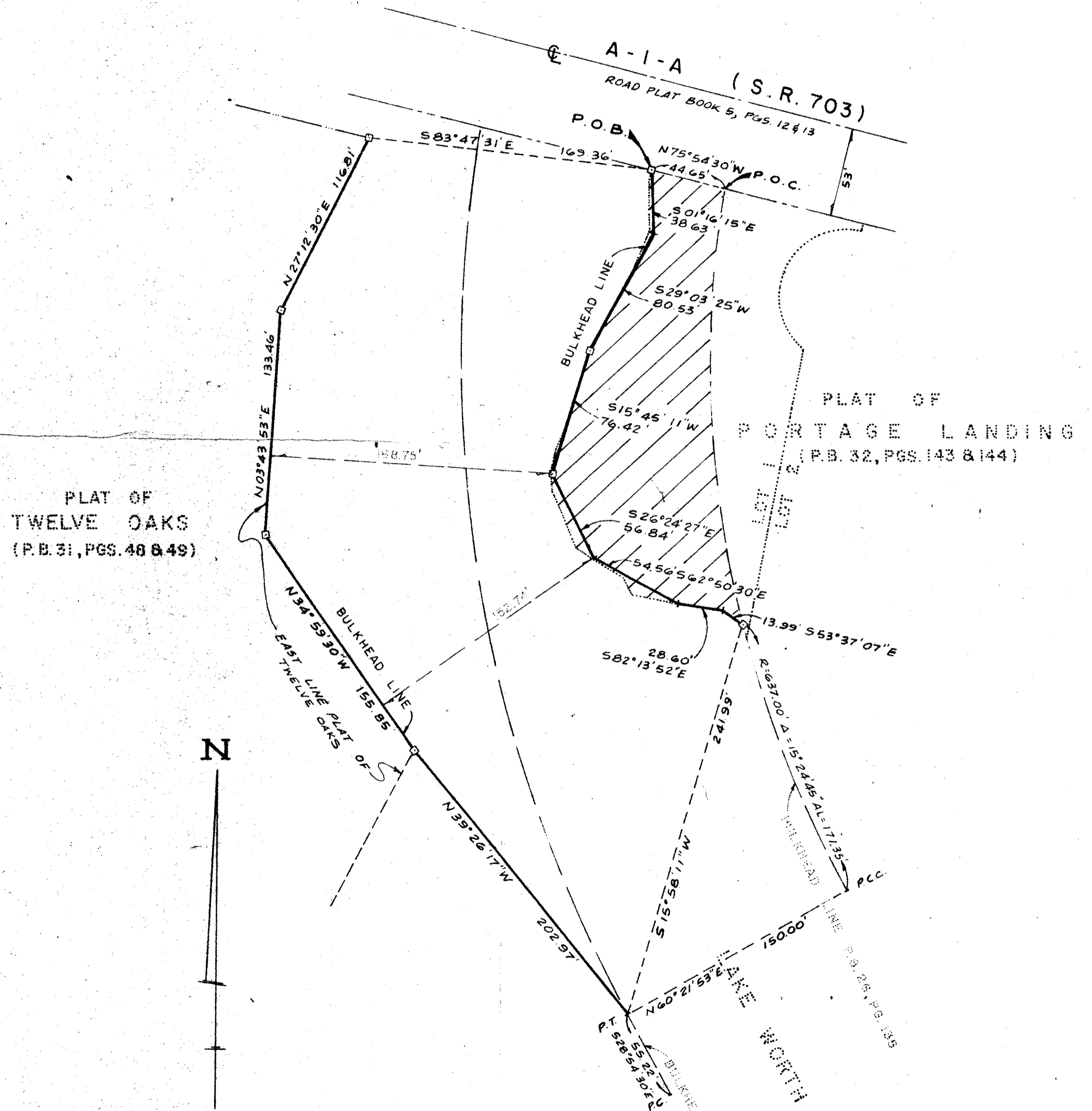


Table with 4 columns: Field Book No. B-229Pg.54 Design, Drawn L. BISPOTT Checked, ROBERT E. OWEN & ASSOCIATES, INC. ENGINEERS - PLANNERS - SURVEYORS WEST PALM BEACH FLORIDA, AMENDED PLAT OF A PORTION OF BULKHEAD LINE IN NORTH END OF THE WATERS OF LAKE WORTH, Job No. 86-1027 Scale 1" = 50' Date SEPT, 1986 Sheet 1 of 1 File No. BF-2003-A

