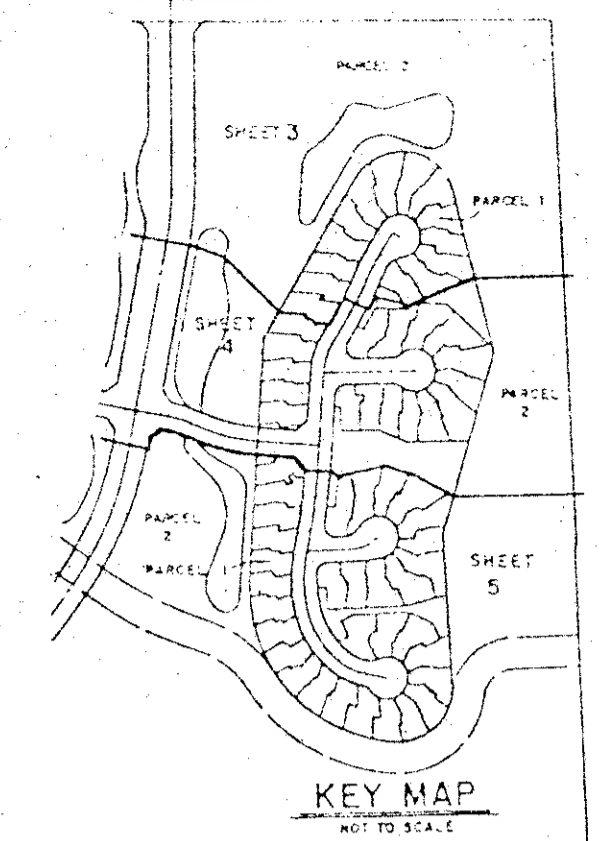


PLAN HOLD CORPORATION • IRVINE, CALIFORNIA
RECORDED BY NUMBER 07548

FAIRFIELD'S LACUNA PLAT 3

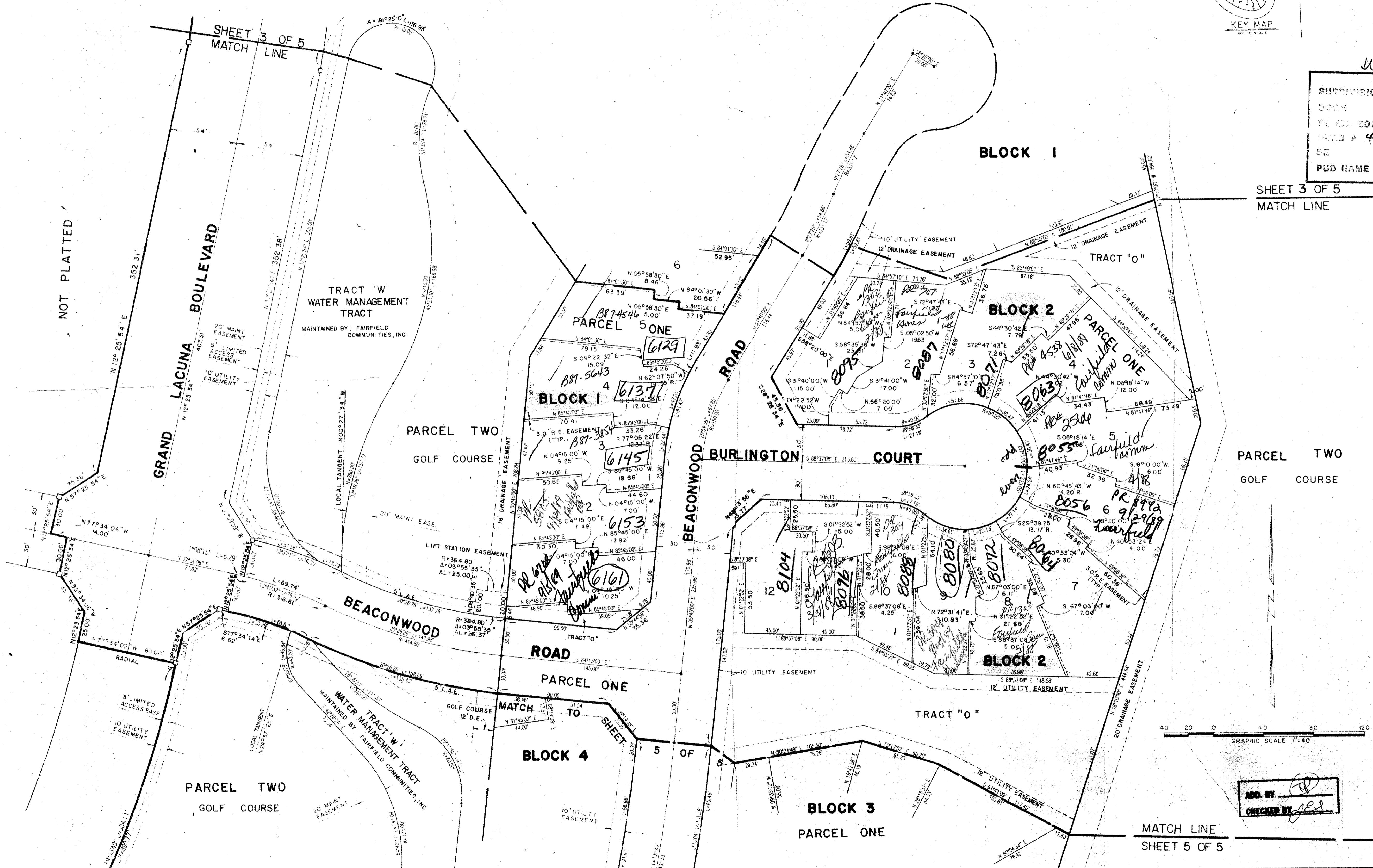
A PART OF BALMORAL COUNTRY CLUB P.U.D.
PALM BEACH COUNTY, FLORIDA
SHEET 4 OF 5 APRIL 1987



108

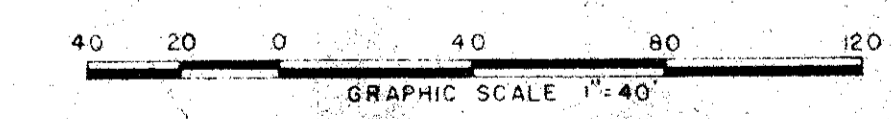
STATE OF FLORIDA
COUNTY OF PALM BEACH
This Plat was filed for record on
M. this day of 19
and duly recorded in Plat Book No.
on Page
John B. Dunkle, Clerk Circuit Court
By *[Signature]* D.C.

Submission # *7*
BOOK *56* PAGE *108*
FLORIDA ZONE *B* PLAT MAP # *1604*
PUD NAME *Plat 3*



SHEET 3 OF 5
MATCH LINE

PARCEL TWO
GOLF COURSE



ADD. BY
CHECKED BY

MATCH LINE
SHEET 5 OF 5

Ret. 81-233
0199-003
56/108

Landmark Surveying & Mapping Inc.
1551 FOREST HILL BOULEVARD
FT. LAUDERDALE, FLORIDA 33309

FAIRFIELD'S LACUNA PLAT 3