

SUN VALLEY II PUD.

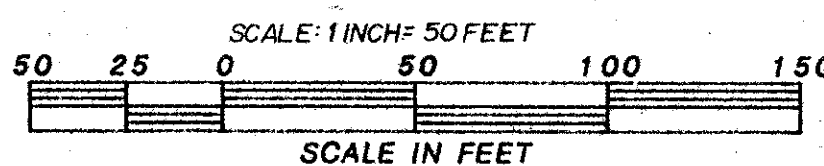
IN SECTIONS 22 & 23 TWP. 45S, RGE. 42E. INCLUDING A REPLAT OF
A PORTION OF BOYNTON GARDENS. (6-32 PALM BEACH CO.)

SHEET 2 OF 8

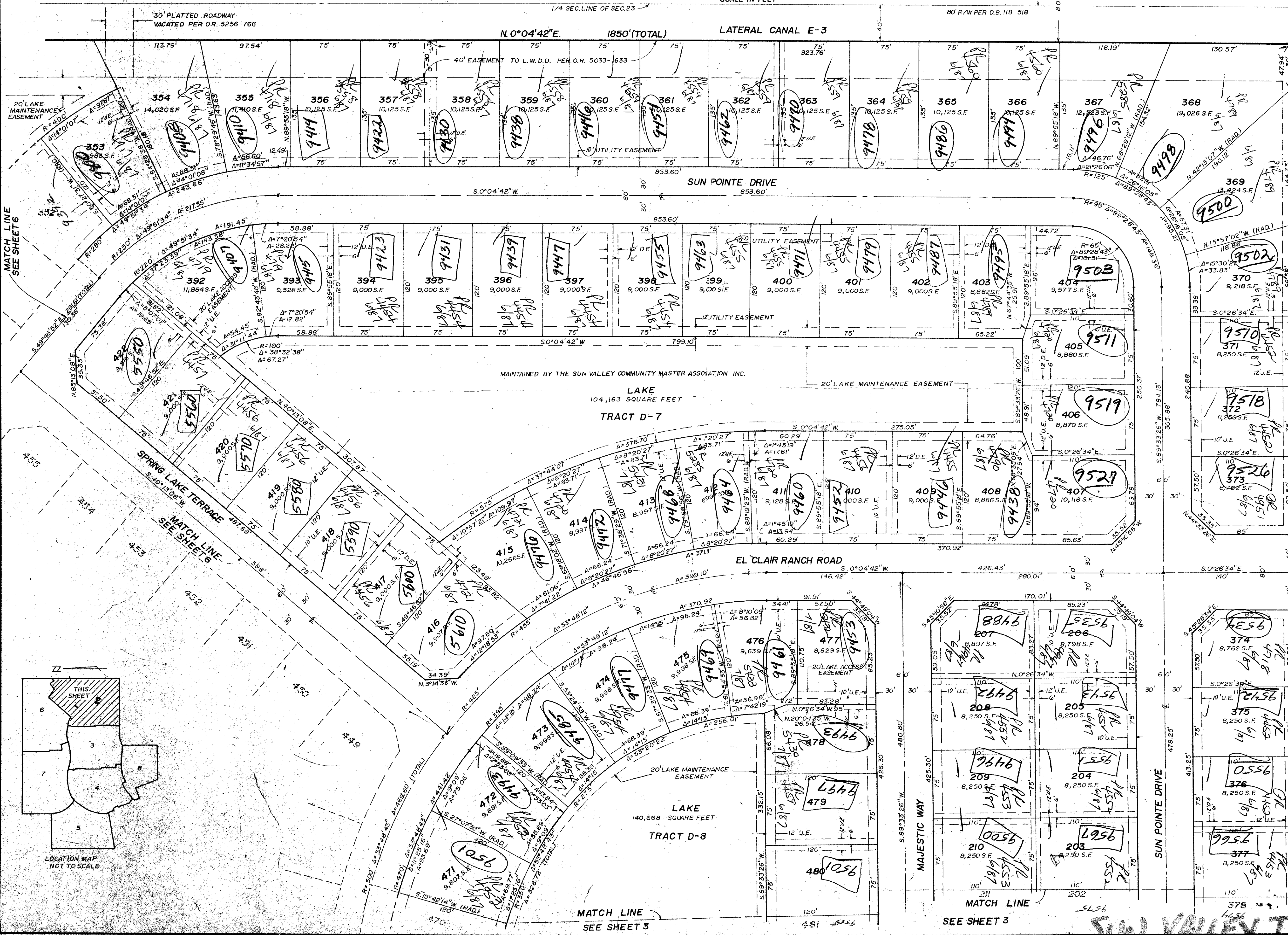
129

PALM BEACH COUNTY FLORIDA
SURVEYORS - ENGINEERS

WINNINGHAM & LIVELY, INC. FORT LAUDERDALE, FLORIDA



DEC. 1986.



SUBDIVISION # Sun Valley
 BLOCK # 50 PART 129
 PLANNING ZONE B
 ROAD # 35
 SE
 PUD NAME II
 22-423/45/42
 22-185A
 23-190A

UNPLATTED

1498-002

ADD. BY [Signature]
 CHECKED BY [Signature]

SUN VALLEY II

56/129

PLAN HOLD CORPORATION • IRVINE, CALIFORNIA
 RECORDED BY NUMBER 0734R
 APPROVED BY NUMBER 0734R

