

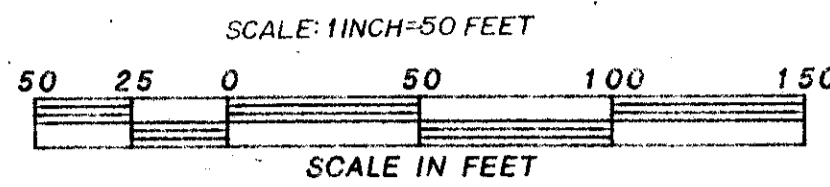
# SUN VALLEY II P.U.D.

IN SECTIONS 22 & 23 TWP. 45S, RGE. 42 E. INCLUDING A REPLAT OF  
A PORTION OF BOYNTON GARDENS (6-32 PALM BEACH CO.)

PALM BEACH COUNTY FLORIDA  
WINNINGHAM & LIVELY, INC. SURVEYORS - ENGINEERS FORT LAUDERDALE, FLORIDA

SHEET 3 OF 8

130

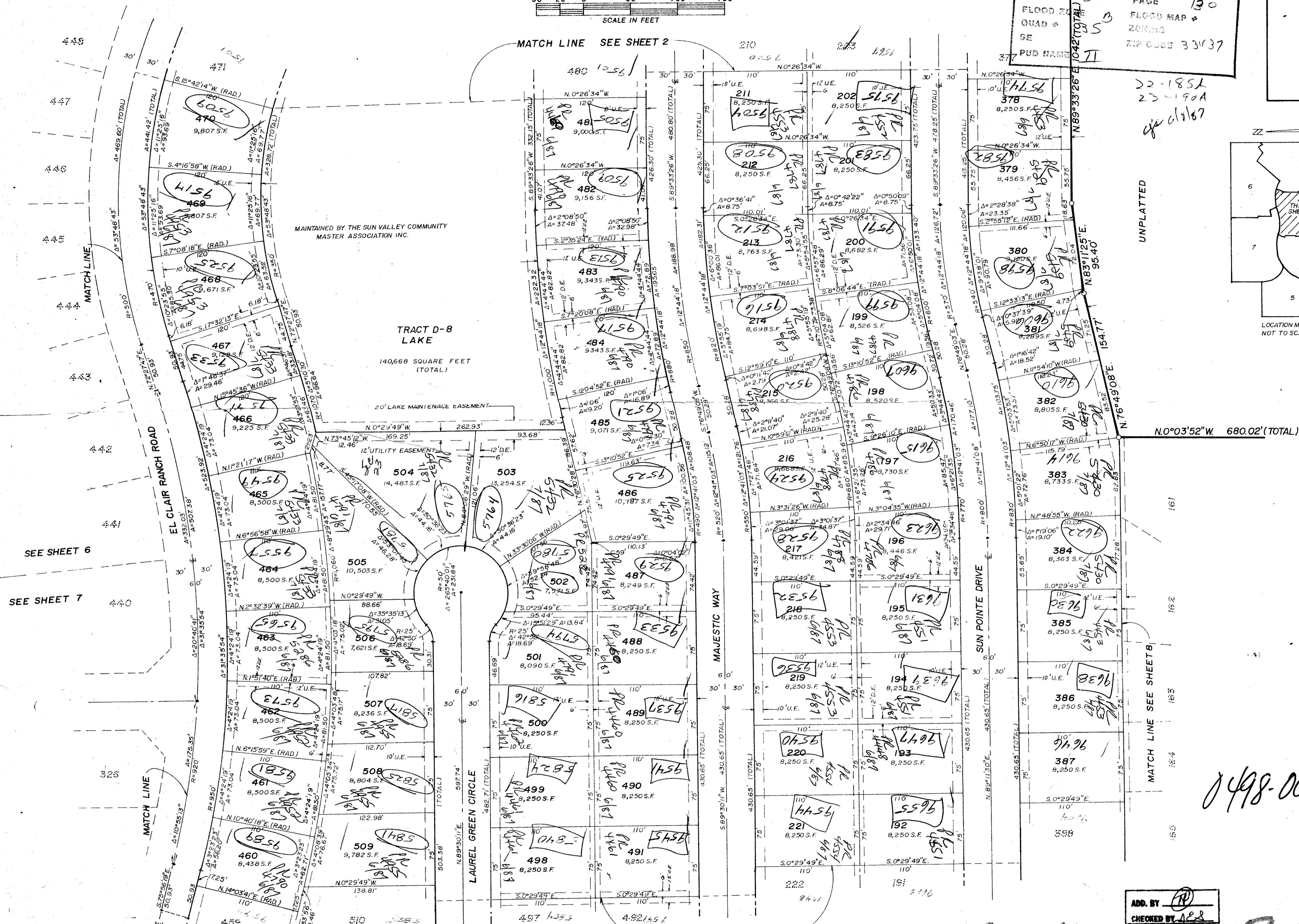
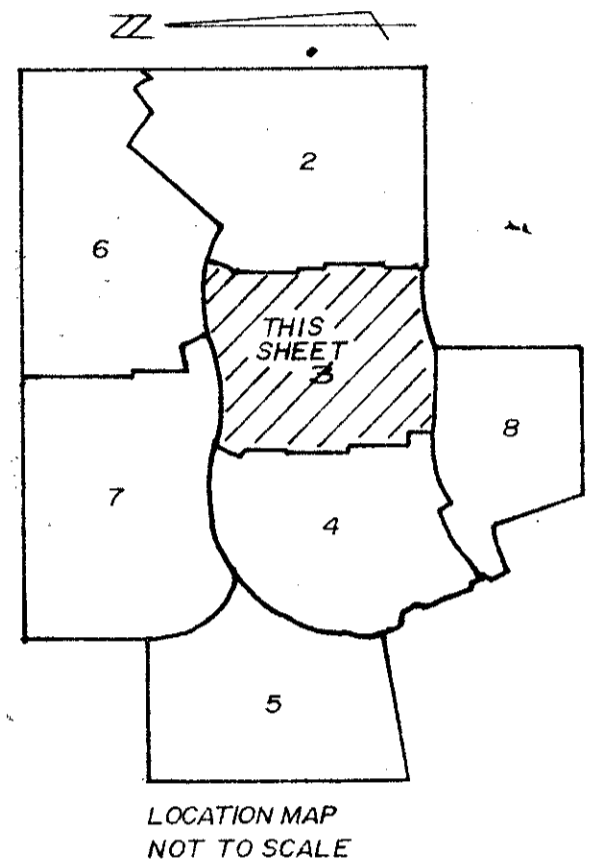


DATE: DEC. 1986



SUBDIVISION # *Sun Valley*  
BOOK SC PAGE 130  
FLOOD ZONE S B FLOOD MAP # 200102  
QUAD SE ZIP CODE 33437  
PUD NAME 1042(TOTAL)

*22-1851*  
*23-190A*  
*4/1/87*



SEE SHEET 6  
SEE SHEET 7

MATCH LINE SEE SHEET 2

MATCH LINE SEE SHEET 4

UNPLATTED

ADD. BY [Signature]  
CHECKED BY [Signature]

*SUN VALLEY II 50/130*

*0498-002*

PLAN HOLD CORPORATION • IRVINE, CALIFORNIA  
REGISTERED BY NUMBER 07548