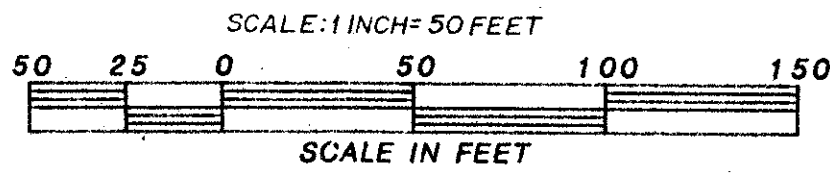


SUN VALLEY II P.U.D.

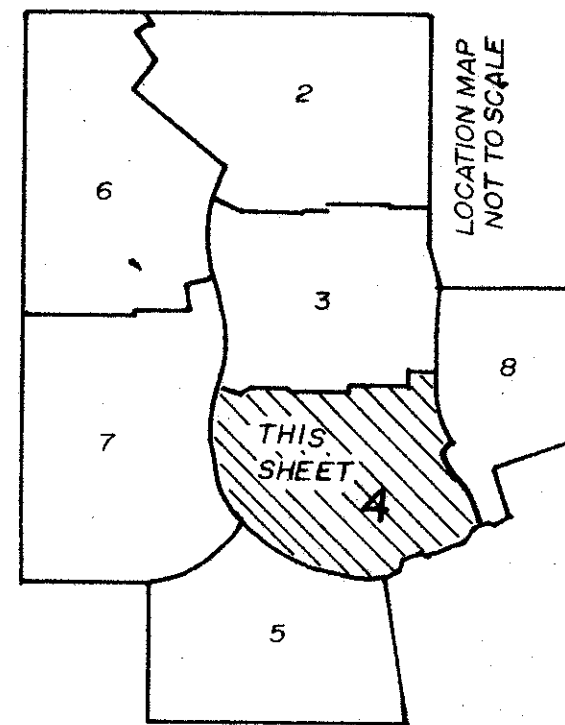
IN SECTIONS 22 & 23 TWP. 45S, RGE. 42E. INCLUDING A REPLAT OF
A PORTION OF BOYNTON GARDENS (6-32 PALM BEACH CO.)
PALM BEACH COUNTY FLORIDA
WINNINGHAM & LIVELY, INC. SURVEYORS - ENGINEERS FORT LAUDERDALE, FLORIDA

SHEET 4 OF 8

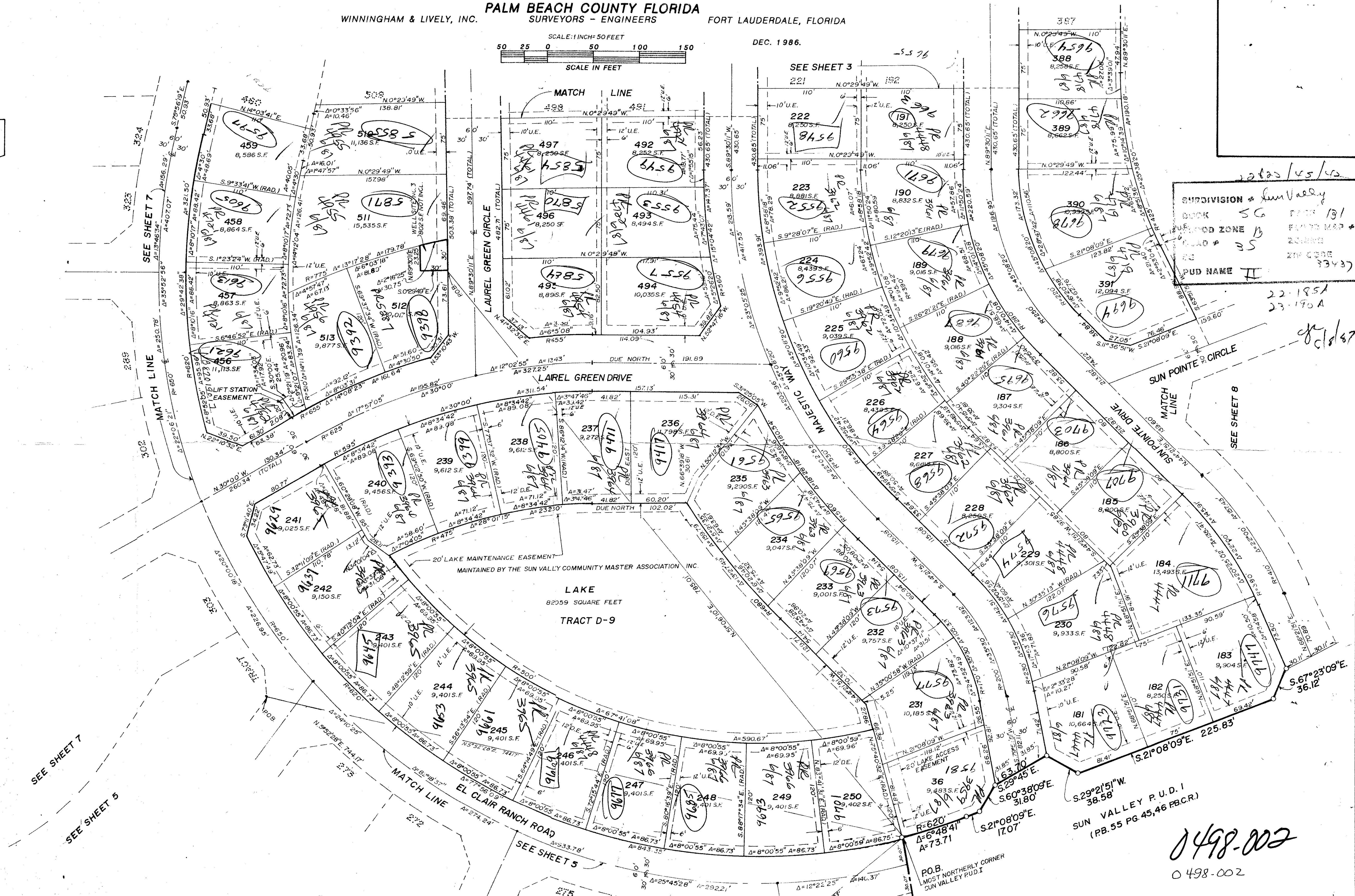
131



DEC. 1986.



PLAN-HOLD CORPORATION • IRVINE, CALIFORNIA
REGISTERED BY NUMBER 07594
PLAN-HOLD CORPORATION • IRVINE, CALIFORNIA
REGISTERED BY NUMBER 07594
PLAN-HOLD CORPORATION • IRVINE, CALIFORNIA
REGISTERED BY NUMBER 07594



2020/05/10

SUBDIVISION	Sun Valley
BOOK	56
PLAT NO.	131
ZONE	B
OWNER	WINNINGHAM & LIVELY
PLAT NAME	II

22-185A
23-190A
01/18/87

SUN VALLEY P.U.D. I
(PB. 55 PG. 45, 46 P.B.C.R.)

0498-002
0498-002

ADD. BY [Signature]
CHECKED BY [Signature]

SUN VALLEY II 56/131