

PLAN HOLD CORPORATION
IRVINE, CALIFORNIA
REORDER BY NUMBER 07341

PLAN HOLD CORPORATION
IRVINE, CALIFORNIA
REORDER BY NUMBER 07341

PLAN HOLD CORPORATION
IRVINE, CALIFORNIA
REORDER BY NUMBER 07341

PLAN HOLD CORPORATION
IRVINE, CALIFORNIA
REORDER BY NUMBER 07341

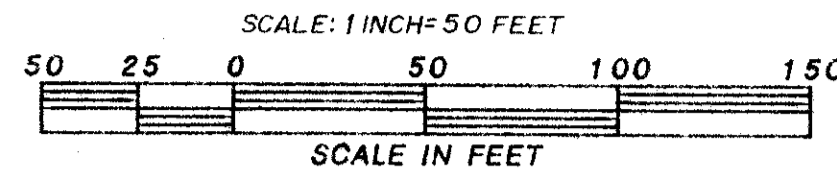
SUN VALLEY II PUD.

IN SECTIONS 22 & 23 TWP 45S, RGE. 42E. INCLUDING A REPLAT OF
A PORTION OF BOYNTON GARDENS (6-32 PALM BEACH CO.)

WINNINGHAM & LIVELY, INC. SURVEYORS - ENGINEERS FORT LAUDERDALE, FLORIDA

SHEET 8 OF 8

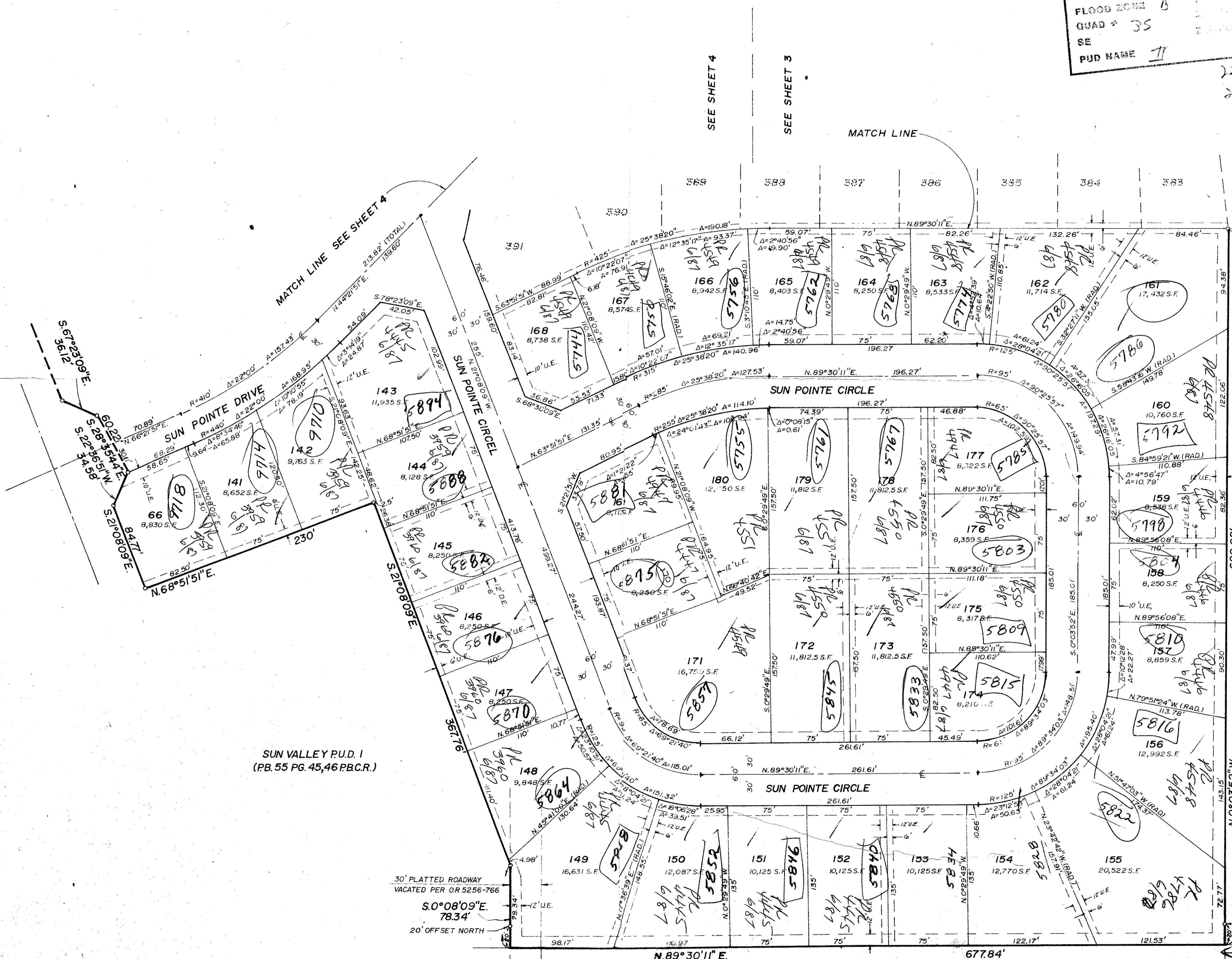
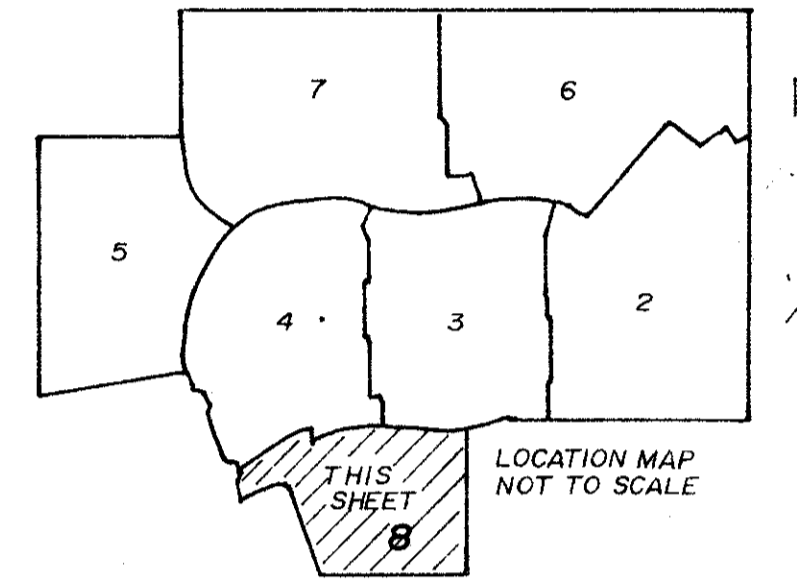
135



DEC. 1986.

22423/45/42
SUBMISSION # Sun Valley
BOOK 56 P. 135
FLOOD ZONE B
QUAD # 35
SE
PUD NAME II
22-1851
23-1904

clb/37



UNPLATTED

8498.202

ADD. BY [Signature]
CHECKED BY JER

SUN VALLEY II 50/135