

1/140  
 PLAN HOLD CORPORATION • IRVINE, CALIFORNIA  
 RECORDED BY NUMBER 07584  
 PLAN HOLD CORPORATION • IRVINE, CALIFORNIA  
 RECORDED BY NUMBER 07584  
 PLAN HOLD CORPORATION • IRVINE, CALIFORNIA  
 RECORDED BY NUMBER 07584

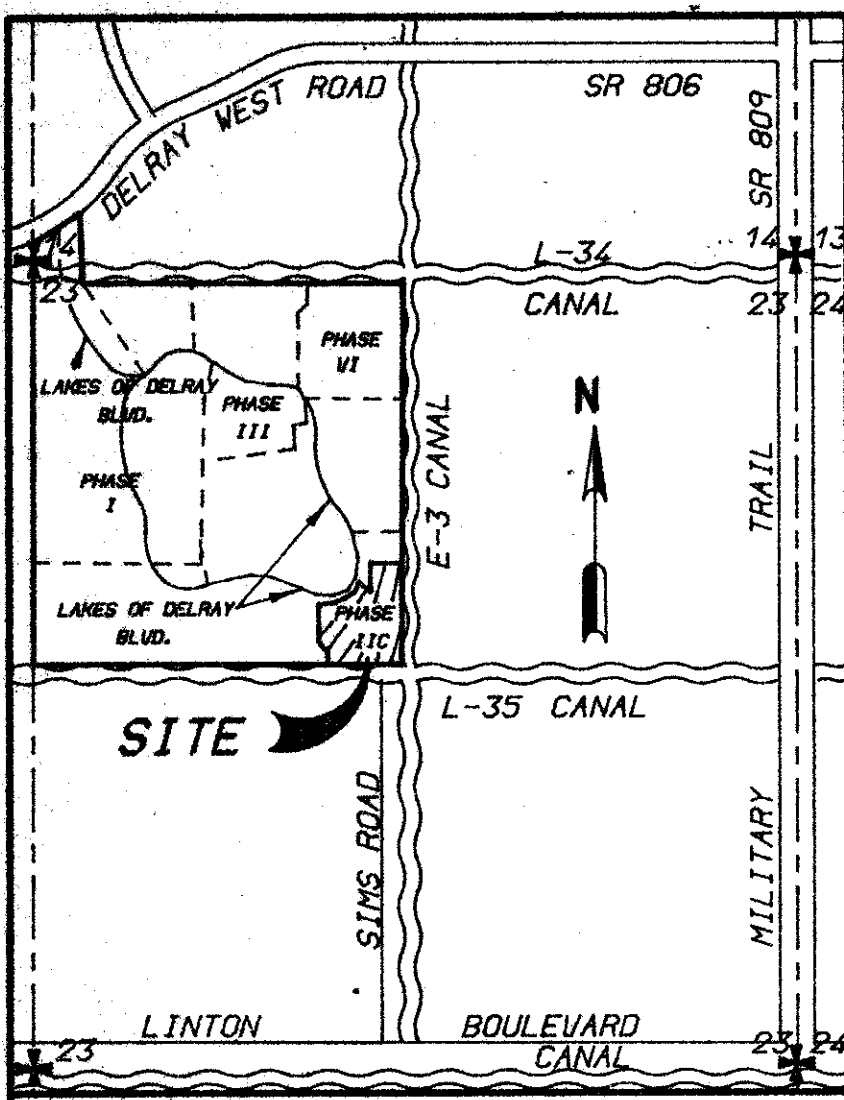
# PLAT NO. 11-C LAKES OF DELRAY

BEING A PORTION OF THE NORTHWEST ONE - QUARTER  
 OF SECTION 23, TOWNSHIP 46 SOUTH, RANGE 42 EAST  
 PALM BEACH COUNTY, FLORIDA

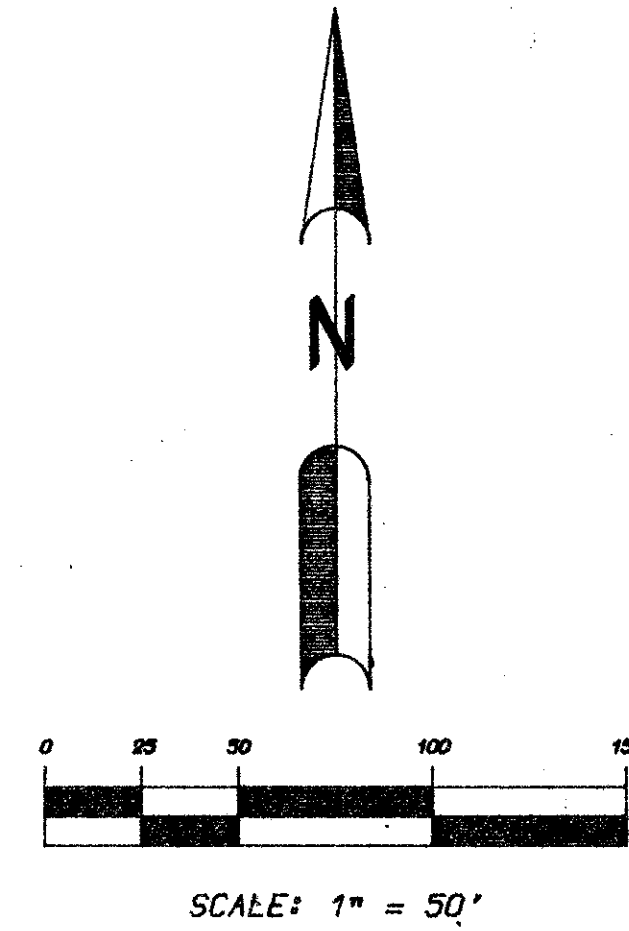
JULY, 1986

SHEET 2 OF 2 SHEETS

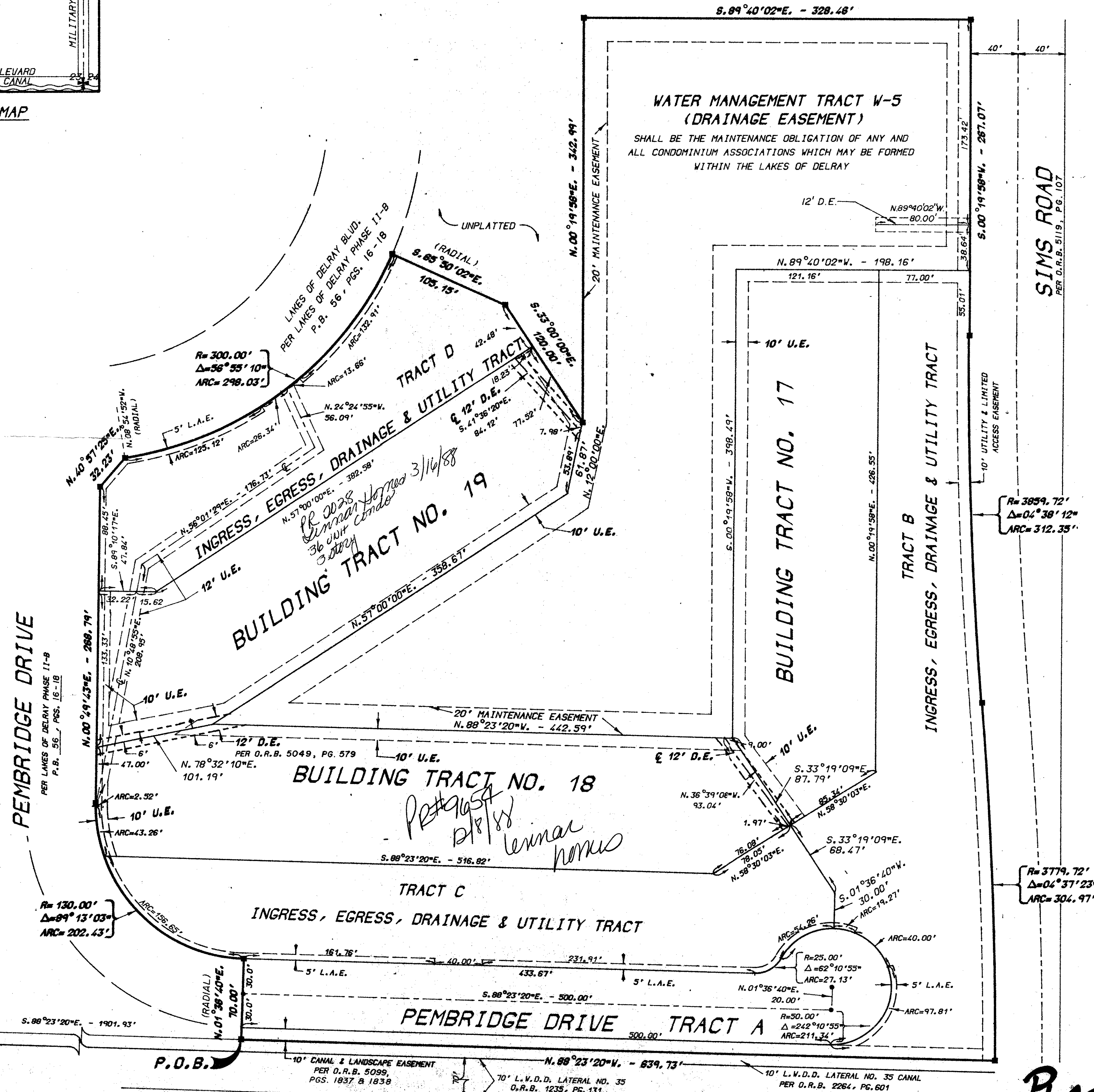
146



LOCATION MAP  
 NTS



TAZ 470 23/46/42  
 SUBDIVISION Lakes of Delray  
 BOOK 56 PAGE 146  
 FLOOD ZONE B FLOOD MAP # 220  
 QUAD # 37 ZONING  
 S.E. ZIP CODE 33445  
 PUD NAME PLOT # 11-C



**SURVEYOR'S NOTES:**

- 1.) ALL P.R.M.'s BEAR THE REGISTRATION NUMBER-3143 SHOWN THUS - ■
- 2.) THE BEARINGS SHOWN HEREON ARE BASED ON A BEARING OF N.00°05'05"E. ON THE WEST LINE OF SECT. 23-46-42 PER THE PLAT OF LAKES OF DELRAY - PLAT NO. ONE AS RECORDED IN PLAT BOOK 42, PGS. 46 AND 47, PUBLIC RECORDS OF PALM BEACH COUNTY, FLORIDA.
- 3.) BUILDING SETBACK LINES SHALL BE AS REQUIRED BY PALM BEACH COUNTY ZONING REGULATIONS.
- 4.) NO BUILDINGS OR ANY KIND OF CONSTRUCTION SHALL BE PLACED ON UTILITY OR DRAINAGE EASEMENTS.
- 5.) THERE SHALL BE NO TREES OR SHRUBS PLACED ON UTILITY EASEMENTS WHICH ARE PROVIDED FOR WATER AND SEWER USE OR UPON DRAINAGE EASEMENTS.
- 6.) LANDSCAPING ON OTHER UTILITY EASEMENTS SHALL BE ALLOWED ONLY AFTER CONSENT OF ALL UTILITY COMPANIES OCCUPYING SAME.
- 7.) ALL DRAINAGE EASEMENTS ARE 12' WIDE UNLESS OTHERWISE NOTED.
- 8.) THERE SHALL BE NO ABOVE GROUND APPURTANCES WHERE UTILITY EASEMENTS CROSS MAINTENANCE EASEMENTS.
- 9.) D.E. DENOTES DRAINAGE EASEMENT
- 10.) L.A.E. DENOTES LIMITED ACCESS EASEMENT
- 11.) • DENOTES PERMANENT CONTROL POINT (P.C.P.).

THIS INSTRUMENT PREPARED BY  
 LEO E. NOBLE P.L.S. 3143 STATE OF FLORIDA  
**LAWSON, NOBLE & ASSOCIATES, INC.**  
 ENGINEERS PLANNERS TESTING SURVEYORS  
 BOYNTON BEACH, FLORIDA

*None due*  
 267300

PLAT No. 11-C, LAKES OF DELRAY 50/146