

# PALM BEACH PARK OF COMMERCE, P.I.P.D., PLAT NO. 1

A PORTION OF PALM BEACH PARK OF COMMERCE, A P.I.P.D.

SITUATE IN SECTIONS 17, 18, & 19, TWP 41S, RGE 41E, PALM BEACH CO., FLORIDA  
BEING A PARTIAL REPLAT OF A PORTION OF "CALBUT GENPAR TRACT A"  
P. B. 45, PGS. 70 & 71, OF THE PUBLIC RECORDS OF PALM BEACH COUNTY, FLORIDA

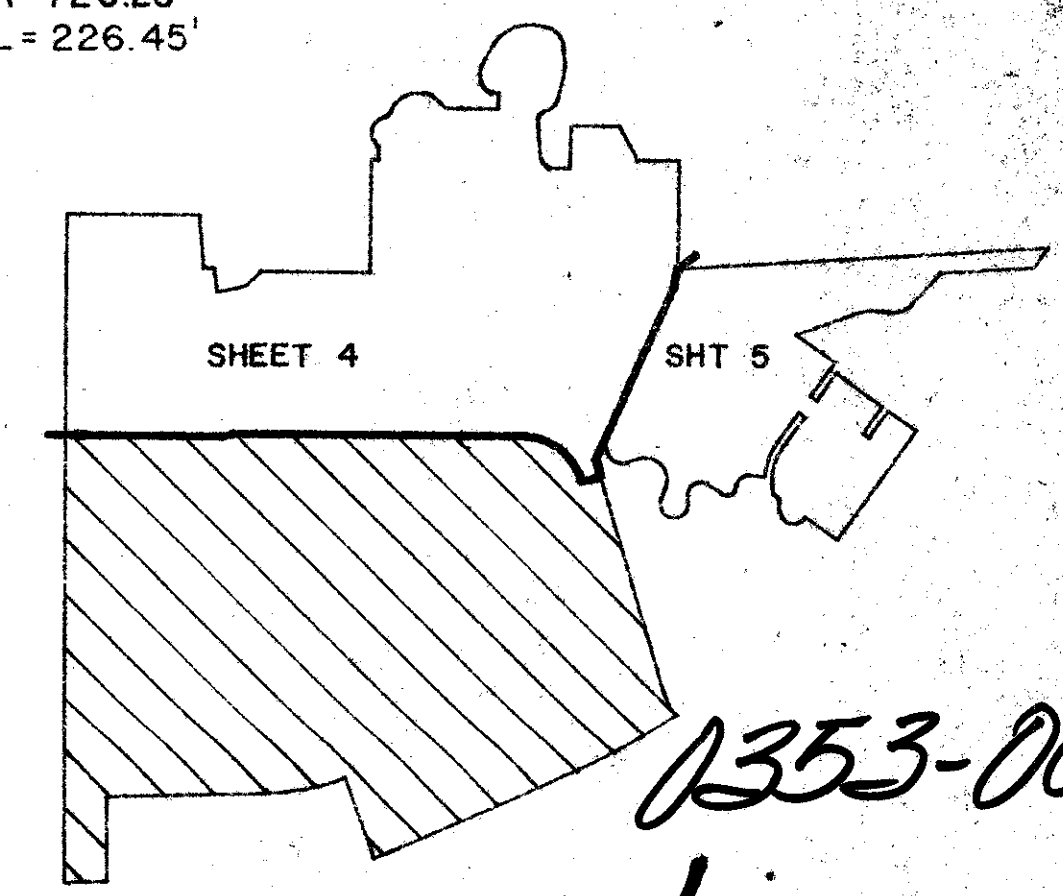
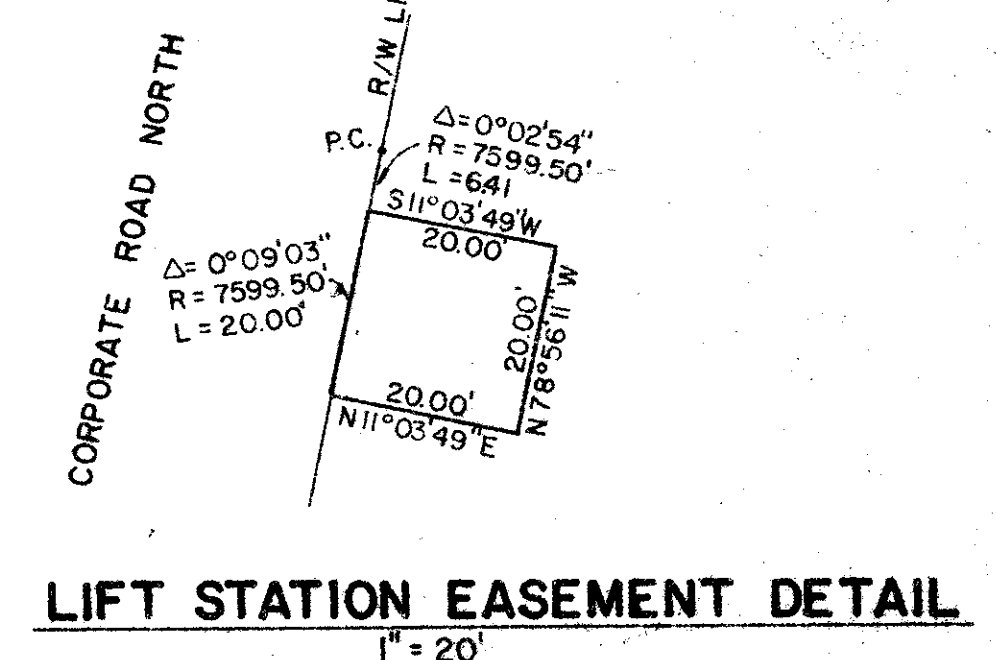
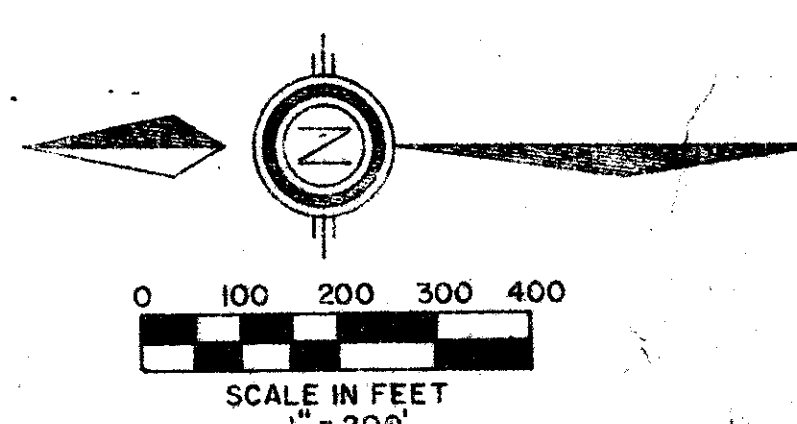
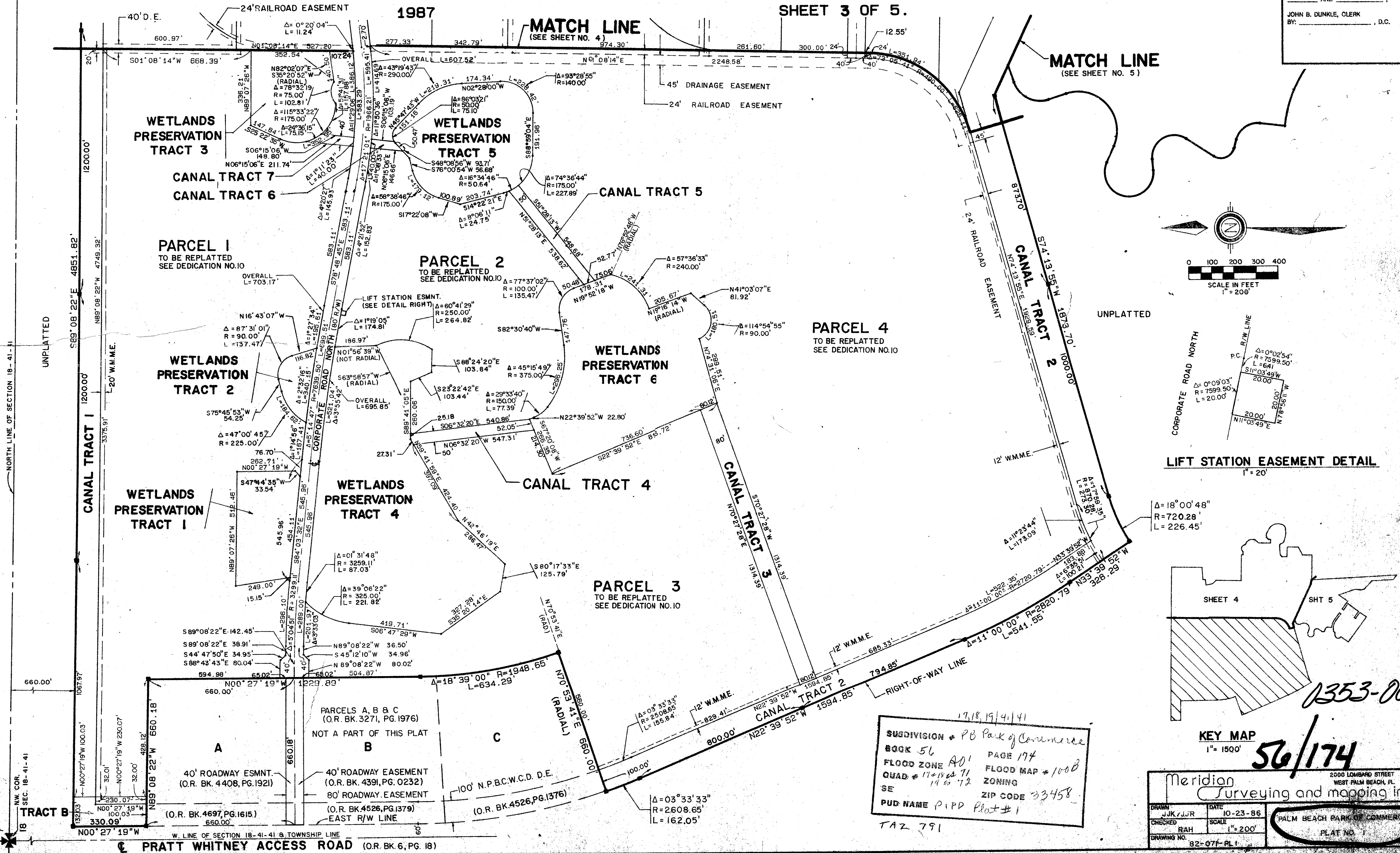
# 174

STATE OF FLORIDA  
COUNTY OF PALM BEACH  
THIS PLAN WAS FILED FOR  
RECORD \_\_\_\_\_ DAY OF \_\_\_\_\_  
AD. 198 \_\_\_\_\_ AND DULY RECORDED  
IN PLAT BOOK \_\_\_\_\_ ON PAGES  
\_\_\_\_\_ AND \_\_\_\_\_  
JOHN B. DUNKLE, CLERK  
BY: \_\_\_\_\_, D.C.

SHEET 3 OF 5.

**MATCH LINE**  
(SEE SHEET NO. 4)

**MATCH LINE**  
(SEE SHEET NO. 5)



17, 18, 19, 4, 1, 41  
**SUBDIVISION** \* PB Park of Commerce  
**BOOK** 56 PAGE 174  
**FLOOD ZONE** A01 FLOOD MAP \* 100B  
**QUAD** # 1101802 11 ZONING  
**SE** ZIP CODE 33458  
**PUD NAME** P.I.P.D. Plat # 1  
 TAZ 791

Meridian Surveying and mapping inc.		2000 LOMBARD STREET WEST PALM BEACH, FL.	
DRAWN JJK/JJR	DATE 10-23-86	CHECKED RAH	SCALE 1" = 200'
DRAWING NO. 82-071-PL 1		PALM BEACH PARK OF COMMERCE PLAT NO.	

PLAN HOLD CORPORATION • IRVINE, CALIFORNIA  
 REVISION BY NUMBER 075AR  
 PLAN HOLD CORPORATION • IRVINE, CALIFORNIA  
 REVISION BY NUMBER 075AR  
 PLAN HOLD CORPORATION • IRVINE, CALIFORNIA  
 REVISION BY NUMBER 075AR  
 PLAN HOLD CORPORATION • IRVINE, CALIFORNIA  
 REVISION BY NUMBER 075AR