

PALM BEACH PARK OF COMMERCE, P.I.P.D., PLAT NO. 1

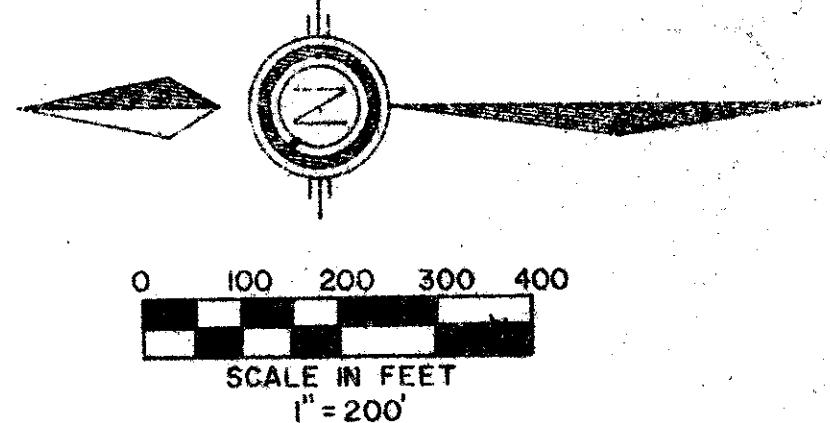
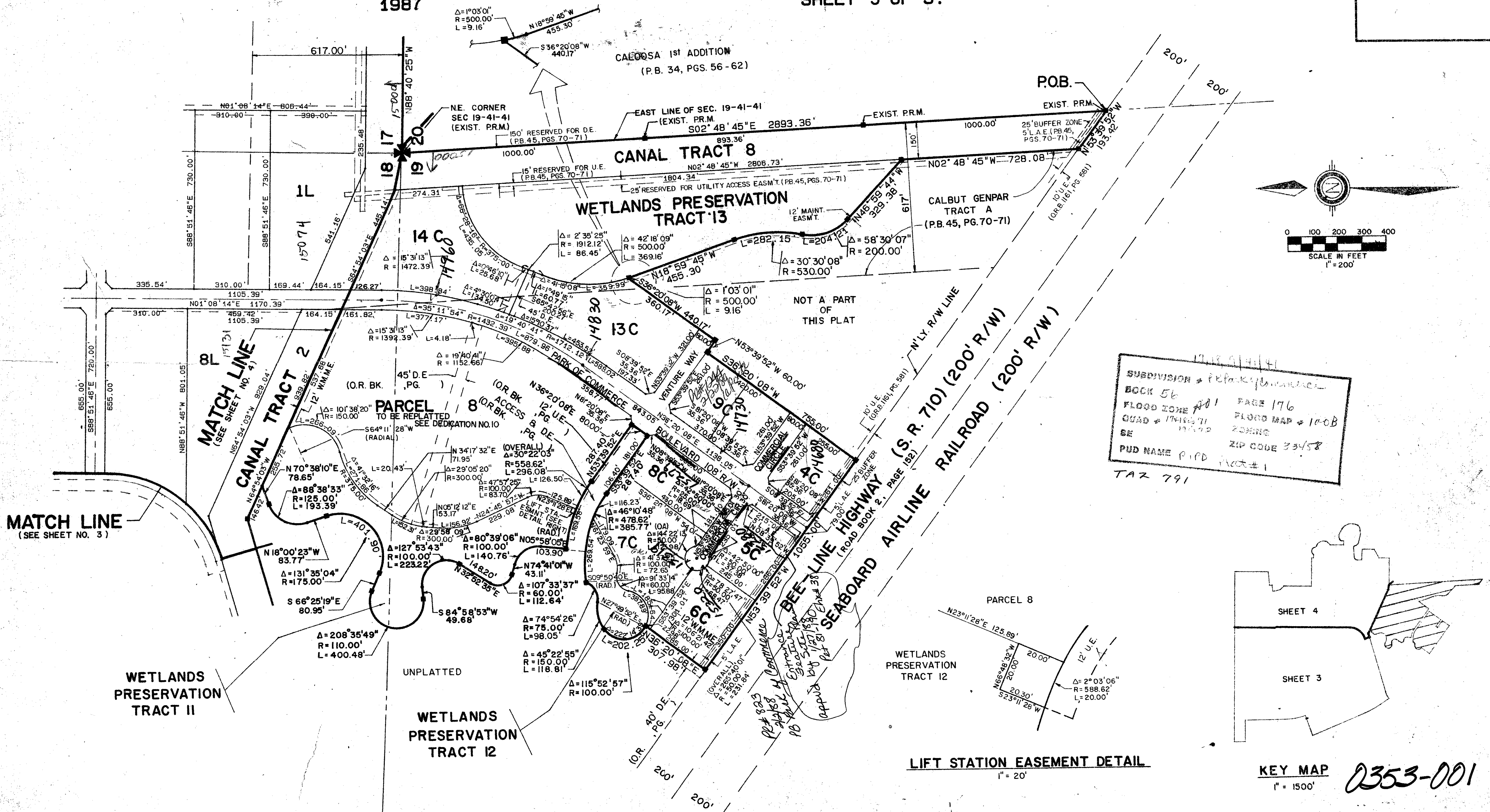
176

A PORTION OF PALM BEACH PARK OF COMMERCE, A P.I.P.D.
 SITUATE IN SECTIONS 17, 18, & 19, TWP 41S, RGE 41E, PALM BEACH CO., FLORIDA
 BEING A PARTIAL REPLAT OF A PORTION OF "CALBUT GENPAR TRACT A"
 P. B. 45, PGS. 70 & 71, OF THE PUBLIC RECORDS OF PALM BEACH COUNTY, FLORIDA

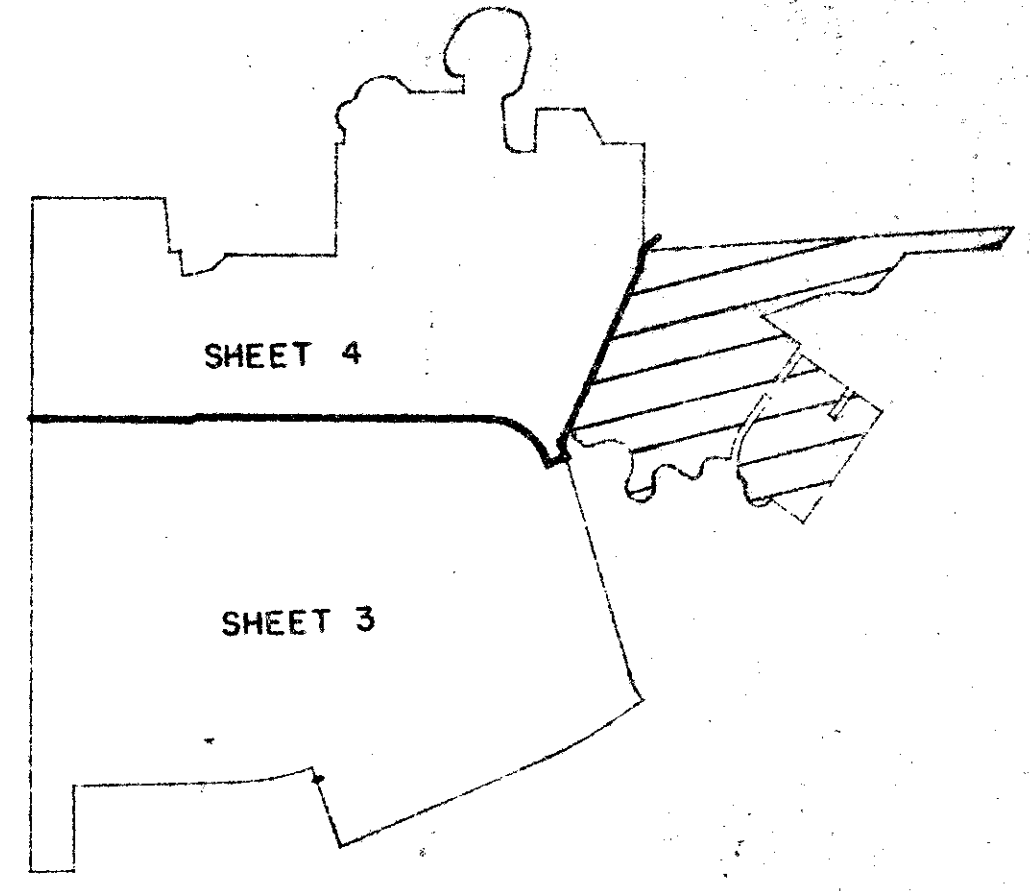
SHEET 5 OF 5.

STATE OF FLORIDA
 COUNTY OF PALM BEACH
 THIS PLAT WAS FILED FOR
 RECORD _____
 THIS _____ DAY OF _____
 AD, 1986 AND DULY RECORDED
 IN PLAT BOOK _____ ON PAGES
 _____ AND _____
 JOHN B. DUNKLE, CLERK
 BY: _____, D.C.

1987



SUBDIVISION # 1718 014141
 BOOK 56 PAGE 176
 FLOOD ZONE # 101 FLOOD MAP # 100B
 QUAD # 1741071 ZONING
 BE 1741071
 PUD NAME P.I.P.D. ZIP CODE 33458
 TAZ 791



LIFT STATION EASEMENT DETAIL
 1" = 20'

KEY MAP 0353-001
 1" = 1500'

ADD. BY [Signature]
 CHECKED BY [Signature]

Meridian Surveying and Mapping, Inc.
 2000 LOMBARD STREET WEST PALM BEACH, FL.
 DRAWN: JJR/JJK DATE: 10-23-86
 CHECKED: RAH SCALE: 1" = 200'
 DRAWING NO.: 82-071-PL 1
 PALM BEACH PARK OF COMMERCE
 PLAT NO. 1

56/176

PLAN-HOLD CORPORATION • IRVINE, CALIFORNIA
 RECORDED BY NUMBER 07548
 POSITION LOCATED BY PLAT OR SHEET LINE