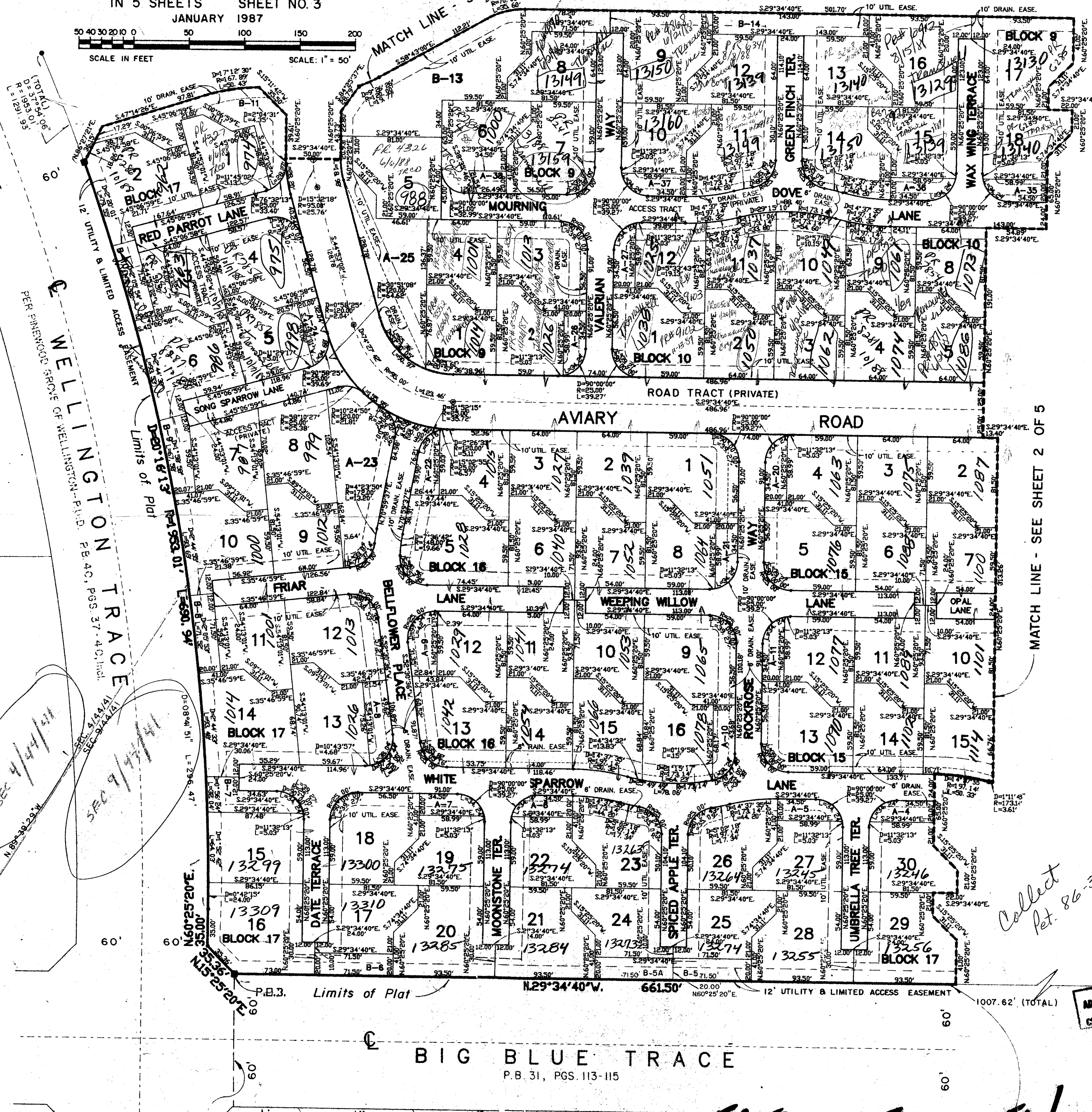
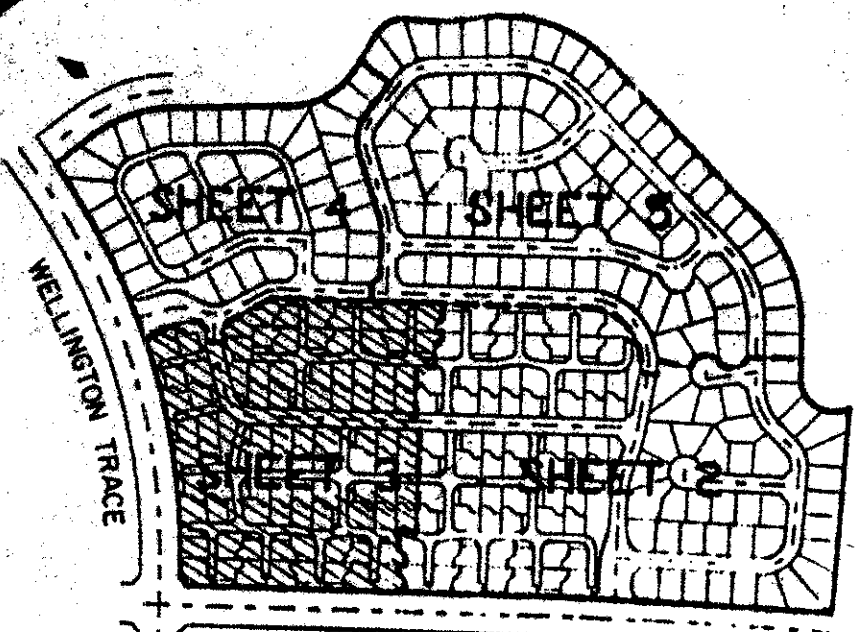
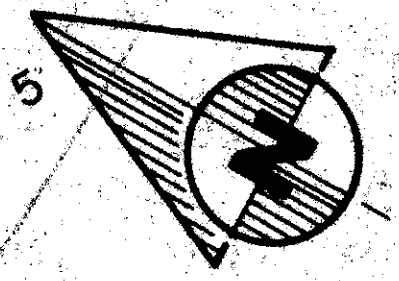
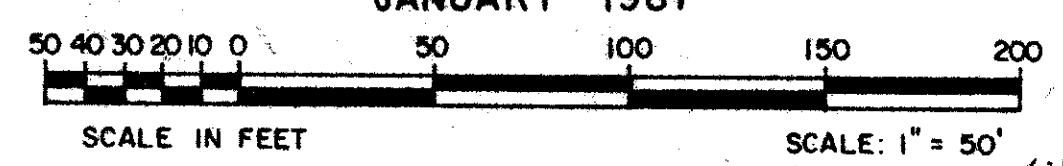


EMERALD FOREST OF WELLINGTON - P.U.D.

IN PART OF SECTIONS 3, 4, 9 AND 10, TWP. 44 S., RGE. 41 E.
PALM BEACH COUNTY, FLORIDA.
IN 5 SHEETS SHEET NO. 3

JANUARY 1987

179



349+10 14141
 SUBDIVISION Emerald Forest
 BOOK 56 PAGE 119
 FLOOD ZONE B FLOOD MAP # 1008
 QUAD # 3662 ZONING
 SE 49077
 PUD NAME of Wellington - PUD
 TAZ 727

NOTES

- DENOTES PERMANENT REFERENCE MONUMENT
- DENOTES PERMANENT CONTROL POINT

ALL BEARINGS SHOWN HEREON ARE RELATIVE TO AN ASSUMED MERIDIAN USED THROUGHOUT WELLINGTON - P.U.D. THE WEST LINE OF SECTION 10-44-41 IS ASSUMED TO BEAR NORTH 01°10'24" EAST.

BUILDING SETBACK LINES SHALL BE AS REQUIRED BY PALM BEACH COUNTY ZONING REGULATIONS.

NO BUILDINGS OR ANY KIND OF CONSTRUCTION SHALL BE PLACED ON UTILITY, DRAINAGE, OR WATER AND SEWER EASEMENTS.

NO STRUCTURES, TREES OR SHRUBS SHALL BE PLACED IN THE UTILITY AND MAINTENANCE EASEMENTS.

APPROVAL OF LANDSCAPING ON UTILITY EASEMENTS SHALL BE ONLY WITH THE APPROVAL OF ALL UTILITIES OCCUPYING SAME.

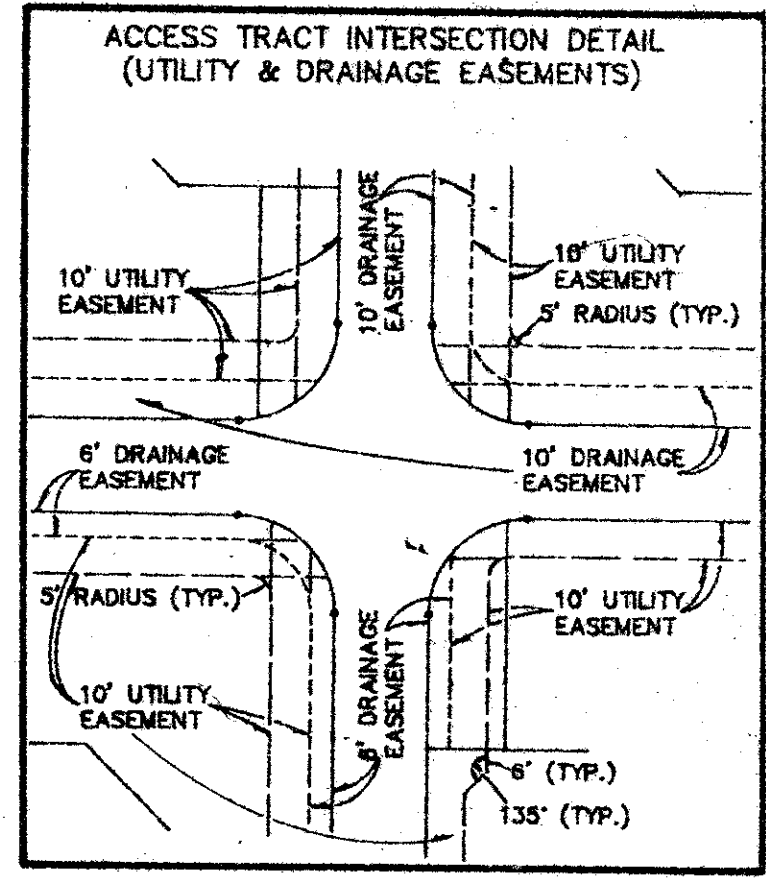
UTILITY EASEMENTS ARE FOR PUBLIC UTILITIES, WATER AND SEWER UNLESS OTHERWISE NOTED.

WHERE DRAINAGE EASEMENTS AND UTILITY EASEMENTS CROSS, DRAINAGE EASEMENTS SHALL TAKE PRECEDENCE.

PARCELS A-1 THROUGH A-37 AND B-1 THROUGH B-17 AS SHOWN HEREON ARE FOR OPEN SPACE/COMMON, DRAINAGE, UTILITY, WATER, AND SEWER PURPOSES.

PARCEL B-18 AS SHOWN HEREON IS FOR OPEN SPACE/COMMON, RECREATION, DRAINAGE, UTILITY, WATER, AND SEWER PURPOSES.

DEDICATIONS TO COUNTRY HOMES AT EMERALD FOREST HOMEOWNERS ASSOCIATION, MANOR HOMES AT EMERALD FOREST HOMEOWNERS ASSOCIATION, AND EMERALD FOREST ROAD ASSOCIATION, ARE NOT INTENDED TO CREATE ANY RIGHTS IN FAVOR OF THE GENERAL PUBLIC.



Collect
 Plat. 86-32

0332-017
 0332-017

APP. BY [Signature]
 CHECKED BY [Signature]

THIS INSTRUMENT WAS PREPARED BY:
 PAUL J. FOTORNY OF DAILEY-FOTORNY, INC.
 5050 TENTH AVENUE NORTH, SUITE B
 LAKE WORTH, FLORIDA 33463

Dailey-Fotorny, inc.
 land surveyors, planners, engineers
 5050 Tenth Avenue North, Suite B, Lake Worth, Florida 33463
 Phone 305-965-8787

SHEFFIELD WOODS - UNIT NO. 1
 OF WELLINGTON - P.U.D.
 P.B. 40, PGS. 120 & 121

CHURCH SITE NO. 5
 OF WELLINGTON
 P.U.D.

BIG BLUE TRACE
 P.B. 31, PGS. 113-115

GREENVIEW SHORES NO. 1 OF WELLINGTON - EMERALD FOREST 56/179

PLAN-HOLD CORPORATION • IRVINE, CALIFORNIA
 REORDER BY NUMBER 07548
 PLAN-HOLD CORPORATION • IRVINE, CALIFORNIA
 REORDER BY NUMBER 07548
 PLAN-HOLD CORPORATION • IRVINE, CALIFORNIA
 REORDER BY NUMBER 07548