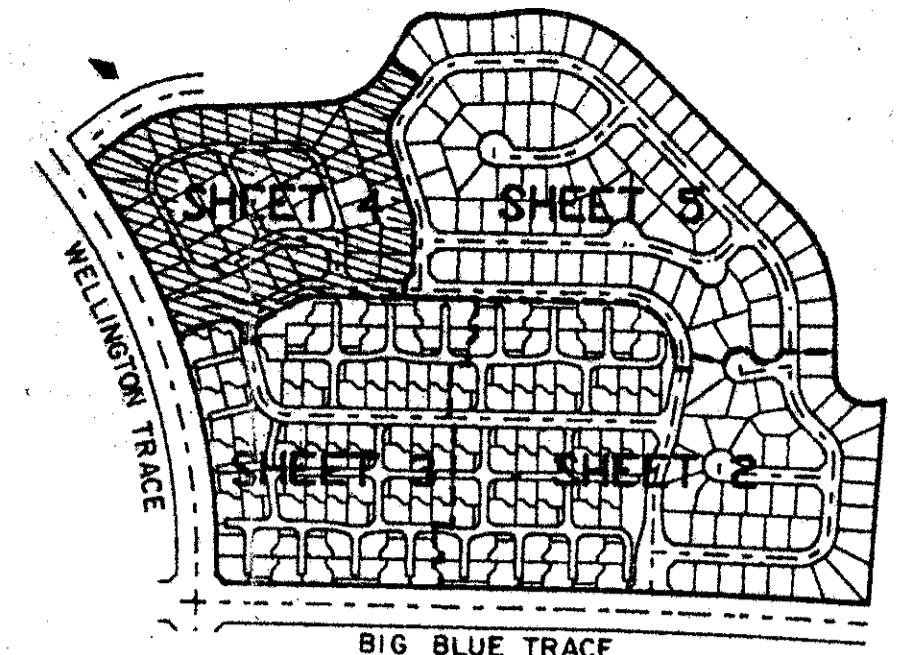
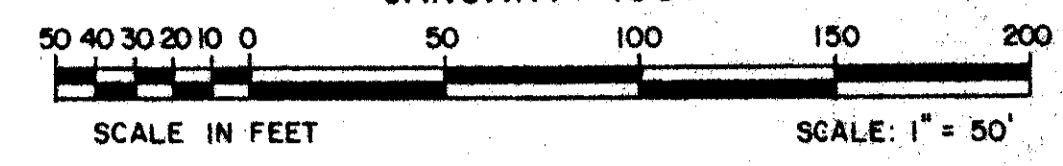


# EMERALD FOREST OF WELLINGTON - P.U.D.

IN PART OF SECTIONS 3, 4, 9 AND 10, TWP. 44 S., RGE. 41 E.  
PALM BEACH COUNTY, FLORIDA.  
IN 5 SHEETS SHEET NO. 4  
JANUARY 1987

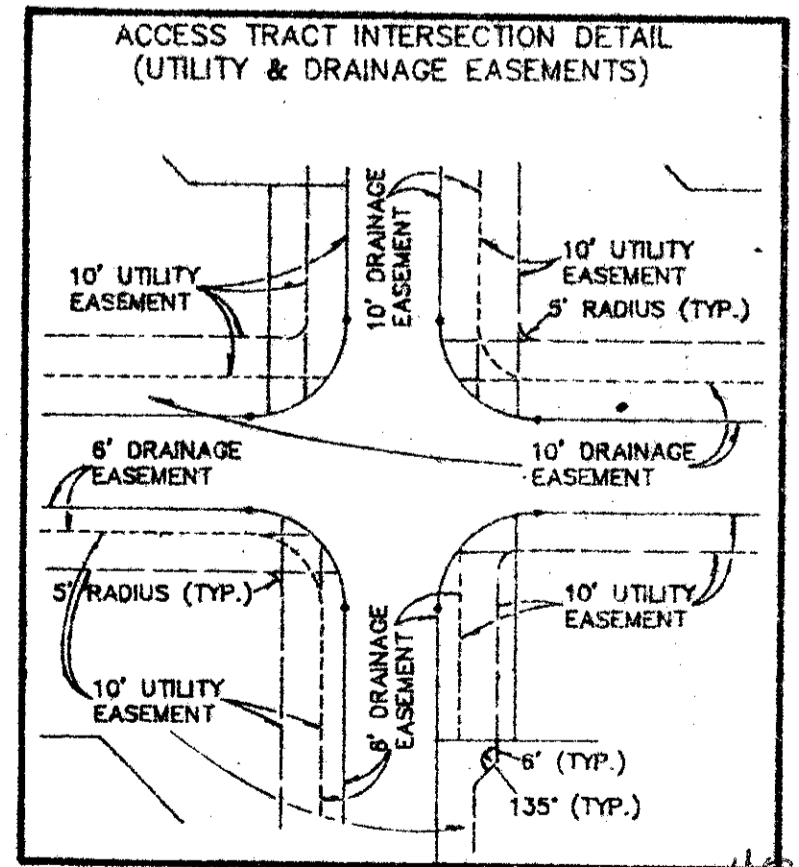


*In Wellington drawer - Patterson also on site plan*  
*Sheet 42N*

SUBDIVISION	Emerald Forest
BOOK	56
PAGE	180
FLOOD ZONE	B
QUAD	3162
SE	4-9-77
PUD NAME	Wellington PUD
TAZ	727

### NOTES

- DENOTES PERMANENT REFERENCE MONUMENT
  - DENOTES PERMANENT CONTROL POINT
- ALL BEARINGS SHOWN HEREON ARE RELATIVE TO AN ASSUMED MERIDIAN USED THROUGHOUT WELLINGTON - P.U.D. THE WEST LINE OF SECTION 10-44-41 IS ASSUMED TO BEAR NORTH 01°10'24" EAST.
- BUILDING SETBACK LINES SHALL BE AS REQUIRED BY PALM BEACH COUNTY ZONING REGULATIONS.
- NO BUILDINGS OR ANY KIND OF CONSTRUCTION SHALL BE PLACED ON UTILITY, DRAINAGE, OR WATER AND SEWER EASEMENTS.
- NO STRUCTURES, TREES OR SHRUBS SHALL BE PLACED IN THE UTILITY AND MAINTENANCE EASEMENTS.
- APPROVAL OF LANDSCAPING ON UTILITY EASEMENTS SHALL BE ONLY WITH THE APPROVAL OF ALL UTILITIES OCCUPYING SAME.
- UTILITY EASEMENTS ARE FOR PUBLIC UTILITIES, WATER AND SEWER UNLESS OTHERWISE NOTED.
- WHERE DRAINAGE EASEMENTS AND UTILITY EASEMENTS CROSS, DRAINAGE EASEMENTS SHALL TAKE PRECEDENCE.
- PARCELS A-1 THROUGH A-37 AND B-1 THROUGH B-17 AS SHOWN HEREON ARE FOR OPEN SPACE/COMMON, DRAINAGE, UTILITY, WATER, AND SEWER PURPOSES.
- PARCEL B-18 AS SHOWN HEREON IS FOR OPEN SPACE/COMMON, RECREATION, DRAINAGE, UTILITY, WATER, AND SEWER PURPOSES.
- DEDICATIONS TO COUNTRY HOMES AT EMERALD FOREST HOMEOWNERS ASSOCIATION, MANOR HOMES AT EMERALD FOREST HOMEOWNERS ASSOCIATION, AND EMERALD FOREST ROAD ASSOCIATION, ARE NOT INTENDED TO CREATE ANY RIGHTS IN FAVOR OF THE GENERAL PUBLIC.



CASA NELLA FORESTA OF WELLINGTON - P.U.D. P.B. 39, PGS. 129 & 130

SHEFFIELD WOODS OF WELLINGTON - P.U.D. P.B. 40, PGS. 120 & 121

WELLINGTON TRACE UNIT NO. 1

OLD WOODS DRIVE

## LAKE WELLINGTON

DRAINAGE EASEMENT PER O.R.B. 2452, PGS. 250-266

### QUIET WOODS ROAD

### ROAD TRACT (PRIVATE) QUIET WOODS

### EMERALD FOREST DRIVE

MATCH LINE - SEE SHEET 3 OF 5

ADD. BY [Signature]  
CHECKED BY [Signature]

*Collect 86-32*

0332-017

*Sheet 42N*  
*Ph. 1*

THIS INSTRUMENT WAS PREPARED BY:  
PAUL J. FOTORNY OF DAILEY-FOTORNY, INC.  
5050 TENTH AVENUE NORTH, SUITE B  
LAKE WORTH, FLORIDA 33463

**Dailey-Fotorny, inc.**  
land surveyors, planners, engineers

# EMERALD FOREST

56/180

*Pet 86-32*

*SEC 4/4/41*  
*SEC 9/4/41*